



Volume 32, Number 7

## *Newsletter of the Ship Model Society of New Jersey*

*July 2014*

### In This Issue

- Upcoming Events
- Treasurer's Report
- Old Business
- July Meeting
- Tech Session
- New Business
- Books & Pubs
- Show & Tell
- Useful Links
- Echo Group Build
- Quilt Shop Photos
- Meeting Photos
- Next Meeting
- Club Information

### July Notes...

Tom Ruggiero thanks all for their confidence in reelecting him as President and Ken Schuetz as Treasurer, and welcomes our new Executive Committee members, Jim Lavelle (Vice President) and Steve Maggipinto (Secretary). Tom offers a special thanks to outgoing Vice President Chuck Passaro, Secretary Larry Friedlander and Broadaxe Editor, Michael Storch. As President, he relies heavily on these team players. They bring much to the club from great tech sessions to a newsletter that has become a top notch publication. All club members owe them a great deal.

Based on recent discussions, we will be looking into 2 or more Saturday meetings over the next year. The library will have to be consulted about availability. Possible Saturday themes might be "Bring a Model" and the December auction, but all suggestions are welcome.

One thing not open for discussion is floor time at meetings for "Show & Tell" and the "Tech Session". This time will not be sacrificed for discussion of new or old business. If a member has something to bring up, please let Tom know beforehand so he can adjust the agenda accordingly. The meeting format will continue as follows: Old Business, Tech Session (so that everyone can talk with the presenter at the break), Break, New Business, Books and Pubs and Show and Tell.

The club's constitution, along with all the changes and amendments made over the years, is now available online. Here's an interesting fact from the original document: if someone wanted to be a full vs. an associate member, he would have to bring a model to be evaluated. WHOA! Obviously not so anymore. Progress is good.

Consensus among those who have attended them is that Aardvark meetings are both interesting and entertaining. Please join us, not only for technical support but also for camaraderie in a relaxed atmosphere. The next meeting is August 16th. Thanks again to Tony and Sally Alworth for the generous use of the facilities at The Aardvark.

*Continued on Page 2*

## UPCOMING EVENTS

### AUGUST

- 9 - Echo Group Build: Jim Lavelle's house
- 16 - Aardvark Workshop—10:00AM, 748 Speedwell Ave. Morris Plains
- 26 - Monthly Meeting—6:45PM, Millburn Library, 2nd Floor

### SEPTEMBER

- 20 - Aardvark Workshop—10:00AM, 748 Speedwell Ave. Morris Plains
- 23 - Monthly Meeting—6:45PM, Millburn Library, 2nd Floor
- 27 - Echo Group Build

### OCTOBER

- 16-18 - NRG Conference, St. Louis, MO
- 18 - Aardvark Workshop—10:00AM, 748 Speedwell Ave. Morris Plains
- 28 - Monthly Meeting—6:45PM, Millburn Library, 2nd Floor

In order to increase club funds, we are introducing a raffle at the monthly meeting. Larry Friedlander explained the process. At the meeting, there will be several articles gathered into groups. Each separate group will have a paper cup associated with it. Raffle tickets cost \$1 apiece, and the idea is to place one or more tickets in a cup or cups of interest. At the end of the meeting, a ticket will be drawn at random from each cup, and the holder of the winning ticket will walk away with the prize(s). This is not an auction. All the proceeds go to the club.

Be sure to check out the videos on our website. There are several available with excellent shop notes and modeling aids. Thanks to Chuck Passaro for putting these up on the site.

If you buy anything from the Brehm Estate, Ken Schuetz will be collecting the payments. Be sure to note on the check what it is for to keep our funds and the estate's separate. In Bob's memory, the Brehm family has generously offered to donate 10% of the sale proceeds to the club. All negotiations and payment arrangements will take place between individual club members and either Tom McGowan or Michael Storch.

Remember you can now fill out your Books & Pubs and Show & Tell forms prior to the meeting. [Click here](#) to access these forms. Doing this gives you more time to give us plenty of information for *The Broadaxe*. Thank you to Larry, Chuck and Jim Lavelle for their help with this.

A not so gentle reminder: dues are DUE!

## TREASURER'S REPORT

Ken was absent at the last meeting, so this is actually the June report.

This is a busy time of the year. Ken is currently collecting dues for 2014/2015 and settling recent invoices. Income this reporting period consisted of donations for refreshments as well as collection of dues. Outflows included:

- Payment for door prizes and plaque engraving for the Joint Clubs Meeting
- Refreshment purchases.



## OLD BUSINESS



Barry Rudd is in the process of identifying those members who have not been regularly attending meetings. Once this is done, he will divide the names up and ask active members to call the absentees and invite them to return.

Jim Lavelle is currently working on a 1/44 scale model of [\*USS Gunnel\*](#) (SS-253) which was his father's boat in WWII. It is a Gato class boat. Jim is building it as it looked during its early war patrols in the Pacific. *Gunnel* went out of commission as soon as she got back to the States after the war, and spent many years in the Hudson River fleet. She was scrapped in 1959.

Jim also brought a petition to save [\*USS Ling\*](#), a Balao-class submarine in WWII configuration (i.e., no [\*GUPPY\*](#) class modernization). *Ling* is still afloat, although barely. The group that owns the property where she sits on the Hackensack River is trying to get rid of her. Jim brought the "save the sub" petition for members to sign at the break if they were so inclined. Tom Ruggiero suggested that members might want to consider a club trip to *Ling*.

## JULY 22 MEETING

The meeting was called to order at 1845. There were 22 members and 2 guests in attendance. For the second month in a row, seats were arranged in a semi-circle so that all might see as well as hear the speaker. Thanks to Larry Friedlander for this idea; looks like you've started something, Larry! The meeting adjourned at 2045.

## TECH SESSION

Barry Rudd gave a presentation on gold leafing. This ancient technique (around since the 12th century) doesn't have a lot of applications in ship modeling, but it can be used for enhancing decorative pieces such as cradles and figureheads. A couple of samples Barry brought proved that genuine leafing is more convincing than simulation with gold paint.

Gold leafing is very easy, and there are many kits available to help with the process. Barry obtained a reasonably priced kit at Michaels (\$10), with everything needed to complete a project – sheets of gold leaf, base coat, adhesive, antiquing glaze and sealer. Components can be purchased individually as well.



The sheets that come with the kit are very thin and delicate. The Michael's kit does not contain real gold, but 23k gold is available in sheet form (10 sheets for around \$85). Barry believes the "fake" gold is a perfectly acceptable match to the 23k variety. It is also more durable.

If you are leafing over wood, the wood first has to be sealed and sanded with 400-grit sandpaper. A base coat

## TECH SESSION



is applied next, and then the adhesive. Since the leaf is so thin, it's important that the adhesive be applied smoothly and evenly. After about 30-60 minutes, the adhesive becomes tacky. Once this happens, the gold leaf can be applied and pressed into place. Barry does this using his fingers and a makeup brush he "borrowed" from his wife. Thanks to minimal thickness of the sheets, "open spaces" are easily patched. For leafing irregularly shaped objects, Barry crumbles the leaf into tiny pieces which he allows to fall

on the object. He then follows up with the brush. Remnants can be put in an empty jar – they won't go bad. To stop the leafed object from tarnishing, simply apply a sealer with a brush. If you want to dull the object a bit, an antiquing glaze will do the job.

One thing to remember is that whatever texture your object has will show through the gold leaf exactly as is. This is because the leaf is so thin. Surface preparation is therefore critical.

## NEW BUSINESS



Michael Storch resurrected an old proposal to bring the club into the "not-so-young-anymore" 21st century. It's called Keurig, or K-cup for short. In case any members do not go grocery shopping, "K" has nearly taken over the coffee aisles. Bagged coffee might become something of a dinosaur in another few years (but of course we all know that's a big Commie conspiracy, like doing away with incandescent bulbs). Anyway, Michael offered to look into pricing, but the overwhelming majority agreed he should just go out and buy a Keurig. Then we'll all be able to bring in our favorite flavor/decaf/half caf/tea/hot chocolate/whatever and not have to deal with instant anymore. Great idea. Thank you Michael.

Jeff Fugelstad has 25 kits he wants to part with. He doesn't want to bring them to the auction. Tom Ruggiero passed around a list of the kits and

advised those present they should get directly in touch with Jeff if interested in purchasing one. Chuck Passaro will send a broadcast email with a list of the items for sale. Examples include the [Scientific Robert E. Lee](#), a [Dumas PT109](#), [Model Shipways Sultana](#), several Model Shipways kits and many others.

On the horizon is Admiralty Workshop #2. This will be geared to sail making in both furled and unfurled configurations. Per Jim Lavelle, we will need a minimum of 10 people, a maximum of 12 to schedule the event. We are already close to that number. The cost is \$275: \$100 up front, \$175 due the day the workshop starts. Once again, it will be held at Tom Ruggiero's house sometime in the Fall, or perhaps next Spring. Dates still need to be negotiated with the presenters. If interested, contact Jim. Once details are finalized, he will ask Chuck Passaro to send a broadcast email so everyone gets notification at the same time.

Richard LaRue has suggested that all members carry SMSNJ business cards, in case we run into someone who is interested in joining or finding out more about our club. These can be purchased inexpensively from Vistaprint in quantities that will last us into the 22nd century. Rich has agreed to come up with a design for the card. Thank you, Rich.

Larry Friedlander has been contacted by Ed Marrie's widow (see the June 2014 *Broadaxe*). At



## NEW BUSINESS



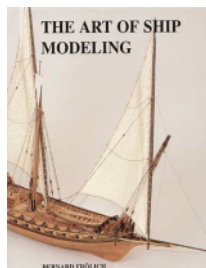
such time as she is ready, Larry has agreed to head a delegation to the Marrie household to inventory and dispose of Ed's models and modeling equipment and supplies. Since many of us

are "Men of a Certain Age", Tom Ruggiero has suggested it might be a good idea for all of us to start cataloguing our "stuff" and letting people know what we want done with it when it is no longer of any use to us.

## BOOKS AND PUBS

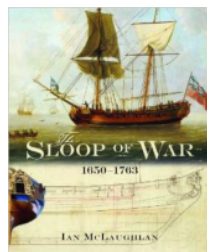


Jim Jacobs arrived at the meeting with several [Model Boats](#) magazines for loan.



Jason Clark brought 2 books to the meeting. *The Art of Ship Modeling* by Bernard Frolich, an [A.N.C.R.E.](#) hardcover, is a collection of techniques used by one of the world's great ship modelers. In this book, the author takes the reader through the process

of a complete scratch build in both Plank-on-Frame (POF) and Plank-on-Bulkhead (POB) systems. The techniques are described using 6 different models, all French.



Jason's second book, *The Sloop of War: 1650-1763* by Ian McLaughlan, was just released a month ago. The author's original intent was to offer a complete history of the unrated Naval vessel from 1650 – 1950 in a single publication. However, the

author soon realized the project needed to be broken down into 3 volumes. This is the first. The book is incredibly well researched and illustrated, using material from the [London Science Museum](#), the [National Maritime Museum](#) (NMM),

Jean Boudriot, and others. Included are original drawings by the author. The book contains considerably more illustrations than tables.



Speaking of Tables, for those who are into such things, Jim Lavelle showed a copy of *Scantlings of Royal Navy Ships*, a book by club member

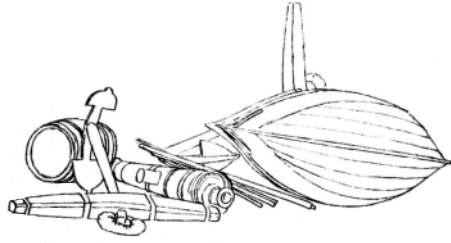
Alan Yedlinsky. This is a true labor of love, as there are literally thousands of entries including Establishments, Ship Builders Repository and Steel's Elements and Practice. The book costs \$45 and can be purchased through [Sea Watch](#).

This specially formatted book (14"x 8½") is divided into 2 sections. The first shows all of the scantlings from the 1719, 1745 and 1750 amended figures in an easy to use spread sheet format.

The second section compares Steel and Ship Builders Repository in the same format. Additionally, the author provides notes and comments for each section.

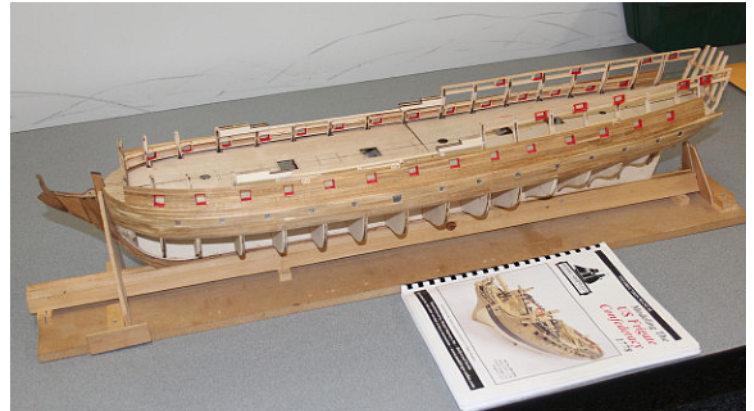
The work is presented in a lay flat binding so that when opened, 28" of information is in front of the reader. The book is a basic research tool for anyone building or studying 18th and early 19th century Royal Navy warships.

## SHOW AND TELL



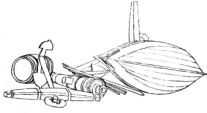
Don Otis brought in his model of [USS Confederacy](#), a kit created by our very own Chuck Passaro for Model Shipways. It comes with a book that is 158 pages long, and no, there are no Cliff Notes available. Don's sage advice to the prospective builder: "Read the book and do as you are told!" He is using an old Billings Boats stand he had in his inventory to support the model as he works on it. It is perfect for a larger kit, and will securely cradle the model in both upright and upside down positions. Nearly all the parts are laser cut, but Don did have some line-up problems with the

second part of the keel and had to make some adjustments. One thing Don learned from Chuck was to stain the planking first to avoid glue seepage problems at a later stage in the build. With prior staining, any seepage can be easily wiped off with a wet rag; it will not leave a mark where the planks come together. Don also mentioned that he will have to fine-tune the planking around the gun ports. Overall, he had high praise for the kit, which is still under construction. *Confederacy* was a frigate built in 1778. Construction is full-hull plank-on-bulkhead. Scale is  $5/32"=1'$ .



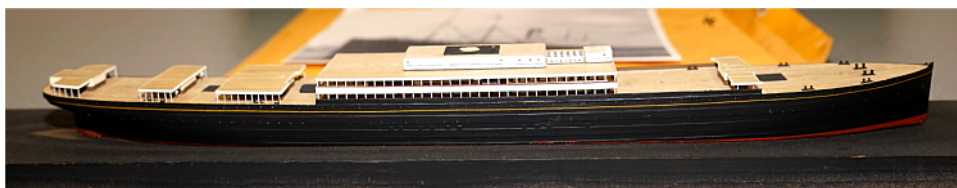
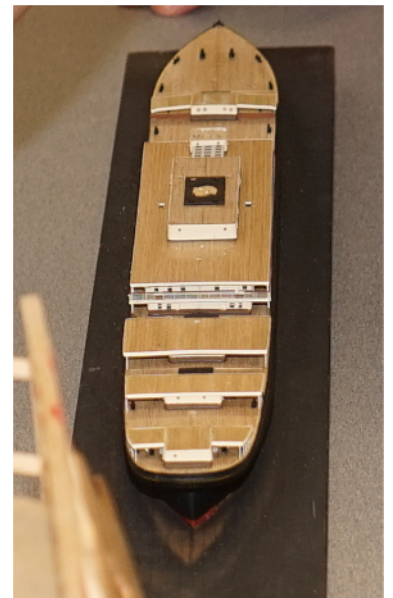
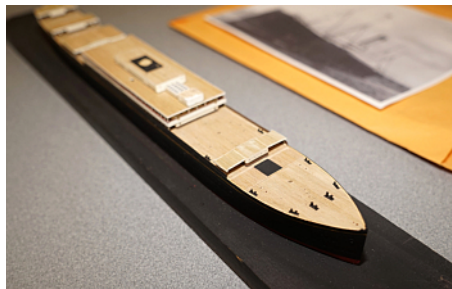
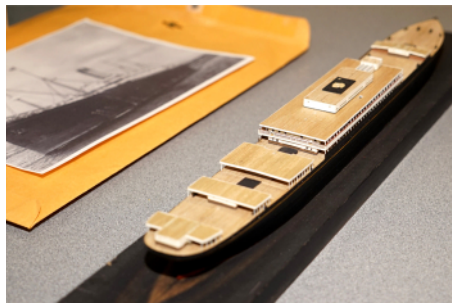


## SHOW AND TELL



Up next was a member we thought we had lost to the call of the Rockies. Back from an extended family visit in Colorado, Bob Fivehouse showed one of his signature small scalers, the White Star Liner *Republic* in 1/384th scale. Bob individually planked the deck of his model with wood he sourced from the “tiny tiny trees I grew”. Although the project is progressing well, he had to draw his own plans, mostly from photos. He found that the only commercially available drawings were the rigging plans from the shipyard. He brought in a couple of 24' lifeboats safely encased in a miniature plastic box. Made from balsa, these were passed around. Bob showed a fine example of the funnel he made from brass, with 2 paper rings called funnel irons at the top. He explained that the base of the funnel will be painted classic buff, a controversial hue with multiple interpretations among modelers worldwide. Bob mentioned that just when he became comfortable with his version of buff,

the railroad colors he used to create it were discontinued. “Ain’t that the way it goes...” Looks like Bob will have to switch from his treasured lacquers to acrylics. *Republic* was built in 1903 by Harland and Wolff as the *Columbus* for the Dominion Line. After 3 voyages, she was transferred to the White Star Line for their Mediterranean service. On January 23, 1909, she was sunk in a collision with SS *Florida* in heavy fog just off the Nantucket Lightship (same area as the *Andrea Doria* sinking). This incident was the first time a radio was used to call for help. It worked. There were 4 fatalities due to the collision, but 2,000 others survived when several liners came to the rescue. Bob believes this success might have led to overconfidence in the new technology and the subsequent reduction in lifeboat capacity that doomed *Titanic* passengers. The model’s hull is basswood and the decks are holly. Construction is Modified Scratch and the hull is Solid Bread and Butter.



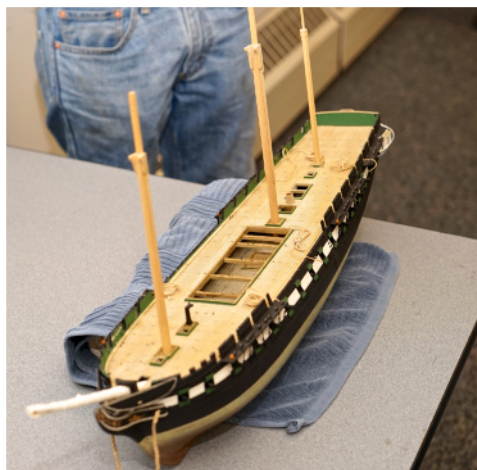
## SHOW AND TELL



Roy Goroski demo'd a 1/8 scale Revell model of the [\*USS Constitution\*](#). It's one that a neighbor had asked Roy to rig for his son. When Roy got it, it had barely been touched. The hull was shiny black, the hull halves did not mate properly and the deck had gloss paint with potholes from misapplied glue. Roy took it all down, saving as many of the parts as he could. He weathered the hull and replaced the plastic deck with a wooden one that he will weather as well. He split the gun ports to

portray the 1812 vs. the 1797 configuration. Roy plans to complete the model with wooden masts and spars. He is adding metal deadeyes and wooden blocks made from basswood.

As an aside, Tom Ruggiero mentioned that this is the last summer one can board *Constitution* until 2018, as she is going into drydock for a refit. "Things wear out." *Constitution* was originally built in 1797 at the Charlestown Navy Yard in Boston. She is the oldest commissioned warship afloat in the world.

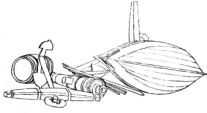


Next on deck was Noah Clark, Jason's son. His model was a pond sailer, a schooner that he had assembled with his Dad. Noah indicated he had enjoyed the build. Dad mentioned that Noah has been involved in virtually every aspect of the project, from nailing the keel, to painting, to positioning the deck houses. Jason and family are moving to Pittsburgh soon. Tom Ruggiero reminded him that we do have non-resident members and we are hoping he will continue with us.





## SHOW AND TELL



Chuck Passaro is in the process of building [\*HMS Winchelsea\*](#) (circa 1764). The project has been in mothballs for a few months, but Chuck is now getting back into it. Lately he's been working on the quarter galleries and the stern. As you may know, quarter galleries are a real challenge to put together and shape properly – Chuck is currently working on his second version of these. In 1764, quarter galleries had a nice curve to them; shortly after that, they turned straight. That's what makes this model

so appealing to Chuck. A couple of things of note: the roof was formed by shaping a block of boxwood and cutting individual tiles to shingle it. These tiles were placed just as you would shingle a roof, from the bottom up. The master, from which individual shingles were cut, took 6 hours to shape correctly.

The other item of note is the intricate moldings in the kit. Techniques for working with these have been covered in previous tech sessions.



## USEFUL LINKS

[Ship Model Society of New Jersey website](#)  
[Example of website resources](#)  
[Past issues of The Broadaxe](#)  
[Links to resources and other clubs' newsletters](#)  
[Club lending library](#)  
[Model Ship World](#)

## ECHO GROUP BUILD



The Pinnacle Group Build is winding down and the club is looking for a new group project. After considering a couple of choices ([HMS Cheerful](#) – a cutter, and [HMS Echo](#) – a sloop), the decision was made to go with a cross section of *Echo* with no masts. Tom Ruggiero brought in a timbering set; Jim Lavelle brought work he has already started on the project plus a building log. There is a good deal of online support for modelers taking on this project – recent updates from Admiralty and others on Model Ship World already building the kit. Tom advises that timbering kits from [HobbyMill](#) be used to eliminate a lot of cutting and shaping. Parts from

these kits are already dimensioned. Bulk orders with individual labeling are available. Plans for the *Echo* come on a CD in PDF format. They can be printed out and are already to scale – no adjustment is required. To ensure correct scale, it's important that they be printed “Actual Size” (no scaling), not set to “Fit”, “Shrink oversized pages” or “Custom Scale”. Builders are advised to double check their print settings to make sure they are configured correctly before running copies off.

The next group build will be at Jim Lavelle's house on August 9th.

## CANDIDS - QUILT SHOP

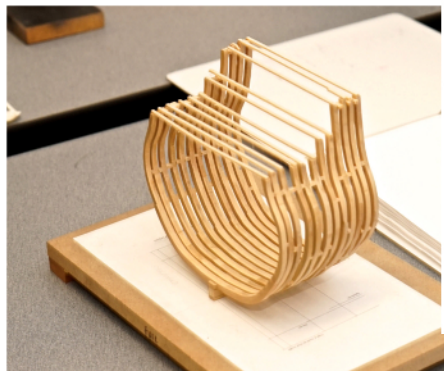
July 19, 2014





## CANDIDS - JULY MEETING

*July 22, 2014*



Our next club meeting is **August 26 at 6:45.**

### MILLBURN PUBLIC LIBRARY

We encourage you to bring in your models (finished or works in progress) and/or any kits (regardless of the stage of construction) that you have questions about or that might generate discussion from the membership.

Take advantage of the collective wisdom of the club.

Please note that the Executive Committee will start the business meeting at 6:45 "so that we can get to the fun stuff more quickly."



# The Ship Model Society of New Jersey

*The Broadaxe* is published monthly by The Ship Model Society of New Jersey (SMSNJ), a nonprofit organization dedicated to teaching and promoting ship modeling and maritime history. Membership dues are \$25.00 for the first year and \$20.00 per year thereafter.

Visit our Web Site at:  
<http://www.shipmodelsocietyofnewjersey.org> where a web version of *The Broadaxe* can be found. *The Broadaxe* is distributed by both US mail and email in PDF format.

Regular meetings are held on the fourth Tuesday of every month at 6:45 PM, at the Millburn Free Public Library, 200 Glen Avenue, Millburn, New Jersey. Guests are always welcome.

Contributions to *The Broadaxe* are always welcome, and SMSNJ members are encouraged to participate. Articles, shop hints and news items may be submitted directly to the Editor as typed manuscript or electronic files, either on discs or by email. Handwritten notes or other materials will be considered depending on the amount of editing and preparation involved.

*The Broadaxe* is written and edited by Steve Maggipinto, and distributed by Chuck Passaro and Ollie Ericksen.

Your ideas and suggestions are always welcome. Please submit them to Steve Maggipinto.

If any member would like an email copy of the roster please drop a note to Steve Maggipinto at the email address listed below. If there is an error on the roster let Steve know and the roster will be amended. Please make sure that your spam filter is not blocking emails from Chuck Passaro because if it is, you won't get *The Broadaxe* and member bulletins. You can eliminate the filtering by adding Chuck Passaro's email address to your contact list. Please keep the secretary informed of any changes so that the roster can be kept current. If you would like a printed copy of the roster please send a SASE to Steve Maggipinto at the address below and one will be mailed to you. Rosters are also available at the monthly meetings.

Please keep your contact information up to date. Your email address is particularly important because that is the main avenue of communication for club announcements. In case of emergencies such as last-minute cancellations due to weather, emails will be sent to the members.

---

Direct All Correspondence To:

Steve Maggipinto  
328 Sand Shore Rd., Budd Lake, NJ 07828  
(973) 945-4509  
E-mail: [stevemagg@optonline.net](mailto:stevemagg@optonline.net)

---

## Club Officers

### PRESIDENT:

Tom Ruggiero  
54 Peach Orchard Dr, East Brunswick, NJ 08816  
(732) 257-6063  
Email: [Ruggierotp@aol.com](mailto:Ruggierotp@aol.com), [Trugs@comcast.net](mailto:Trugs@comcast.net)

### VICE PRESIDENT:

Jim Lavelle  
11 Red Twig Trail, Bloomingdale, NJ 07403  
(973) 492-9407  
E-mail: [Jim@JMLavelle.com](mailto:Jim@JMLavelle.com)

### TREASURER:

Ken Schuetz  
34 Oak Drive, Roseland, NJ 07068  
(973) 226-9004  
E-mail: [knschuetz@verizon.net](mailto:knschuetz@verizon.net)

### SECRETARY:

Steve Maggipinto  
328 Sand Shore Rd., Budd Lake, NJ 07828  
(973) 945-4509  
E-mail: [stevemagg@optonline.net](mailto:stevemagg@optonline.net)

### WEBMASTER:

Chuck Passaro  
E-mail: [cpassaro@verizon.net](mailto:cpassaro@verizon.net)