

THE BROADAXE



NEWSLETTER
of

THE SHIP MODEL SOCIETY OF NORTHERN NEW JERSEY

Founded in 1981

Volume 21, Number 9

September 2003

Minutes of Meeting August 26, 2003

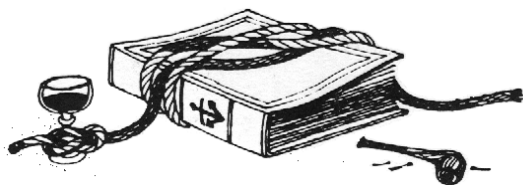
President Hegstetter called the meeting to order at 7:30 PM. There were 32 members attending. Guest **Richard Westerfield** was attending his second meeting.

The scheduled September meeting at Micro Mark regrettably must be postponed until our October 28 meeting, so **Ed** suggested we move the usual October "Bring a Model Night" to September. Everyone was in agreement, so we will proceed accordingly.

Stan Sinowitz volunteered to see to the distribution of the new membership roster to members who have not received a copy at a meeting.

Vice President Barry Rudd received an e-mail from a gent in Lodi, NJ who asked if any member might be interested in completing a Minicraft Titanic model for the man's son. Anyone interested should talk to **Barry**.

President Ed asked for someone to bring **Abe Taubman** to our meetings. **Tom McGowan** agreed to try to find someone.



BOOKS AND PUBLICATIONS

Barry Rudd showed "The Art of Ship Modelling" by Bernard Frolich and published by A.N.C.R.E. & Co. and PIER BOOKS. This is an attractively presented volume describing the scratch building of seven

models based on the monographs of Jean Boudroit.

Dave Watkins showed The Smithsonian, National Museum of American History ship plan lists. There are three publications;

1. The Ship Plan List (American merchant ships and small craft)
2. The Smithsonian Collection of Warship Plans (Early American sailing warships)
3. The Maritime Administration Collection of Ship Plans

Each publication is \$10.00(or used to be) and can be ordered from:

Ship Plans
Smithsonian Institution
PO Box 37012
NMAH 5004/ MRC 628
Washington, D.C. 20013-7012

Dave also passed around a book on the Maine Maritime Museum that he visited recently.

Jeff Fugelstad continued his discussion from last month about PT boats in the South Pacific in World War II. He discussed a book by Buckley (I didn't get the title) on the subject. The book included a letter from **Jeff's** friend Joe Burke telling of his experiences.

Henry Schaeffer showed a copy of "Steamboat Bill" magazine with a picture of the **Queen Mary II** at her launching.

Most members have seen **Ozzie Thalmann's** impressive models of the **Bismarck** and the **Hood**. His fame is spreading. He mentioned that a gentleman from Minnesota, Ernie Thompson, visited him. He wished to see and photograph the **Ozzie's** models.

TECHNICAL SESSION

Our speaker for the meeting was **Dave Shadell** from Toms River. **Dave** is an expert on the camouflage schemes utilized on American warships primarily during WWII. In addition to a vast collection of photographs, **Dave** also has a collection of some 2,000 vessel models exhibiting the color schemes used on individual vessels. In 1941 the Navy created an elaborate system of camouflage, using different colors and patterns. The particular colors / patterns were known as measures of which there were about 33 in all. **Dave** showed many models and photos depicting the exact measures employed for different ships and the reasoning behind the measures, which apparently were not as successful as the Navy wished.

Dave clearly knows what he is talking about and anyone building a model of that era is well advised to communicate with him to get the straight scoop on what the ship, in fact, looked like.

Overall, it was a fascinating presentation on a rather obscure subject.

SHOW AND TELL

Don Otis brought his completed scratch built model of the **Herzogin Cecile** which we have seen on several occasions over the past 18 months as work on this fine model progressed. The four masted barque was built in 1902 as a cadet ship and **Don** has depicted it as it appeared prior to the maiden voyage in June 1902. Any part of the original vessel done in teak has been represented in teak on the model. **Don** used plans drawn by Harold Underhill and various books about the ship.

Henry Barbrack showed his work in progress of the **CSS Alabama** from the Mamoli kit. **Henry** has finished work on the hull and can now turn to deck furniture etc. and the masting and rigging. We anxiously await the finished product.

Francois Lachlelier displayed his completed model of the 1935 French trawler **St. Elme** from the Soclaine kit. Although **Francois** has done an excellent job in building the model, he was not very complimentary about the plans, the quality of the wood provided and the general rigging arrangement of the boat since it was part trawler and part lobster boat. To quote **Francois**, "The

most I can say is that building this model was a constant challenge".

Jeff Herne showed another of his superbly built resin models. This one the German Type 21 U-boat from a Revell Germany kit. According the **Jeff**, because of its design, the Type 21 was the first true submersible warship. It was capable of 17 knots while running submerged.

Ozzie Thalman showed old Scientific Model Co. kits of **Thermopylae**, **Cutty Sark** and a Spanish Galleon in their original boxes. Each box features a picture of the completed model. These pictures were taken of the model prototypes that **Ozzie** constructed prior to the release of the kits. **Ozzie** did this work for Scientific Model in the early seventies.



FROM THE EDITOR

Unfortunately, this is another abbreviated version of the **Broadaxe**. Just as I was getting ready to prepare this month's edition, the hard disk on my computer failed completely with the loss of the photographs from the August meeting that **Stan Sinowitz** had sent me a few days before. On the plus side, I had backed up my SMSNNJ files after producing the August edition of the **Broadaxe**, so I had all of the files that I had saved to my hard disk up to that time. As the saying goes, you live by the computer, you die by the computer.

A show of hands at the August meeting indicated that several people plan to attend the Nautical Research Guild conference in Chicago in October. From what I have read, it is shaping up to be a very good meeting. We look forward to a report from our members who attend.

Last month I enclosed a note to several members whose e-mail addresses are incorrect in the club records asking that they send me their current e-mail addresses. Thanks to those that did, but I must ask you to send them again, because I lost the new addresses when the disk crashed.

Mark Your Calendar

October 9-12, 2003 30th Annual Nautical Research Guild Conference Chicago, Illinois. <http://www.naut-res-guild.org/services/confer.html>

The '**BROADAXE**' is published monthly by The Ship Model Society of Northern New Jersey, a nonprofit organization dedicated to teaching and promoting ship modeling and maritime history. Membership dues are \$20.00 for the first year and \$15.00 per year thereafter.

Visit our Web Site at:

<http://www.njshipmodelsociety.org>

where an Web version of the **BROADAXE** can be found. The **BROADAXE** is distributed by both US mail and e-mail in PDF format.

Regular meetings are held on the fourth Tuesday of every month at 7:30 P.M., at the Millburn Free

Public Library, 200 Glen Avenue, Millburn, New Jersey.

Guests are always welcome.

Contributions to the **BROADAXE** are always welcome, and SMSNNJ members are encouraged to participate. Articles, shop hints and news items may be submitted directly to The Editor as typed manuscript or electronic files, either on discs or by e-mail. Handwritten notes or other materials will be considered depending on the amount of editing and preparation involved.

Direct All Correspondence To:

BROADAXE EDITOR

David C. Watkins, 4 Knollwood Ave, Madison, NJ 07940

E-mail: david.watkins19@verizon.net

OFFICERS

PRESIDENT:

Ed Hegstetter, 79 Cypress Point Lane, Jackson, NJ 08527

(732) 928-1140 E-mail: jeheg14@optonline.net

VICE PRESIDENT:

Barry Rudd, 1600 Well Drive, Fair Lawn, NJ 07410

(201) 791-1431 E-mail: metrolimo@aol.com

TREASURER:

Jeffrey Fugelstad, 73 Rensselaer Road, Essex Fells, NJ 07021

(973) 228-3230 E-mail: boatworks1@att.net

SECRETARY:

Thomas McGowan, 36 Clover Hill Lane, Colts Neck, NJ 07722

(732) 946-8322 E-mail: jmcgcla@aol.com

WEBMASTER:

Dave Watkins, E-mail: david.watkins19@verizon.net

THE BROADAXE

NEWSLETTER

of

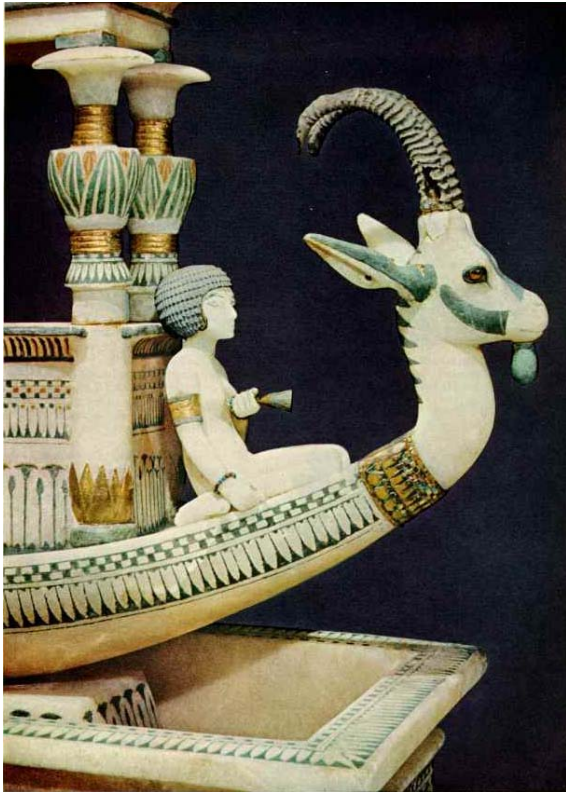
THE SHIP MODEL SOCIETY OF NORTHERN NEW JERSEY

Founded in 1981

Volume 21, Number 9

September 2003

Newsletter Editor:
David Watkins
4 Knollwood Ave.
Madison, NJ 07940



NEXT MEETING:

September 23, 2003

7:30 PM

**MILLBURN PUBLIC
LIBRARY**

**Bring a Model
Night**