



THE BROADAXE

NEWSLETTER
of
THE SHIP MODEL SOCIETY OF NEW JERSEY
Founded in 1981



Volume 26, Number 6

June, 2008

MINUTES OF THE REGULAR MEETING May 27, 2008

The meeting was called to order by Vice President **Ed Hegstetter** at 7:35 PM with 28 regular members and 1 guest in attendance, **Mike Ellison**, attending his third meeting. With a unanimous vote to accept Mike, the members heartily welcomed him to the Club!

Comments, questions and or corrections to the April issue of the Broadaxe were requested from the members. There being none, the April 2008 issue of the Broadaxe was accepted into the minutes.

Al Geigel presented his Treasurer's Report to the members. The Club continues to show a healthy bank balance thanks to the fine stewardship of our current and past treasurers. There being no comments or discussion by the members, the Treasurer's Report was accepted into the minutes.

Dan Pariser addressed the members on behalf of the NRG and expressed the NRG's thanks to the Club for their recent efforts in researching possible convention sites and tours for the 2009 NRG Conference and hopes that we might become involved in a future Conference. In light of our decision to decline to be host club for the 2009 Conference, The NRG has decided that the venue for the 2009 Conference will be in Buffalo, New York.

Tom Ruggiero was requested to place an order for Navy Blue hats with the club logo. Jeff Fuglestad said he will provide Tom with a vendor contact to have the hats made up. Tom said he will also order some additional embroidered patches with the Club logo.

An update on the East Brunswick Library display was provided by **Tom Ruggiero**. As of the meeting night, 22 of our members' models will be on display at the library for the month of June. On June 25th, Tom will be giving a presentation at the library from 7 to 9 PM where he will discuss our craft with the public and answer any questions they may have on ship modeling. All are invited to attend the discussion and hopefully several members will be there to give Tom a hand.

Henry Schaefer informed us that he was contacted by the South Amboy library and asked if he would bring his model of *RMS Titanic* to the library on June 23th as the library was hosting a discussion of *Titanic* by an author who has written 3 books on the *Titanic* and will be bringing several artifacts from *Titanic* to supplement his talk.

Our members continue to garner awards for their models. Most recent award winners were **Henry Schaefer**, 1st Place, Engine Powered Ship Division, for his model of the German Raider *Atlantis*, **Gary Kingzett**, Gold Award for his model of *USS San Francisco* (also received the Dana McCalip Best Miniatures Award), **Ozzie Thalmann**, Silver Award, for *USS Whitehall*, and **Don Otis**, 3rd Place for his model of *USCG Eagle*. Congratulations to you all!

Ed Hegstetter, speaking for the Executive Committee, proposed that regular member dues for the upcoming fiscal year be waived. The Club's current bank balance was built up over the past couple of years in anticipation of expenses that might have been incurred for the NRG Conference which are now not needed. No objections were raised by the members in attendance to have the dues for the fiscal year 2008-2009 waived for regular members.

Ed Hegstetter also mentioned a TV documentary that was produced on the *SS United States* (which is currently rusting away in Philadelphia). Of particular interest is the fact that our own **Nick Starace** served as 3rd assistant engineer on the *United States* and was interviewed for the documentary. Nick has a DVD of the program and his interview if anyone is interested in seeing it.

Members were reminded that elections for Club officers will be held at the June meeting. The current slate is **Bob Fivehouse, President, Tom McGowan, Vice President, Al Geigel, Treasurer and Mike Gutsick, Secretary**. If you wish to have your name also placed in nomination as an officer for the upcoming year, please contact **Roy Goroski** and let him know which office you are interested in.



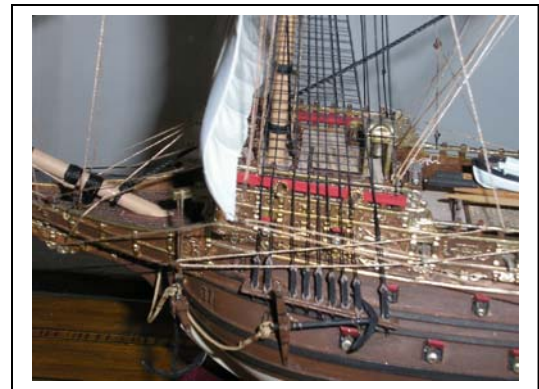
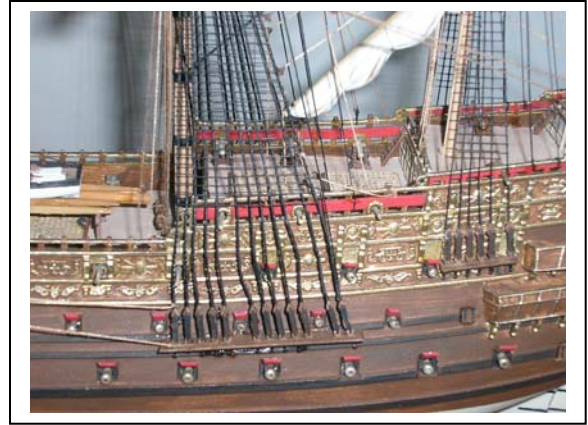
BOOKS AND PUBLICATIONS

Larry Friedlander brought in Volume 1 of William Romero's "Modeling HMS Warrior" Practicum published by Pier Books in 1998. There are currently 5 volumes of this Practicum series available. The book goes into a very detailed explanation of how to build the plank on frame model of *Warrior*, but is a "must have" publication for anyone building a model from a Hahn plan and using the Hahn method of hull construction.



SHOW AND TELL

Dan Pariser brought in the model he will have on display at the East Brunswick Library, the Airfix Classic plastic kit model of *Sovereign of the Seas* built in 1637. Dan spent quite a bit of time tensioning the rigging, particularly on the sprit sail, to make sure that the plastic masts and spars weren't bent out of line. Dan told us the rigging is the only scratch built component on the model. The scale is 1:192

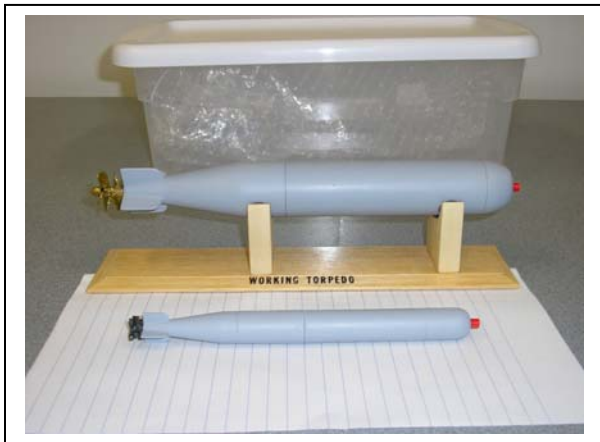


Mike Ellison is working on his second model, the plank on bulkhead schooner *Bluenose* from the Model Shipways kit. Mike had some questions on a planking problem he encountered and received some useful pointers from several of the members. Dan Pariser noted that Mike's model had the rudder post installed and Dan suggested that you should delay installing that piece until after the hull is planked. In that way you only have to cut to fit the plank at the stem post. Let the plank extend beyond the stern and trim after the planking is done.





Ozzie Thalmann delights in challenges. Someone asked him if he could make his torpedo smaller and he found a way to do that! Ozzie used a marker pen for part of the torpedo body and used a Remington nose and bead trimmer for the motor! He fabricated the propellers out of plastic and just like the larger version, they are counter rotating. Amazing!



Henry Schaefer again shows his skill in turning out a nice looking scratch built model based on a paper cutout model kit. Henry uses the paper kit to form templates to carve the solid hull and then uses the photo etch parts that come in the paper kit on his wooden model. Henry confessed that he didn't spend a lot of time on the model and was surprised that it looks as nice as it does! The model is of a German freighter called *Schwann II* and is in 1:250 scale.

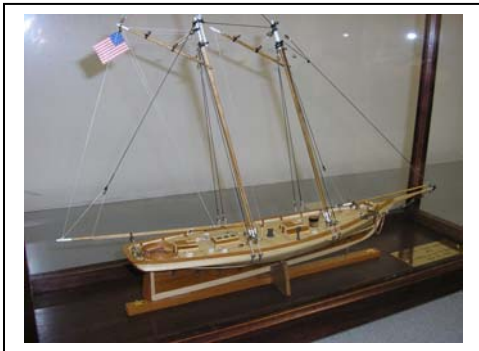


Tony Alworth showed us his model of the Model Shipways kit *Phantom*. Tony turned it into a waterline model, however. He also recounted an interesting story about why his model has an additional rope locker on the deck. It seems that Tony had placed his model in a location where the sun shone through Tony's magnifying glass, focusing directly on a spot on the deck and you guessed it, started to burn a hole in the deck! He

removed the locker to show us the sizable burn hole that remains. Ouch!

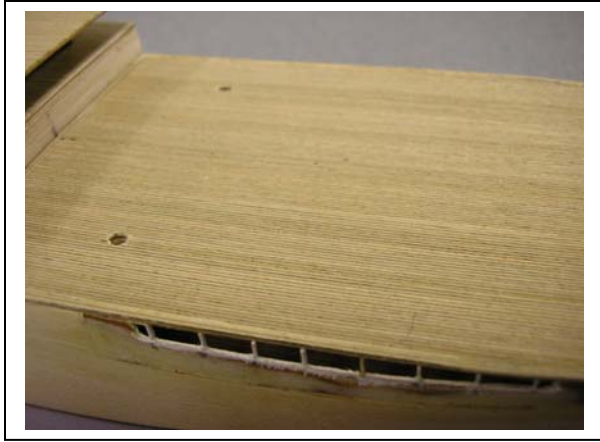


Ed Marrie brought in his completed model of *America*. This is the smaller of the *America* kits available from BlueJacket Shipcrafters at a scale of 1:96. Ed left much of the planking off to expose the mahogany ribs. Looks just like the model pictured in their catalog – nice job, Ed!



Bob Fivehouse continues to make progress on his scratch built model of *MV Britannic* built in 1930. Several decks have been permanently attached now. In one section, if you peer in very closely you can see the tiny chairs that Bob has made. In Bob's world, nothing is too small!





The decking is fabricated using the method Bob illustrated in a previous tech session which utilizes several layers of veneer laminated into a block and then ripped into thin sections. Once the sections are butted together, the effect is a deck of individually laid planks.



TECH SESSION

Tonight's Tech Session was given by **Tom McGowan**. Tom showed us what the "Hahn Method" is in a clear and informative way. He had the Harold Hahn plans for *Rattlesnake* on hand so we had an opportunity to see exactly the construction details included in a set of Hahn plans. Tom went through the steps necessary to fabricate an individual frame from the glue up of the rough strips to the cut out of the actual frame. He had his construction base which is so essential to the Hahn construction method there, explaining the reason for the aluminum foil sheet underlying the construction base (so that the base can be easily removed from the box structure and flipped to work on the inside of the hull). Tom dry fitted several completed frames to the base and to the keel to illustrate the technique involved. Tom did admit that it requires several bottles of wine to build all of the frames necessary for a true plank on frame model! The Hahn plans and lumbering kits are available from The LumberYard for Model Shipwrights (www.dlumberyard.com). The lumber kits include laser cut keels, deck beams and construction base

and enough wood to plank your model. Tom brought in his model of the Colonial Schooner *Hannah* to show what a completed hull looks like. Tom's model is made of cherry frames with apple and ebony on the bulwarks and whales. The hull is finished with two coats of sanding sealer and sanded with very fine steel wool. The end result is a stunning hull. Two books which Tom says are essential if you want to build a Hahn model are "The Colonial Schooner: 1763-1775" by Harold M. Hahn and "Modeling HMS Warrior" by William Romero (thank you, Larry Friedlander, for bringing your copy in). While the process seems daunting, Tom's discussion has de-mystified the Hahn method for many of us. Thank you for a great tech session, Tom!

The meeting adjourned at 9:50 PM



UPCOMING TECH SESSIONS

June 24, 2007 – Don Otis will be presenting sail making techniques for static models

MARK YOUR CALENDARS!
NRG 35TH ANNUAL CONFERENCE
NOVEMBER 11-16, 2008
CHATTANOOGA, TN

MODEL DISPLAY AT THE EAST BRUNSWICK LIBRARY - JUNE
TOM RUGGIERO PRESENTATION AT THE LIBRARY
JUNE 25, 2008 7 - 9 PM

SOUTH AMBOY LIBRARY
LECTURE ON TITANIC
JUNE 23, 2008

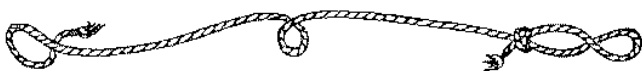
SOUTH STREET SEAPORT MODEL FESTIVAL
AUGUST 2 & 3, 2008
1 - 5 PM



FROM THE EDITOR

Perhaps some of you might have noticed me video taping the last few tech sessions. It's my intention to tape as many as I can so we can have a video library of tech sessions available for the use of our members. I currently have the last three tech sessions available which are: ***Making Eye Bolts and Turnbuckles*** by Gary Kingzett, ***Hull Planking Methods*** by Barry Rudd and Roy Goroski and the ***Hahn Method of Hull Construction*** by Tom McGowan. I look forward to adding Don Otis's presentation of sail making to our library collection. If anyone would like to view any of the sessions, please feel free to contact me and I'll have the library copy available for you at the meeting. Feel free to make a copy of the dvd for your own use but remember that this is a "lending library" type of deal and that the library copy should be returned so that others may benefit from it. With this in mind, I think a \$5.00 refundable deposit should be left with either me or the treasurer to cover the cost of the dvd should it not be returned. Other alternatives could certainly be discussed by the membership at a future meeting and I leave it up to the members to best determine how they want the dvd library to operate.

Mike Gutsick



TODAY'S SHOP TIP

The following article was provided by **Jim Caulkins** who thought it would be of interest to the members. While many of us with computers would use an alternate technique, we should remember that there are still those modelers that do not have computers who are happy doing something the "traditional" way. Thanks for the article Jim.

Technique for Applying Dry Transfer Letters to Ship Models

SOURCE OF LETTERS:

The brand most available today is MODEL GRAPHICS "Woodland Scenics". It can be obtained from hobby shops and train stores. The sets come in several colors -

generally black, white, yellow, gold. The letters, also numerals, come in a variety of sizes and fonts. A set costs somewhere around \$3.00.

Occasionally, the craft store, Michaels, has had some dry transfer letters although not much of a selection. They also carry a line of vinyl self stick letters that come in various fonts, colors and sizes. But these would be for large applications with letter sizes ranging from 1/4" to 6"!

Graphics and art supply houses formerly carried a broad array of dry transfer materials by manufacturers such as Letraset and Chartpak but no longer do because of the impact of the computer on the graphics business. (A little more on that later.)

USE OF LETTERS AND DECAL MATERIAL:

It is very difficult to apply dry transfer letters directly and individually to a model and obtain a professional result - meaning that the letters have been applied in a perfectly straight line and have equal spacing. However, a professional result can be obtained by first creating a decal of the name and then applying that decal to the model - a relatively simple process.

Some 15 years ago when I first started to work with dry transfer letters I made decals using tissue paper. (I do not believe decal paper was available at that time) The process worked well if the application was to a white or black background and I had a good grade of tissue. I would apply the letters to the tissue and when the name was complete use a clear craft spray (lacquer) to "set" the letters and prevent them from coming off when handling. By also spraying the back of the paper the tissue became transparent and I now had a nice decal to work with. I said the tissue technique worked well with white or black but not colors - even black did not always work well. The reason - the tissue had to be the same shade as the background to which it was applied otherwise, the system did not work.

Several years ago while poking around the hobby shop I came across DETAIL MASTER - clear decal paper 8.5" x 11". \$4.25 a sheet. (Sounds expensive but makes a lot of decals.) Instead of using tissue paper I now apply the letters to the decal paper and the problem of background color has been eliminated. This decal paper can also be used with a computer and laser printer. I do not have a laser printer so cannot provide an example of how that would work. One drawback I think would be the computer's spacing of the letters. Lettering by hand you can either "squeeze" the letters or stretch them out as need be? Sure would be worth a try to find out.

MATERIALS NEEDED TO CREATE THE DECAL:

Need a smooth hard surface - piece of plexiglas or window glass
Sheet of graph paper

Decal paper Carrier Sheet of Dry Transfer letters

Burnisher or dull pencil

LETTERING PROCEDURE

Tape a piece of graph paper to the glass or plexiglass. The graph paper should be wider than the carrier sheet containing the transfer letters since the lines on the graph paper will be used as a guide to keeping the lettering perfectly level. I find the graph paper very convenient and easy to work with but other lined paper will also do. However, the vertical lines on the graph paper also contribute to the correct placement of the letters to be burnished on to the decal sheet.

Cut a piece of the Decal Paper two inches or so longer than the name to be printed and allow a half inch or so above and below the lettering. Use a thin strip of masking tape to attach this piece of decal paper (shiny side up) to the surface and center of the graph paper. You are now ready to apply the letters to create the name of the model.

Position the Dry Transfer carrier sheet and the appropriate letter on the decal paper. Utilize the lines on the graph paper that show on the left and right sides of the carrier sheet so all letters will "sit" on the same line and not run up or down hill. When satisfied, hold the carrier sheet firmly in place and rub over the letter with a burnisher or dull pencil. Slowly lift the carrier sheet leaving the burnished letter on the decal paper. Repeat the process for subsequent letters. However, this is where some experience helps with respect to keeping the additional letters level and with identical spacing between them. Trial and error is a wonderful teacher and once you get the "knack" of it the result is quite satisfying.

After the name is "written" leave everything taped as is and spray with a clear gloss or flat acrylic sealer. This sets the letters so they will not come off. The craft stores market a product called "FolkArt" - Clearcote Acrylic Sealer. It comes in a non-yellowing Matte Finish and works very well. When dry, cut out the decal. I use a single edge razor blade and a straight edge. Leave about 1/16th of an inch from the letters all around.

To apply to your model place the decal in a shallow saucer of water for a minute. Once the water is absorbed the film can be gently separated from its backing. Carefully position the film on the model. I do this with tweezers and always have Q-tips and water handy. Having a moist surface on which the film is to be applied helps to position it and keep it from tearing in the process. Placing the film on the model is not always easy but it is doable. (This is another step where a little prior experience facilitates getting the job done.) Once in position, very gently use a Q-tip to pat dry the surface and remove any air bubbles. You should be very happy with the end result

The '**BROADAXE**' is published monthly by The Ship Model Society of New Jersey, a nonprofit organization dedicated to teaching and promoting ship modeling and maritime history. Membership dues are \$30.00 for the first year and \$25.00 per year thereafter

Visit our Web Site at: <http://www.njshipmodelsociety.org> where a Web version of the **BROADAXE** can be found. The **BROADAXE** is distributed by both US mail and e-mail in PDF format.

Regular meetings are held on the **FOURTH Tuesday** of every month at 7:30 P.M., at the Millburn Free Public Library, 200 Glen Avenue, Millburn, New Jersey.

Guests are always welcome.

Contributions to the **BROADAXE** are always welcome, and SMSNJ members are encouraged to participate. Articles, ship hints and news items may be submitted directly to The Editor as typed manuscript or electronic files, either on discs or by e-mail. Handwritten notes or other materials will be considered depending on the amount of editing and preparation involved.

Direct All Correspondence To:

BROADAXE EDITOR

Michael Gutsick, 34 Junard Drive, Morristown, NJ 07960
(973) 734-1648 E-mail: mikejgutsick@optonline.net

OFFICERS

PRESIDENT:

Jeffrey Fuglestad, 73 Rensselaer Road, Essex Fells, NJ 07021
(973) 228-3230 E-mail: boatworks1@worldnet.att.net

VICE PRESIDENT:

Edward Hegstetter, 79 Cyprus Point Lane, Jackson, NJ 08527
(732) 928-1140 E-mail: jeheg14@optonline.net

TREASURER:

Al Geigel, 237 Maple Avenue, Dunellen, NJ 08812
(732) 968-5969 E-mail: algiegel@optonline.net

SECRETARY:

Michael Gutsick, 34 Junard Drive, Morristown, NJ 07960
(973) 734-1648 E-mail: mikejgutsick@optonline.net

WEBMASTER:

Michael Storch E-mail: whynot3d@earthlink.net

THE BROADAXE

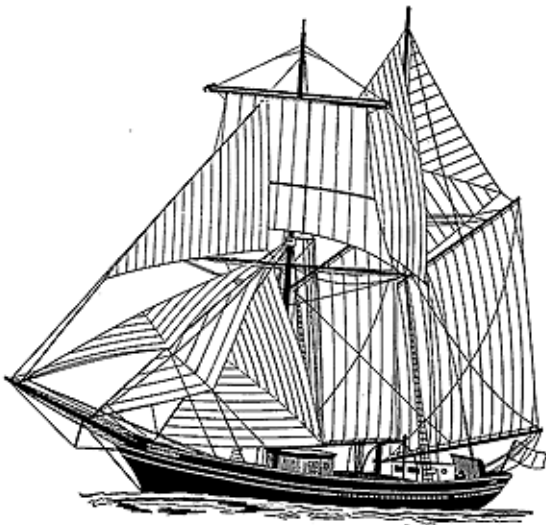
NEWSLETTER
of
THE SHIP MODEL SOCIETY OF NEW JERSEY

Founded in 1981

Volume 26, Number 6

June 2008

Newsletter Editor:
Michael Gutsick
34 Junard Drive
Morristown, NJ 07960



NEXT MEETING:

June 24, 2008

7:30 PM

**MILLBURN PUBLIC
LIBRARY**

**Making Sails for Static
Models
Presented By
Don Otis**