



Volume 33, Number 4

Newsletter of the Ship Model Society of New Jersey

April 2015

In This Issue

[Upcoming Events](#)
[Roseland Library Info](#)
[Joint Clubs Conference](#)
[April Meeting](#)
[Old Business](#)
[New Business](#)
[Tool Time](#)
[A Note from Stan](#)
[Useful Links](#)
[Club Information](#)

Our next club meeting is
May 26 at 6:45PM.

**ROSELAND PUBLIC
LIBRARY**

Theme:
Bring a Model



APRIL NOTES...

Thanks again to Tony and Sally for the use of the Aardvark. Our next Quilt Shop meeting is May 23rd. Start time will be noon instead of 10AM because of traffic congestion and access problems due to the Memorial Day Parade in Morris Plains.

Tom R. encourages all members receiving a printed copy of *The Broadaxe* to find a means to get online in order to view the electronic version (via relatives, friends, the library, etc.). To quote Tom: "It's an order of magnitude better than the hard copy because it has all kinds of links and is interactive... you'll enjoy it". An example: compare the 12 photos of the Joint Clubs Conference in the print copy to the more than 250 pictures in the electronic version. And these 250 are sharper and can be enlarged...

THE END OF AN ERA

Monday, April 27th, brought us a shock. It was on the day before our monthly meeting that we were informed by the Millburn Public Library that they had revised their room reservation policy. We were told that, despite our 34-year history with the library, we had lost:

- Our standing annual reservation for the fourth Tuesday of the month.
- Our preferred room rate, replaced by a significant rental cost that would trash our treasury.

We were also told that our traditional meeting space had been assigned to another group for the following day. Although we were able to reserve a much smaller room for our April meeting, it was clear that this would not work long term. So we started scrambling around for other arrangements – and found some pretty good ones in the process! They include:

- Millburn High School
- Clark Public Library
- Morris County Public Library
- Roseland Public Library

We listed the features that we needed to have as well as those that would be very beneficial, but not totally necessary. We believe, thanks to Ken and Jim especially, that we landed on an excellent

Continued on Page 2

UPCOMING EVENTS

MAY

- 9 - Bahrs Luncheon
- 16 - Echo Group Build
- 23 - Aardvark Workshop - **Noon**, 748 Speedwell Ave., Morris Plains
- 26 - Monthly Meeting - 6:45PM, Roseland Public Library, 1st Floor

JUNE

- 13 - Echo Group Build
- 20 - Aardvark Workshop - 10:00AM, 748 Speedwell Ave., Morris Plains
- 23 - Monthly Meeting - 6:45PM, Morris County Library, 2nd Floor

JULY

- 18 - Aardvark Workshop - 10:00AM, 748 Speedwell Ave., Morris Plains
- 28 - Monthly Meeting - 6:45PM, Location to be Announced
- TBD - Echo Group Build

On the Horizon

Joint Clubs Meeting - *Tentative*
June/July 2015 (Annapolis)

L'Hermione visit - *Tentative*
June/July (Annapolis, NYC)

NRG Conference
October 22-24 (New London)

Tech Sessions

None currently scheduled

- There's plenty of free parking with nearby overflow parking if needed.
- There's a separate kitchen area with a stove.
- We will have storage for our coffee pot, etc.
- We will have access to their overhead projector.
- The library is 1 mile from Exit 5 on Route 280.
- The room is right off the front entrance; you don't need to walk through the library to get to it. When you enter the library you are in a small vestibule - the room has its own entrance from this vestibule.
- Although they usually don't allow 12 month bookings, in our case they are making an exception as they were impressed that we have such a long and steady track record at Millburn.
- The room is NOT AVAILABLE the 3rd or 4th Tuesday in December. It is used for a very large Lionel Train layout at Christmas time. We would need to shift this meeting to earlier in the month or we could meet on a Saturday in December.
- Bloomfield Ave. is about 2 miles away and there are a number of restaurants or diners we could take over. However, with no real closing time and access to a kitchen, we could hang out at the library and order in pizza. Just a thought.
- The most important thing is they actually want us. The director likes the idea that we could do some sort of public outreach such as a public work session, al la Bahr's or display models. He actively looks for groups to meet in the library as it helps fulfill the library's mission to serve and educate the public.

Ken and Jim talked with Chris who is the Library Director and Terry who is the administrative assistant. Both very nice people and they work at the library – so if there is ever anything we need they are right there. The only drawback is that the library will be farther for some people.

On Page 3 are a rough layout of the library, photos of the room and directions. The library proper is larger than shown; the diagram is not to scale but does show where the rooms are located. **We will be holding our next meeting there on Tuesday, May 26th.**

In addition to the above, two other locations are being looked at: the Bernards Township Library and the Presbyterian Church in Summit.

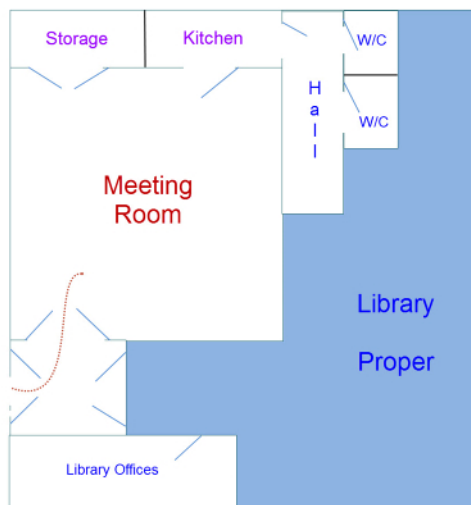


venue – the Roseland Public Library.

- The room available at Roseland is large enough for our meetings and there are plenty of tables and chairs.
- The room cost is very manageable.
- We have flexible meeting hours if we need them.

Roseland Public Library

20 Roseland Ave
Roseland, NJ 07068
(973) 226-8636



DIRECTIONS

From the New Jersey Turnpike or the Garden State Parkway take Route 280 WEST to Exit 5B toward the Caldwell's. Route 280 exits onto Livingston Avenue (Route 527).

From Western New Jersey and Pennsylvania take Route 280 EAST to Exit 5B toward the Caldwell's. Route 280 exits onto Livingston Avenue (Route 527).

Then, from either starting point:

At the second light, turn RIGHT onto Eagle Rock Avenue. At the first light, turn LEFT onto Roseland Avenue. Pass the first traffic light at Harrison Avenue. At the next street, turn RIGHT onto Fells Road. Immediately to your RIGHT will be the Library's driveway on Fells Road.

JOINT CLUBS CONFERENCE

The annual Joint Clubs Conference was held on April 25th. Another enjoyable day in the books. Fortunately, the weather was clear, if a little cold. This year's host club was Boston's USS Constitution Shipwrights Guild.

Represented at the event were more than 100 models, along with the usual vendors offering parts and supplies, books, ship's plans and other items of interest to modelers. As always, the food was excellent and plentiful. Two of our members presented technical sessions; Jeff Fuglestad gave a primer on small soldering and Dan Pariser demonstrated seizing techniques.

As a club, we swept the top three awards in the Power category! First place went to Captain Nick Starace II for his paddle wheeler *Dorine*. Ozzie Thalmann captured second prize for another of his animated models, *USS Arizona*. Third place was won by Jeff Fuglestad for his 1/350th *Titanic*. The Jim Roberts Award was presented to Spence Delin of the Philadelphia Club for his model of a 30' admiral's barge in 1/32nd scale. The rendition was outstanding, complete with weathering and miniature brasswork for such items as oarlocks and poles. Spence won the Jim Roberts Award 2 years ago. This year there was no contest, as the judges were unanimous in their voting. The result continued a trend of several years now, where small models have consistently finished ahead of their larger, more detailed competitors. This is in keeping with the purpose of the award, which is to recognize excellence in craftsmanship and effort rather than historical accuracy or complexity. Several members arrived on Friday the 24th to tour Mystic Seaport. Click these links – [JCC1](#) and [JCC2](#) – for photos of the weekend festivities.



Speaking of Mystic, the 2015 NRG Conference will be held there on Thursday, 10/22 thru Saturday 10/24. The NRG is preparing special tours not offered to the general public at the site on Thursday. The special arrangements will pretty much fill the day, so if you want to tour the rest of the Mystic Seaport attractions available to the public, you will probably want to plan this for the Wednesday before the conference or on Sunday after the conference. Featured will be these special events:

1. Inside the Archives/Library
2. Models not on public display
3. Small Craft Collection
4. Inside the Shipyard

Each tour will be approximately one hour and will be conducted throughout the day in a round-robin format such that about 100-120 members can take part in groups of 25-30.



JOINT CLUBS CONFERENCE



APRIL 28 MEETING

In attendance: 26 Members and 2 guests, Mike Rogers from Mt. Vernon, NY (2nd time) and Paul Anderson from Cresskill, NJ. This is Paul's first visit. He has been building kits for 25-30 years.



OLD BUSINESS



Hermione. John Maughan gave an update on what's happening with the re-creation of the ship that brought General Lafayette to the colonies in 1780 to support the cause for independence. John has been following progress of the ship's construction for several months and announced that *Hermione* is currently in the middle of the Atlantic on its way to the States. John also suggested that we might want to use the French pronunciation *L'Hermione* ("Lair-me-un") in deference to its heritage when referring to the vessel.

The build took 17 years and was carried out using 18th century shipwright methods, i.e., doing things "the old fashioned way". In fact, the only thing that separates the current *L'Hermione* from its predecessor is the addition of engines, a safety requirement. The builders actually reconstructed the original shipyard in which the first *L'Hermione* was built.

The entire effort has been a massive tourist attraction. It has also received a lot of press in Britain. Not complimentary, by the way. Some old wounds never heal... The British press has referred to Lafayette as America's BFF: Best French Friend. *L'Hermione* will initially land in Yorktown, VA the beginning of June and continue up the East coast, making stops in Mount Vernon, VA, Alexandria, VA, Annapolis, MD (June 16/17), Baltimore, MD,

Philadelphia, PA, New York City (July 1-4), Greenport, NY, Newport, RI, Boston, MA, Castine, ME, and Lunenburg, Nova Scotia. She will make her final U.S. stop in Castine on Bastille Day before heading to Halifax and back to France where she will be permanently docked. The vessel will be manned by two 75-person crews, a "blue and gold" arrangement. 2/3 of the crews are amateur volunteers and 1/3 are women.

Ships in Scale has been running articles on the vessel over the past 6 issues, and details of the Annapolis visit are outlined in a March 14 article in the *Capital Gazette* ([click here](#)). Tom R. will check to see if we can arrange a club visit when *L'Hermione* arrives in our area. Several members said they would be interested in going to Annapolis as well.

NEW BUSINESS



It's dues time again. 'Nuff said.

Larry Friedlander shared some thoughts on figure painting. He is considering holding a workshop on how to prepare figures, prime them, then paint them with a little more sophistication than what we typically see in the "tee shirt and dungarees" scheme. Larry thinks the best way to do this is to schedule a Saturday session at the Quilt Shop. The format would feature a mix of instruction and hands-on individual effort. Larry agreed

Continued on Page 7

NEW BUSINESS



to provide prepared, primed figures for this project, at a larger scale than we would probably use for our models but more appropriate for demonstration purposes. He would like to do this for the whole club, but it involves a lot of preparation and expense, and there are probably those who are not interested. The most likely scheduling for the workshop is this Fall, from 10AM to 1PM. Up for discussion is who will buy what materials. Michael Storch strongly endorsed Larry's technical and instructional talents in figure painting techniques. About a dozen members said they would be interested in attending the workshop.

Larry also enthusiastically recommended that members consider hiring Barry Rudd to put in a

dust collection system like the one Barry installed at Larry's house. According to Larry, it works great! Keep in mind that Barry is permanently leaving the area later this year, so if you're interested *don't procrastinate!*

Sadly, also leaving us is Michael Storch, who is starting a hydroponics business in Shanghai, China. Hydroponics is a way of growing plants using mineral nutrient solutions in water, without soil. Michael has been a long-time significant contributor to SMSNJ in a variety of roles. We will miss you, Michael, and wish you much success! As this was Michael's last meeting (we hope not forever!), he offered special thanks to all members for their support during this past year, a particularly difficult one for him.

TOOL TIME



Steve Fletcher was recently in the Annapolis area for a wedding and was invited by Jack Hudock to attend a Saturday working session at the Naval Academy Museum. At this session, Steve got to view the ships being worked on and various techniques being used. One of these techniques was small silver soldering using a custom built torch, a procedure that leaves virtually no residue. Jack sent Dr. Steve an email with details about the device, essentially a miniature propane blowtorch. Here's a copy of what Jack forwarded:

HOMEMADE MINIATURE BRAZING TORCH

The instructions for making this torch originally appeared in the hobby magazine *Railway Model Craftsman* about 1972. Those instructions have been modified to make the torch even smaller and easier to construct. Note that this has been deliberately designed for very small work, such as the fittings described in Harold Underhill's book on building the brigantine *Leon*. You will have difficulty joining two pieces of 1/8-inch diameter brass tubing with this torch. For work of that size you can use a standard commercial torch.

To make this torch you will need a small (one pound disposable tank) propane or MAPP® torch, such as is sold in most hardware stores. This is because there

are two parts of the miniature torch that must be brazed, not soft soldered. Eventually, this same torch (with the burner tip removed) and tank will be connected to the miniature torch.

Essential materials needed: K&S brand telescoping brass tubing in sizes 1/16-inch, 3/32-inch and 1/8-inch outside diameter (OD). Twelve feet of flexible plastic tubing, about 1/8-inch inside diameter (two six-foot lengths). A vibrator aquarium pump.

Take a 6½-inch length of 1/16-in OD tubing and, with a file, taper the end slightly. Take a 1/8-inch length of 3/32-inch OD tubing and braze/silver

Continued on Page 8



HOMEMADE MINIATURE BRAZING TORCH

solder it 1/4-inch back from the end of the tapered end of the 1/16-inch tube. File away most of this 3/32-inch tube, leaving three “centering lugs,” per the drawing on Page 9. This is the air tube, which will run down the center of the torch. See sketch “A”.

Take a 6 3/8-inch length of the 1/8-inch OD tubing and, about 1 1/2-inch from one end, drill and file a hole about 1/16 by 1/8-inch long. Take a 1 1/2-inch piece of the 1/8-inch OD tubing and cut and file it to fit over this hole at about a 45-degree angle, per the drawing. Don't rush. Get a good fit, then, using minimum solder, braze/silver solder this short piece over the hole. Check carefully to be sure the joint is tight and the hole has not been soldered shut. This is the outer tube, which will carry the gas. See sketch “B”.

Slide the air tube inside the gas tube so the end with the lugs protrudes 1/32-inch from the end of the gas tube. Slide a 1/8-inch piece of 3/32-inch tube over the opposite end of the air tube, and soft solder this to the gas tube. The torch is now complete.

The gas supply is the same one-pound tank that you used to braze the torch parts. Remove the burner tip from the short pipe and slip the flexible plastic tubing over the end. You may want to make an “adapter” out of a short piece of rubber hose, a couple of simple hose clamps and a few pieces of telescoping brass tubing to better fit the smaller flexible plastic tubing that feeds the torch. See sketch “C”.

The torch cannot be connected directly to the vibrator air pump, because that will cause the flame to jiggle. A damper must be installed between pump and torch. I used a small peanut can, about 2 1/2-inch by 2 1/2-inch. A capped length of PVC pipe of similar volume could be used. A piece of brass tubing of appropriate diameter is soldered or epoxied in place for the incoming air. A second, slightly longer piece of tubing is soldered or epoxied next to it, with several 1/32-inch holes drilled along its length. By sliding the output tubing over these holes, the amount of air to the torch can be adjusted.

Alternatively, a two-way aquarium air valve may be installed here to bleed off excess air. See sketch “D”.

I mounted the gas tank, pump, and damper with hose clamps in a small box. Two screw eyes hold the torch when not in use. See sketch “E”.

To light the torch, turn on (or plug in) the air pump, then, just “crack” the gas valve. Light the gas and turn it down until you get a fine, pointed flame. With extended use the torch may get uncomfortably hot. A wine cork may be drilled and slipped over the end for a handle.

Supplemental Notes:

By extending the tip of the air tube 1/32-inch forward of the gas tube, the risk of getting a “flash back” in the torch is eliminated. Air and gas mix externally.

A slightly larger flame may be obtained by taking a 1/2-inch length of 5/32-inch brass tubing and slipping it over the end of the torch tip, letting about 1/8-inch extend beyond the air tube. Turn up the air and gas slightly. See sketch “F”.

The pressures of both the gas and the air are low enough that hose clamps at the torch aren't necessary. A good snug fit over the brass tubing is adequate.

If you find that the torch is getting too hot to hold during use, you may need a larger torch for the work being done. Remember, this torch was designed for brazing SMALL parts.

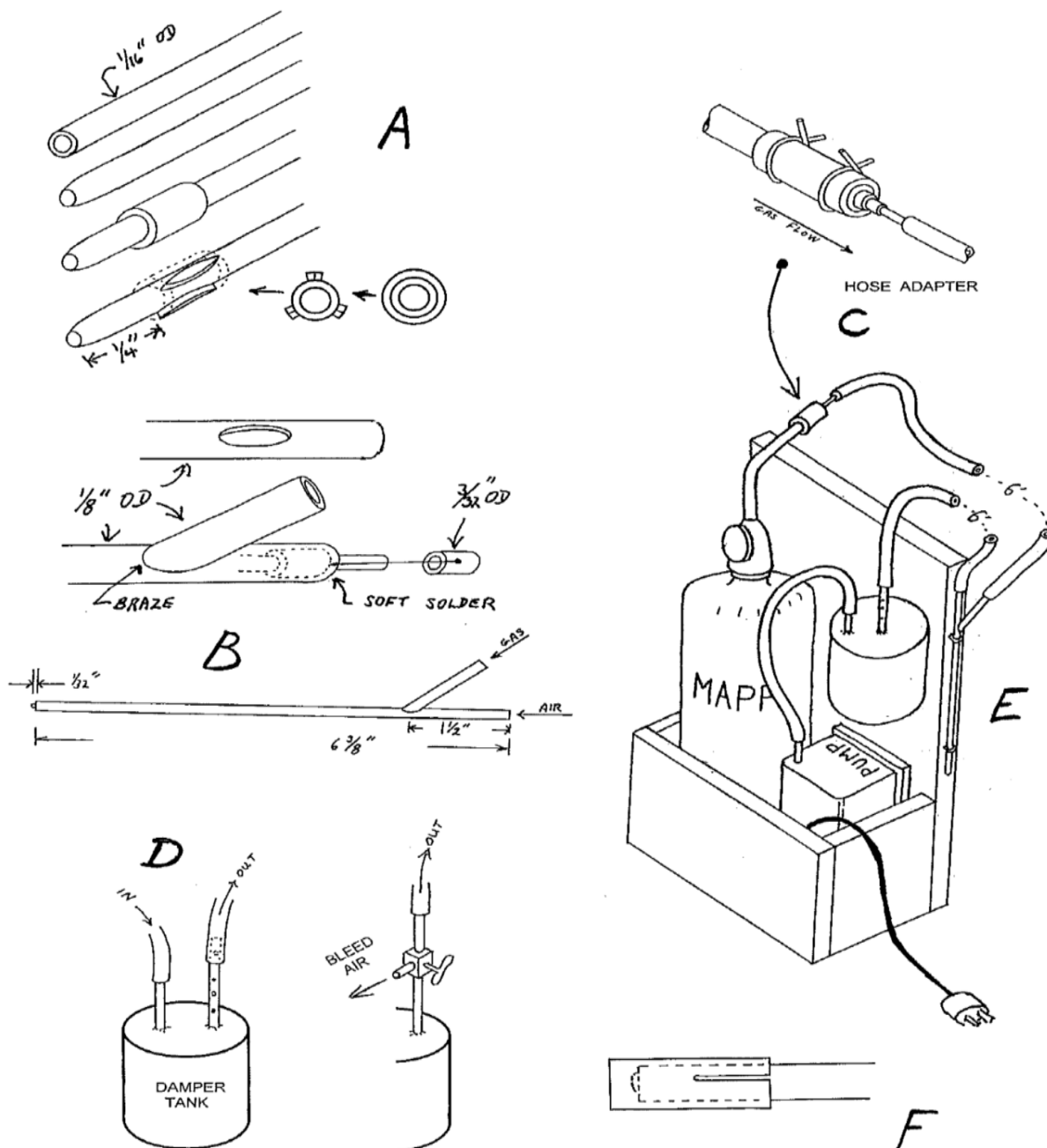
MAPP gas burns slightly hotter than propane. 3600°F vs. 3497°F (with air, not oxygen).

This isn't the place for a dissertation on brazing, but remember that brazing/silver soldering requires special flux. Borax compounds are usual. The flux used for soft soldering (tin-lead) will not work.

TOOL
TIME



HOMEMADE MINIATURE BRAZING TORCH



A Note from Stan...

Steve Maggipinto

To: stevemagg@optonline.net

Subject: Thank the club

Hello Steve,

I read in the **Broadaxe** that I was made an Honoree Member of the club. I am very proud to be such a member and I thank you all.

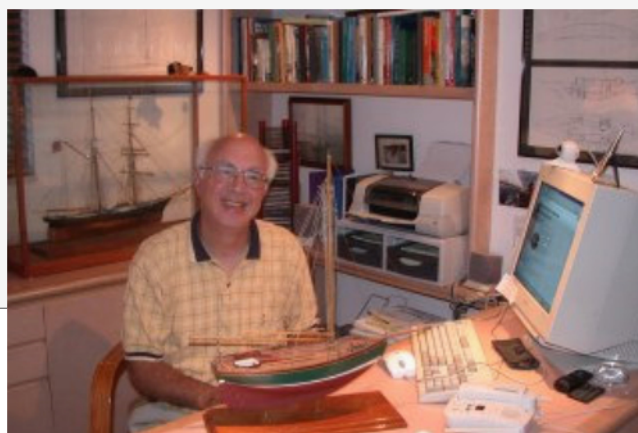
Over the last few years it has been difficult for me to speak and move about, I am largely wheelchair bound and that's why I have not come to meetings. I am still active in the modeling community with my on line **Fiddlers Green Model Ships** business, where I help people to buy and sell, repair or commission, prepare Insurance appraisals for model ships and boats.

I look forward to reading the **Broadaxe** and seeing how successful the club I helped found way back in 1981-2 is. It is enjoyable to be part of such a dedicated group of people.

Sincerely,
Stan Sinowitz

Stan Sinowitz
Fiddlers Green Model Ships
<http://www.FiddlersGreenModelShips.com>

Stan Sinowitz Photos
<http://www.StanSinowitzPhotos.com>



USEFUL LINKS

[Ship Model Society of New Jersey website](#)
[Example of website resources](#)
[Past issues of The Broadaxe](#)
[Links to resources and other clubs' newsletters](#)
[Club lending library](#)
[Model Ship World](#)



Links to newsletters of the [Rocky Mountain Shipwrights](#) (Bob Fivehouse's club) and the [Connecticut Marine Model Society](#)

The Ship Model Society of New Jersey

The Broadaxe is published monthly by The Ship Model Society of New Jersey (SMSNJ), a nonprofit organization dedicated to teaching and promoting ship modeling and maritime history. Membership dues are \$25.00 for the first year and \$20.00 per year thereafter.

Visit our Web Site at:
<http://www.shipmodelsocietyofnewjersey.org> where a web version of *The Broadaxe* can be found. *The Broadaxe* is distributed by both US mail and email in PDF format.

Regular meetings are held on the fourth Tuesday of every month at 6:45 PM, at the Roseland Free Public Library, 20 Roseland Avenue, Roseland, New Jersey. Guests are always welcome.

Contributions to *The Broadaxe* are always welcome, and SMSNJ members are encouraged to participate. Articles, shop hints and news items may be submitted directly to the Editor as typed manuscript or electronic files, either on discs or by email. Handwritten notes or other materials will be considered depending on the amount of editing and preparation involved.

The Broadaxe is written and edited by Steve Maggipinto, and distributed by Chuck Passaro and Olie Ericksen.

Your ideas and suggestions are always welcome. Please submit them to Steve Maggipinto.

If any member would like an email copy of the roster, please drop a note to Steve Maggipinto at the email address listed below. If there is an error on the roster let Steve know and the roster will be amended. Please make sure that your spam filter is not blocking emails from Steve or Chuck Passaro because if it is, you won't get *The Broadaxe* and member bulletins. You can eliminate the filtering by adding Steve and Chuck's email addresses to your contact list. Please keep the secretary informed of any changes so that the roster can be kept current. If you would like a printed copy of the roster, please send a SASE to Steve Maggipinto at the address below and one will be mailed to you. Rosters are also available at the monthly meetings.

Please keep your contact information up to date. Your email address is particularly important because that is the main avenue of communication for club announcements. In case of emergencies such as last-minute cancellations due to weather, emails will be sent to the members.

Direct All Correspondence To:

Steve Maggipinto
328 Sand Shore Rd., Budd Lake, NJ 07828
(973) 945-4509
E-mail: stevemagg@optonline.net

Club Officers

PRESIDENT:

Tom Ruggiero
54 Peach Orchard Dr, East Brunswick, NJ 08816
(732) 257-6063
Email: Ruggierotp@aol.com, Trugs@comcast.net

VICE PRESIDENT:

Jim Lavelle
11 Red Twig Trail, Bloomingdale, NJ 07403
(973) 492-9407
E-mail: Jim@JMLavelle.com

TREASURER:

Ken Schuetz
34 Oak Drive, Roseland, NJ 07068
(973) 226-9004
E-mail: knschuetz@verizon.net

SECRETARY:

Steve Maggipinto
328 Sand Shore Rd., Budd Lake, NJ 07828
(973) 945-4509
E-mail: stevemagg@optonline.net

WEBMASTER:

Chuck Passaro
E-mail: cpassaro@verizon.net