



Volume 33, Number 5

## Newsletter of the Ship Model Society of New Jersey

May 2015

### In This Issue

[Upcoming Events](#)  
[May Meeting](#)  
[Old Business](#)  
[New Business](#)  
[Show & Tell](#)  
[Books & Pubs](#)  
[Tool Time](#)  
[Echo Group Build](#)  
[Club Information](#)

Our next club meeting is  
**June 23 at 6:45PM**

**ROSELAND PUBLIC  
LIBRARY**



### MAY NOTES...

We have a new home!

As you might recall from last month's *Broadaxe*, we had several locations under consideration following our departure from the Millburn Public Library. Roseland was our first stop, and we had planned to try one or two more sites before deciding on a permanent base for the club. However, the response at the May meeting was so positive we have decided to forego further searches and settle on Roseland as the place we will continue to hold our monthly meetings. There is plenty of room, we have storage space, a private entrance and even a kitchen. Most importantly, the library staff is very supportive, and happy that we are there helping fulfill their mission to educate library patrons and bring new experiences to them. Travel-wise, it's a longer commute for some, an easier commute for others and a wash for still more. A bonus: there's a diner a few miles away for post-meeting gatherings.

Thanks again to Tony and Sally Alworth for use of The Aardvark Quilt Shop and for trusting us to hold our May session there in their absence.

Mike Rogers attended his third meeting as a guest in May, and, notwithstanding the disruptions caused by our search for a permanent home, Mike decided to join the crazy bunch we call SMSNJ. Even paid his dues on the spot! Welcome, Mike.

Congratulations to Ozzie Thalmann. On his 11th annual trip to Wisconsin, he came away with First Prize – again! This time he won for his motorized *USS Arizona* in Pearl Harbor trim. All icing on the cake for Ozzie – his annual treks are a highlight for him each year.

During a recent 40th wedding anniversary holiday, Tom R. visited the [Ships of the Sea Maritime Museum](#) in Savannah, GA. What he found were several exquisite models, many built by [Bill Hitchcock](#) in large scale with very fine detail. Tom found Savannah an interesting town, with much history, good food and an excellent railway museum. The maritime museum has a model of all the ships that have carried the name *Savannah*, including the [nuclear ship](#) which is now located in Baltimore.

A gentle (?) reminder that annual replenishment of the coffers is due next month. In Tom R.'s words "As you come through the double doors, pay the man!"

*Continued on Page 2*

## UPCOMING EVENTS

### JUNE

- 13 - Echo Group Build
- 20 - Aardvark Workshop - 10:00AM, 748 Speedwell Ave., Morris Plains
- 23 - Monthly Meeting - 6:45PM, Roseland Public Library, 1st Floor

### JULY

- 12 - Cruise around Staten Island - Navy Pier, 11AM
- 18 - Aardvark Workshop - 10:00AM, 748 Speedwell Ave., Morris Plains
- 28 - Monthly Meeting - 6:45PM, Roseland Public Library, 1st Floor
- TBD - Echo Group Build

### AUGUST

- 15 - Aardvark Workshop - 10:00AM, 748 Speedwell Ave., Morris Plains
- 25 - Monthly Meeting - 6:45PM, Roseland Public Library, 1st Floor
- TBD - Echo Group Build

### On the Horizon

NRG Conference  
October 22-24 (New London)

### Tech Sessions

None currently scheduled

## MAY 26 MEETING

In attendance: 26 Members and 2 guests, Mike Rogers (3rd time) and Jason Cui. This is Jason's first visit. He has been building model ships for more than 30 years. [Click here](#) for meeting photos.



## OLD BUSINESS



**Bahrs Luncheon** – Feedback was mixed on the menu, service and room, but overall, it was a fun day and a chance for members and their guests to once more get together in a relaxed, informal setting. The weather couldn't have been better, and the view of the landing, bridge and water traffic was superb as usual.

**L'Hermione** – Visits to the U.S. of the reconstructed French frigate are around the corner. We have not had the time to organize a trip as a club, so it will be "every man for himself". The vessel will be in New York harbor on the weekend of July 4th; whether it will be open for boarding or just viewable from the dock is open to question. *L'Hermione* will be in Annapolis on June 16/17 (Tuesday/Wednesday) and in Philadelphia on June 25-28 (Thursday – Sunday). For more information on her voyage, [click here](#). For photos taken aboard *L'Hermione*, her construction and some French/American historical commentary and paintings, [click here](#). Thanks to Barry Rudd for passing along this link.



*Hermione* in the [Naval Battle of Louisbourg](#)

Response to the **Tech Session Survey** has been slim and Tom R. encouraged members to pass along their preferences for topics. By way of example, Tom said he would like to see a session on painting figures. Larry Friedlander had previously agreed to do this and will be scheduling a hands-on workshop in the future, most likely at the Quilt Shop. A second example: Tom McGowan would like to see a presentation on using the internet.

## NEW BUSINESS



Jim Lavelle proposed a new method for presenting books and pubs and items brought for “Tool Time” sessions to our monthly meetings. Jim suggests that these be left on a table at the beginning of the meeting along with their respective detail sheets. Members can then review them before the meeting starts or at the break before the items are presented. This will provide an opportunity to come up with questions and/or observations in advance. Good idea...

There was no “From the Workshop” input this month, but Steve Maggipinto mentioned that if anyone would like to share experiences with a project – materials used, what has worked/not worked, etc. – Steve would include these experiences in *The Broadaxe*. The description does not need to be submitted as a finished piece – rough notes and bullet points are fine. Steve will take care of writing the final article for publication.

Tom R. mentioned that our club had received a request from the [Aspect Foundation](#), a non-profit student exchange organization that searches for and selects host homes for high schoolers from foreign countries. One of the students selected for the program has a special interest in ship modeling. The Aspect Foundation asked if any of our members would consider hosting this student for the school year 2015-2016. If any member is interested in more details, please contact Tom R. or Steve M.

Two-time guest Frank Summers has been approached by the [Lyons VA Hospital](#) about repairing a model of the WWII heavy cruiser [USS Houston](#). The model was accidentally damaged by a member of the hospital cleaning crew. Two of the turrets were knocked off and the display case needs to be replaced. The hospital is located off Rte 287 in the Basking Ridge area. If anyone is interested in repairing this model, please get in touch with Frank.



Sixteen years in the making, the [Staten Island Lighthouse Museum](#) is finally open for viewing. The museum is located a short walk from the Staten Island ferry terminal in the northeast corner of the borough. Mason Logie has talked to the executive director, Linda Dianto, about our club and Linda would like to come to a meeting to speak about the museum, possibly in July. She would like us to do some kind of event during the holiday season at the museum and perhaps put on a workshop. She has also invited club members to attend a 3-hour boat cruise around Staten Island on Sunday, July 12. The cruise starts at the former Navy pier at 11AM and costs \$50 (food not included, but you are free to bring our own). Mason will circulate a flyer about the event. Several members said they would be interested in visiting the museum and going on the cruise.

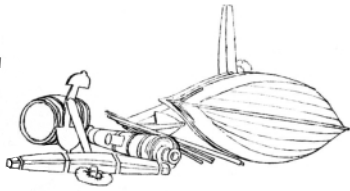


“Wall of Lights”

In the works is (perhaps) a second package for the Echo build. This might or might not happen depending upon negotiations between Greg Herbert of Admiralty Models and Jason Clark. This will be a Phase 2 for Echo *internals*: timbering, shot locker, decks, pumps – everything you see at the bottom of the [Admiralty Models Echo Section webpage](#). If this happens, we will most likely be seeing holly for the decks and hull planking below the wales, and Swiss pear for the deck furniture and hull planking above the wales. More to come on this.

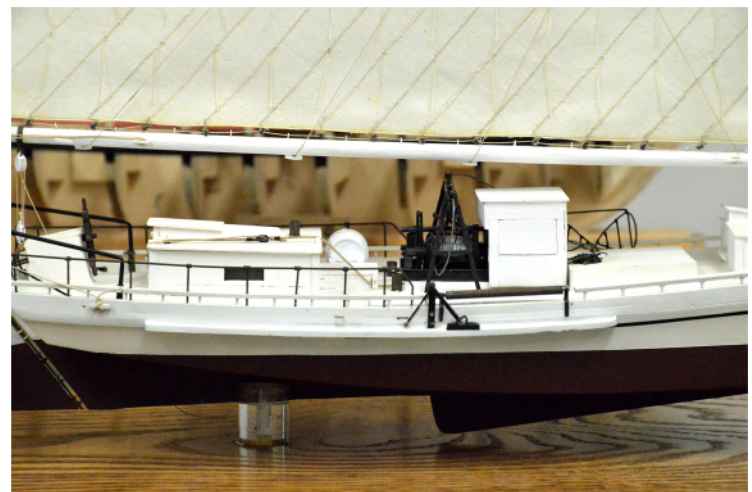
Tony Alworth suggested that it might be worthwhile contacting local newspapers to announce the presence of the club in the area (*Star Ledger*, *Montclair Times*, *Cedar Grove Observer*). Nick Starace used to be good at putting together news releases. Steve M. will contact Nick about this.

## SHOW AND TELL

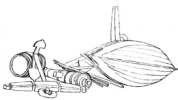


**Tom McGowan** brought his model of *Willie L. Bennett*, an oyster dredger built in 1899 and operated out of Maryland. Tom explained that at the beginning of the 20th century it was illegal to harvest oysters with a sailing vessel. The way the *Willie B's* crew got around this was to have their boat pushed into the oyster grounds by a powered craft they kept aboard. From there they went oystering under sail.

Tom's creation is a 3/8" scale [ModelExpo kit](#). ModelExpo sells this for \$150, but it is available on Ebay for under \$100. It is the first model Tom built after joining the club 12-15 years ago. Construction is plank-on-frame and Tom believes the kit turns into a nice looking vessel. There is a scratch built version on display in the [Mariners Museum](#) in Newport News, VA. It was this version that convinced Tom he "had to build this boat". There are a few things wrong with the model. It has only 1 oyster driver; the original had 2. All the blocks were purchased from Bluejacket. Tom painted these white, which was a standard at the time. He is very pleased with the way the scratch built handrails and jackstays or "lazy jacks" turned out. Tom airbrushed the hull and put together the sails from some thin cotton material he found at a store in Lakewood. His wife sewed the seams using a very fine stitch. Tom said the *Willy B.* was an interesting kit and a fun build.



## SHOW AND TELL



**Ken Whitehead** brought his 3/16th scale [Rattlesnake](#), a model in the early stages of construction. His son did not want him to paint the model, so Ken got in touch with Jason Clark who is now supplying wood through his new company [Crown Timberyard](#). Jason was able to provide Ken with a redheart wood that he could use unfinished without having to paint it. In years past, redheart wood was used to frame pictures, but the government has since declared it an exotic wood. It is now strictly controlled by the [Lacey Act](#). Ken used a stain to color appropriate sections of the hull planking and he will be painting the anchor and guns black. Ken has constructed some furniture as well. He showed a binnacle in 1/64th scale made from redheart (see photo). The binnacle contains a compass and a map drawer. Ken has also built 2 bilge pumps from redheart. One problem with the [ModelExpo kit](#) is that all the furniture is supplied in die cast metal, which Ken doesn't care for. He is remaking all these parts.



**John Maughan** showed his Echo cross-section. He is using Swiss pear, milling his own scale lumber from a large, rough hewn board purchased at a "hard-to-find" wood specialty store in Montgomery County, PA. All the frames are finished, but not all have been glued and, at the time of the meeting, the construction was held in place with 2 clamps and spacers. John has been working on this project since November, when he joined the Echo Group Build.

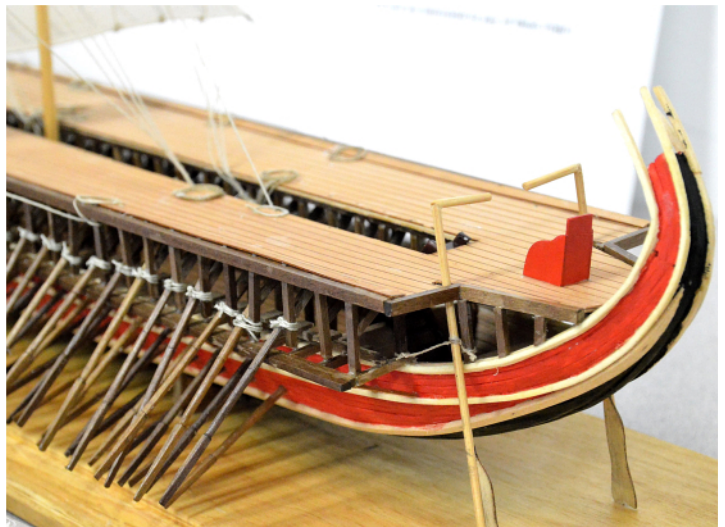
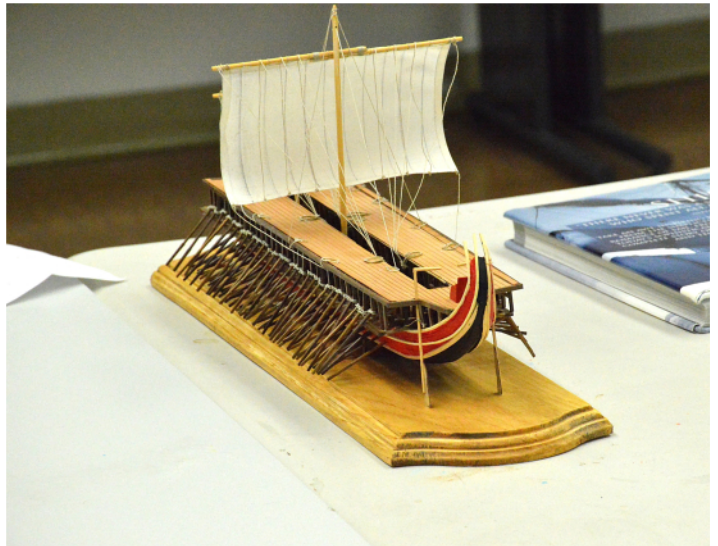
## SHOW AND TELL



Don Otis next took the stage with a Model Expo [Greek trireme](#), complete with an illustrated book on early vessels he used as a source for the project. Don built this model for the owner of the bake shop who provided refreshments for SMSNJ meetings for many years. Instead of using the walnut supplied by the kit manufacturer, Don substituted some leftover wood he had on hand from his [Confederacy](#) build and a couple of other kits.

Of particular interest to Don was the arrangement of the oars, in different planes along 3 decks to ensure coordinated, smooth vessel movement. Don built 156 of these out of 2mm x 2mm walnut. This took awhile, but was made somewhat palatable by listening to Mets games at the same time (?!). And Don only broke 1 oar in the process.

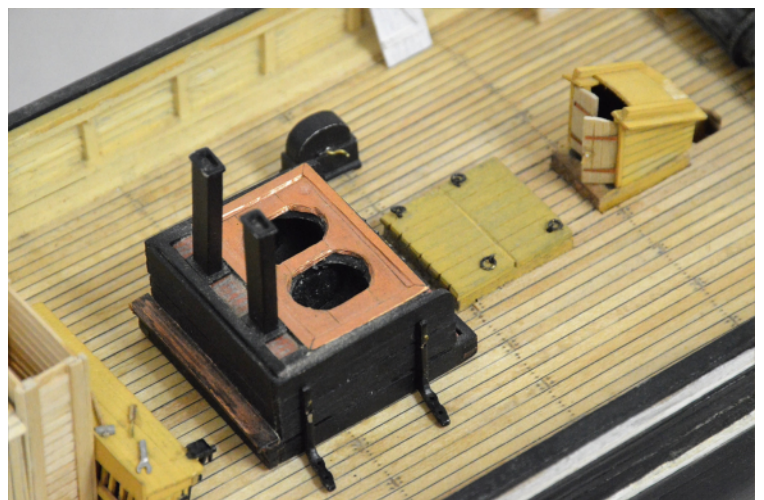
A few interesting facts (actually, speculations based on drawings)... Trireme masts and sails were only used to get from one place to another. During battle, both the masts and sails were taken down and laid flat on the deck. During the [Battle of Salamis](#) in 480 BC, Themistocles was able to trick the forces of Xerxes, thus blocking a Persian invasion and allowing the Greeks to develop the culture for which they are famous. Depending on sea and wind conditions, a trireme could travel up to 5.8 knots, propelled by both male and female rowers. The rowers on the upper decks were called *thranites*, the second deckers were *zygites* and those on the third deck were called *thalamites*. The 3 row construction is where the "tri" in trireme comes from. The primary weapon of the trireme was the ram, the intention being to strike an enemy ship amidships and then board her for hand-to-hand combat. This is portrayed graphically in the sequel to the movie 300, *Rise of an Empire*. The build took Don about 3½ months to complete.



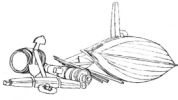
## SHOW AND TELL



**Bill Houston** presented his model of *Charles W. Morgan*, a [Model Shipways kit](#). Talking about it took him back to when he was 12 or 13 years old, to a time he had the old yellow Model Shipways book (which, unfortunately he threw away). He recalled that when he was younger, his parents took him on a trip to [Mystic Seaport](#) where he got his first look at the *Morgan*. Many years later, he had a chance to view the ship again, taking about 300 pictures – so many that the staff thought he was a reporter doing a story on the vessel! Upon his return home, Bill did some searching and found the model he was currently showing online. He has been working it a little bit at a time, putting together brickwork, furniture, tools, etc. The primary motive behind building the kit was the opportunity to create fine detail in such things as the skylight. Bill is using microscope glass for this and believes it can't be beat for authenticity. He is also thinking about weathering the model, although the copper bottom is already doing a good job of this on its own. To simulate deck caulking, Bill used electrical tape between the planks, laying the planks on end to the sticky surface and trimming away the excess tape afterward. Although Bill doesn't expect to win any awards for the model, building it has been a fun experience for him.



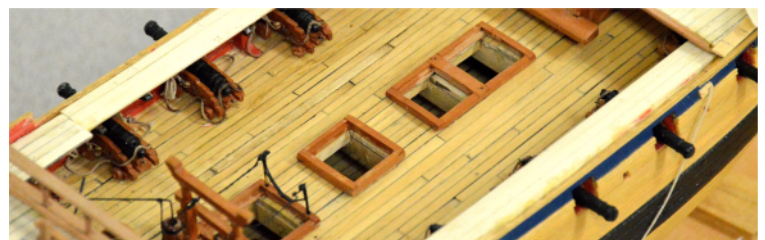
## SHOW AND TELL



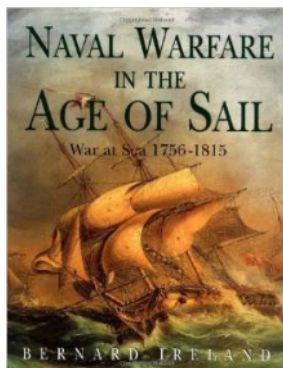
**Jason Cui**, a first time guest, brought 2 miniature award-winning models that he had built. In 1983, Jason won the Gold Medal for his 1941 [\*HIJMS Mutsu\*](#) in the 7th World Championship Boat Models category at a competition held in the Czech Republic. In April 1987, Jason won the Gold Medal in the 4th World Championship Boat Models category (for another version of *Mutsu*) at a competition held in France. The full hull ships were constructed from 1/700 kits containing fiberglass bottoms and copper sheet upperworks; they are both highly detailed with incredibly fine rigging and antennas.



**Tom Ruggiero** discussed the progress he has made on his 1/96th *HMS Liverpool*. Since the last time he presented, Tom has installed the Quarterdeck and Forecastle decks, the Quarterdeck breast rail, hatches, coamings and windlass. He has started to put in the standards for the rigging and is working on the plank-sheers, cap rails, belfry, forecastle rail and catheads. Tom has been working on the model for 7 or 8 years. This is his second *Liverpool*; the original was in 3/16 scale. Its construction was interrupted by a commission to build the *Hartford*, a project that took about 2 years. Something Tom will not do again, by the way – too much like work. When Tom returned to his 3/16 *Liverpool* he could see that it was going to be way too big, so he decided to build a smaller version. This saves on the cost of the base and case, a nice side benefit.



## BOOKS AND PUBS



Jim Lavelle presented a book by Bernard Ireland entitled *Naval Warfare in the Age of Sail – War at Sea 1756-1815*. He picked it up at the NE Joint Clubs meeting from one of the book sellers. When he saw the price of \$22 (it lists for more than twice that), Jim decided to give it a closer look. The volume covers a number of important naval wars and battles: The Seven Years War, The American Revolution, The Napoleonic Wars and the War of 1812. The book contains a lot of information and graphics, written from the perspective of the Royal Navy. There are many period art pieces; these help the reader understand the action described in the text. There are many modern illustrations of ships discussed in the book. Jim doesn't know how accurate these are; they are all drawn by the same artist. For the price paid, Jim considers this a great value and it is yet another reason he enjoys the NE Joint Clubs meeting.

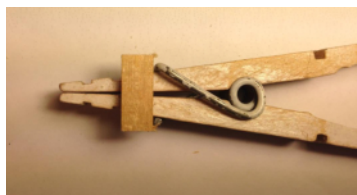
## TOOL TIME



### Simple But Effective Clamps You Can Make Using Something You Probably Already Have in the House

*With thanks to Barry Rudd...*

- 1 Glue a short strip of wood, approximately 1/8" x 1/8".  
(Actual dimension can vary depending on width of hull plank.)  
Just glue the wood piece to one leg of the clothespin.



- 2 Use clamps like this:



Easy to use -  
Easy to make -  
And inexpensive...



*Note the clothespin pieces are reversed to give added clamping pressure. If additional pressure is still needed, glue two pieces of sandpaper to the inside surface of the clamp.*

## ECHO GROUP BUILD

May 16, 2015

Author: Jim Lavelle



Hi Everyone,

This email is a sort of recap for those that were not able to attend May's ECHO meeting at Jerry's house.

There were six of us at the ECHO meeting. For the most part we reviewed detailed instructions I've written for making the frames. [Click here](#) for these instructions.

Saturday's meeting was also a first for the club. We used Skype to include Jason! Using only the camera that is part of the laptop lid Jason said the video and sound was good. He was able to see frame drawings when I held them up to the camera. I've been having some hard drive issues and towards the end of the meeting my computer crashed putting an end to this first Skype call but we have high hopes for the future. Michael Storch thinks we can have up to 25 people on a call when using the free version of Skype so as we get better at this we can include members from far flung places like Golden, CO, Florida and Shanghai along with Jason.

Back to business, Bill suggested an alternative way of making the 10 frames in the middle of the model so that you don't have to cut any chocks. When the model is completed you will really only be able to see the chocks on frames Deadflat0 and 5 Aft. While looking though Vol. 3 of *The Fully Framed Model* by David Antscherl and Greg Herbert I found an illustration of exactly what Bill described. It turns out that when Greg built his *Pegasus* he used scarf joints for many of the frames as this eliminates the need for chocks, speeds up the process and produces less waste due to mistakes.

One of the great things about group builds is the opportunity to learn from others. This is just another example of exchange of ideas in action.

See photos from the session opposite. The photo of me pointing to the laptop should have Jason on the screen but we didn't think of taking the photos until after the laptop had crashed. Next time... ;-)

Jim



# The Ship Model Society of New Jersey

*The Broadaxe* is published monthly by The Ship Model Society of New Jersey (SMSNJ), a nonprofit organization dedicated to teaching and promoting ship modeling and maritime history. Membership dues are \$25.00 for the first year and \$20.00 per year thereafter.

Visit our Web Site at:  
<http://www.shipmodelsocietyofnewjersey.org> where a web version of *The Broadaxe* can be found. *The Broadaxe* is distributed by both US mail and email in PDF format.

Regular meetings are held on the fourth Tuesday of every month at 6:45 PM, at the Roseland Free Public Library, 20 Roseland Avenue, Roseland, New Jersey. Guests are always welcome.

Contributions to *The Broadaxe* are always welcome, and SMSNJ members are encouraged to participate. Articles, shop hints and news items may be submitted directly to the Editor as typed manuscript or electronic files, either on discs or by email. Handwritten notes or other materials will be considered depending on the amount of editing and preparation involved.

*The Broadaxe* is written and edited by Steve Maggipinto, and distributed by Chuck Passaro and Olie Ericksen.

Your ideas and suggestions are always welcome. Please submit them to Steve Maggipinto.

If any member would like an email copy of the roster, please drop a note to Steve Maggipinto at the email address listed below. If there is an error on the roster let Steve know and the roster will be amended. Please make sure that your spam filter is not blocking emails from Steve or Chuck Passaro because if it is, you won't get *The Broadaxe* and member bulletins. You can eliminate the filtering by adding Steve and Chuck's email addresses to your contact list. Please keep the secretary informed of any changes so that the roster can be kept current. If you would like a printed copy of the roster, please send a SASE to Steve Maggipinto at the address below and one will be mailed to you. Rosters are also available at the monthly meetings.

Please keep your contact information up to date. Your email address is particularly important because that is the main avenue of communication for club announcements. In case of emergencies such as last-minute cancellations due to weather, emails will be sent to the members.

---

Direct All Correspondence To:

Steve Maggipinto  
328 Sand Shore Rd., Budd Lake, NJ 07828  
(973) 945-4509  
E-mail: [stevemagg@optonline.net](mailto:stevemagg@optonline.net)

---

## Club Officers

### PRESIDENT:

Tom Ruggiero  
54 Peach Orchard Dr, East Brunswick, NJ 08816  
(732) 257-6063  
Email: [Ruggierotp@aol.com](mailto:Ruggierotp@aol.com), [Trugs@comcast.net](mailto:Trugs@comcast.net)

### VICE PRESIDENT:

Jim Lavelle  
11 Red Twig Trail, Bloomingdale, NJ 07403  
(973) 492-9407  
E-mail: [Jim@JMLavelle.com](mailto:Jim@JMLavelle.com)

### TREASURER:

Ken Schuetz  
34 Oak Drive, Roseland, NJ 07068  
(973) 226-9004  
E-mail: [knschuetz@verizon.net](mailto:knschuetz@verizon.net)

### SECRETARY:

Steve Maggipinto  
328 Sand Shore Rd., Budd Lake, NJ 07828  
(973) 945-4509  
E-mail: [stevemagg@optonline.net](mailto:stevemagg@optonline.net)

### WEBMASTER:

Chuck Passaro  
E-mail: [cpassaro@verizon.net](mailto:cpassaro@verizon.net)