



Volume 34, Number 8

Newsletter of the Ship Model Society of New Jersey

August 2016

In This Issue

[Upcoming Events](#)
[Upcoming Tech Sessions](#)
[Old Business](#)
[New Business](#)
[Tech Session](#)
[Show and Tell](#)
[Club Information](#)

Our next club meeting is
September 27 at 6:45PM

ROSELAND PUBLIC
LIBRARY

AUGUST NOTES...

Jim Lavelle opened the August meeting at 1845 and welcomed the members present and 3 guests:

- Josh Fichmann from Marlton. Josh is working on his third wood ship model, his fourth overall. He has done the Revell [USS Constitution](#), the [Sharpie](#) by Midwest, the [Picket Boat](#) from Model Shipways, and is currently building the [Prince Neuf Chatel](#), having just planked the hull.
- Bill Howard from Hamilton, a friend of Rich Larue. Bill states that Rich is a great model railroader that we screwed up with model ships. So Bill wanted to see what we're all about.
- Kevin O'Neil came to his second meeting. Kevin is working on [Sultana](#).

The Broadaxe was issued and is well done. In answer to the question raised last issue about the club's fastest modeler, Ozzie insists he is not competing with Don Otis for the honor. Don's title is secure.

Al Geigel presented the Treasurer's report. The treasury is healthy.

Secretary Tom Ruggiero asks that you please use the electronic show and tell forms. He reports that we are still working on the possibility of having Facetime/Skype meetings for our out of town members.

Tom Ruggiero also brought in some copies of the South Street "New York Culture" web-page for perusal. Barry Rudd brought in magazines for people to take as he will be on his way to Florida. Tom Ruggiero brought some strip wood from Mike Gutsick's stock for sale. [Click here](#) for meeting photos. Note the first few pictures that show the new home for the Chinese Junk and New Bedford whaleboat that were donated to the club last year.

The August workshop at Chuck Passaro's was a good time for all. Jim worked on the Royal Barge, Tom worked on *Liverpool*, and guest Kevin O'Neil worked on *Sultana*. Jim Lavelle opined that the Royal Barge may be a good subject for a group build.



UPCOMING EVENTS

SEPTEMBER

- 17 - Carving Workshop: Chuck Passaro's house
- 27 - Monthly Meeting - 6:45PM, Roseland Public Library, 1st Floor

OCTOBER

- 6—8 - NRG Conference, San Diego, CA
- TBD - Group Working Session
- 25 - Monthly Meeting - 6:45PM, Roseland Public Library, 1st Floor

NOVEMBER

- TBD - Group Working Session
- 22 - Monthly Meeting - 6:45PM, Roseland Public Library, 1st Floor

On the Horizon

Exhibition

December and January at the Morris County Library, Whippany, NJ

Joint Clubs Meeting at Annapolis

OLD BUSINESS



Morris County Library Show: December 4 through January 17, 2017. See Page 6 for a list of those models already committed to the show. If anyone wants to add to this list, please forward the information to [Steve Maggipinto](#). In addition to those shown, it would be nice to have another dozen or so models to display. Send an email to Steve indicating whether the model is cased or uncased and approximate dimensions (including case).

Carving: Chuck is doing an introduction to miniature carving. Because it is very detailed and in order that everyone might have a look, two separate sessions were held at the meeting: one during the regular meeting time, the other at the break.

Tech Sessions: These have been lined up until February 2017; they are listed opposite and on the website. Next month's Tech Session is Gilding. Jim Lavelle will be gilding what we carve at Chuck's Workshop on September 17th. The Tech Session for the October meeting will be Casting, and November is bring a model night. The auction will be held in January. In February we will making belaying pins. Vice President Chuck will then be canvassing the members for future Tech Sessions.

Trip to Annapolis: To be worked out by Roy next month.

Alan Frazer Plaque: The plaque for Alan Frazer's family was shown. Great job by Steve. We also voted to make a \$100 donation to the [Mariner's Museum](#) in Alan's name. **Ed Note:** The plaque was presented in person to Alan's wife Jane by Ryland Craze of the [Hampton Roads Ship Model Club](#) on Saturday, September 10th at their annual picnic. See the next page for photos. The plaque is outstanding; thanks to Steve Maggipinto for the idea and his great work.

Upcoming Tech Sessions



September - Gilding a carving with gold leaf: *Jim Lavelle*

October - Simple one piece molds and casting of carved piece from the workshop: *Chuck*

November - Bring a Model Night.

December - No tech session.

January 2017 - White Whale Auction.

February - Belaying pins and treenails...how-to: *Chuck*





NEW BUSINESS



On October 15th we will have a going away party for Barry Rudd, Tom McGowan, and Dennis Powell. Larry Friedlander will be hosting this catered affair at his home.

The club is very appreciative, Larry.

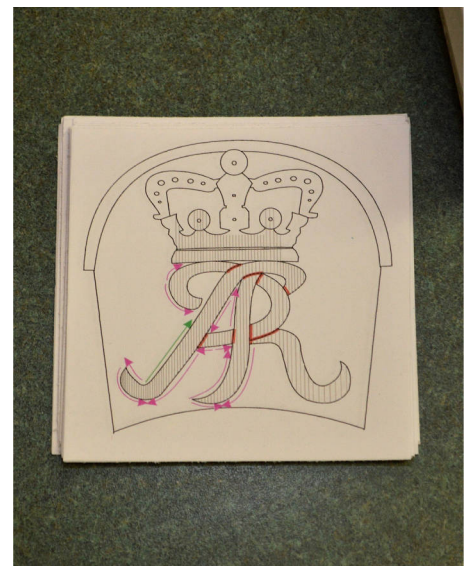
The four-masted barque [Peking](#) has left South Street Seaport. As the seaport museum's resources dwindled after Hurricane Sandy, the museum's fleet had to be slimmed down. *Peking* was purchased by the German government and will be transported to the Maritime Museum in Hamburg for restoration. In its place, the 1885 full-rigged cargo sailing vessel [Wavertree](#) will return to South Street on Saturday, September 24th.

The annual Auction is in January. President Jim notes that it takes 8 to 10 hours to do Auction Accounting. So, Auction forms will be available on the website and via email. We expect completed forms early so that in December Jim can enter them into a database. If you provide the forms, the club portion of the sale will be the standard 10%. If there is no prefilled out form the clubs percentage will be 15%.

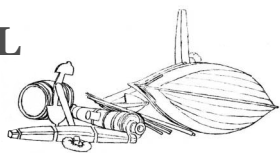
The next workshop will be at Chuck's house on September 17th for carving session II. All attendees are asked to bring \$5 to cover the material cost.

TECH SESSION

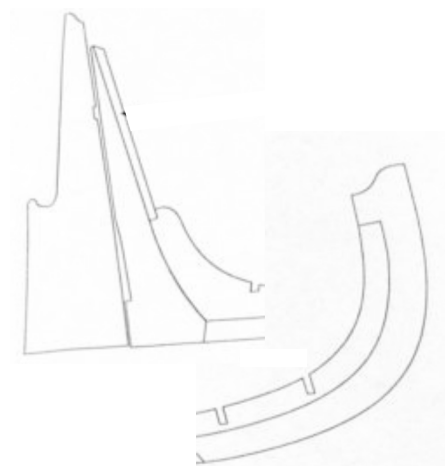
At the August meeting, **Chuck Passaro** handed out a laser cut Queen Anne monogram at 1:24 scale. The monogram is glued to a backing piece. Chuck explained miniature carving concepts as well as the importance of sequencing your carving, understanding how to carve with and across wood grain, and the use of stop cuts to prevent splitting. He explained the various cuts including the “chip cut” and two and three point cuts.



SHOW AND TELL



Jim Lavelle brought in his current project. He is test building the Queen Anne's Barge. It is a kit that is being developed by [Syren Ship Models](#) (i.e. Chuck). The Royal Barge has built up framing over a jig that is composed of floors and futtocks built upside down. When the frames bottom out in the jig, they are perfectly aligned. The next step will be to put in the first plank. The hull is clinker planked as opposed what we usually see, carvel planking. The difference is that with clinker planking the upper plank overlaps the lower plank and they are fastened to each other. Carvel planks butt against each other.



SHOW AND TELL



Mason Logie brought a miniature [Bates Mansion](#). Ozzie Thalmann and Mason will be putting in lights.

Guys – don't forget the silhouette of Norman's mother in the window!



CURRENT LIST OF MODELS COMMITTED TO THE MORRIS COUNTY LIBRARY SHOW



NAME	VESSEL	LENGTH
Chuck Passaro	Longboat	14"
Mason Logie	<i>Nina</i>	8"
	Railroad Barge	12"
Steve Maggipinto	<i>USS SC431</i>	36"
	<i>USS Indianapolis</i>	24"
Don Otis	<i>USS Confederacy</i>	40"
Tom McGowan	<i>Lightship Nantucket</i>	18"
	Oyster Barge	26"
	Sternwheeler	26"
Hans Gottschalk	<i>HMS Endeavor</i>	30"
Ozzie Thalmann	<i>USS Arizona</i>	48"
	<i>PT 109</i>	41"
	Picket Boat	32"
	Paddle Wheeler	42"
	<i>HMS Whitehall</i>	36"
Tom Ruggiero	<i>USS Wasp</i>	36"
	<i>USS Camp</i>	12"
Ken Schuetz	<i>Carrie T. Meseck</i>	16"
	River Boat	30"
	Railroad Ferry	32"
	<i>Principia</i>	28"

The Ship Model Society of New Jersey

The Broadaxe is published monthly by The Ship Model Society of New Jersey (SMSNJ), a nonprofit organization dedicated to teaching and promoting ship modeling and maritime history. Membership dues are \$25.00 for the first year and \$20.00 per year thereafter.

Visit our Web Site at:
<http://www.shipmodelsocietyofnewjersey.org> where a web version of *The Broadaxe* can be found. *The Broadaxe* is distributed by both US mail and email in PDF format.

Regular meetings are held on the fourth Tuesday of every month at 6:45 PM, at the Roseland Free Public Library, 20 Roseland Avenue, Roseland, New Jersey. Guests are always welcome.

Contributions to *The Broadaxe* are always welcome, and SMSNJ members are encouraged to participate. Articles, shop hints and news items may be submitted directly to the Editor as typed manuscript or electronic files, either on discs or by email. Handwritten notes or other materials will be considered depending on the amount of editing and preparation involved.

The Broadaxe is edited by Steve Maggipinto. Your ideas and suggestions are always welcome. Please submit them to Steve Maggipinto at Stevemagg@optonline.net.

If any member would like an email copy of the roster, please drop a note to Tom Ruggiero at the email address listed below. If there is an error in the roster let Tom know and the roster will be amended. Please make sure that your spam filter is not blocking emails from Tom because if it is, you won't get member bulletins. You can eliminate the filtering by adding Tom's email address to your contact list. Please keep the secretary informed of any changes so that the roster can be kept current. If you would like a printed copy of the roster, please send a SASE to Tom Ruggiero at the address below and one will be mailed to you. Rosters are also available at the monthly meetings.

Please keep your contact information up to date. Your email address is particularly important because that is the main avenue of communication for club announcements. In case of emergencies such as last-minute cancellations due to weather, emails will be sent to the members.

Direct All Correspondence To:

Tom Ruggiero
54 Peach Orchard Dr, East Brunswick, NJ 08816
(732) 257-6063
Email: Trugs@comcast.net

Club Officers

PRESIDENT:

Jim Lavelle
11 Red Twig Trail, Bloomingdale, NJ 07403
(973) 492-9407
E-mail: Jim@JMLavelle.com

VICE PRESIDENT:

Chuck Passaro
175 Orient Way, Rutherford, NJ 07070
(201) 507-5310
E-mail: Cpassaro@verizon.net

TREASURER:

Al Geigel
453 Second Street, Dunellen, NJ 08812
(732) 529-5147
E-mail: Algeigel@optonline.net

SECRETARY:

Tom Ruggiero
54 Peach Orchard Dr, East Brunswick, NJ 08816
(732) 257-6063
Email: Trugs@comcast.net

WEBMASTER:

Chuck Passaro
E-mail: Cpassaro@verizon.net