



Volume 34, Number 9

Newsletter of the Ship Model Society of New Jersey

September 2016

In This Issue

[Upcoming Events](#)
[Upcoming Tech Sessions](#)
[Old Business](#)
[New Business](#)
[Materials Review](#)
[Show and Tell](#)
[Club Information](#)

Our next club meeting is
October 25 at 6:45PM

ROSELAND PUBLIC
LIBRARY



America (1851)
by James Bard

SEPTEMBER NOTES...

Fare thee well, friends... At the September meeting, Larry Friedlander graciously offered to host a going away party at his house for 3 of our mates who are moving to warmer climes. Tom McGowan, Barry Rudd and Dennis Powell are packing up and going south. (**Ed Note:** Held on October 15th, the party was a smashing success. Several people who were there took photographs. Elaine, an accomplished musician and Larry's wife, played several classical and patriotic pieces with her group. Many thanks to Larry and Elaine for a most enjoyable evening and sendoff.)

Jim Lavelle was not able to attend the September meeting. In his stead, Vice President Chuck Passaro opened the session at 1845 and welcomed everyone. Present were twenty members and no guests. [Click here](#) for photos.

Al Geigel presented the Treasurer's report. The treasury is healthy. Al had to revise last month's report due to check duplication during the transition between banks and Treasurers. In any case, the problem was worked out. Al is keeping a separate accounting of each of the various estate sales in progress.

Chuck Passaro asked for comments on the "Introduction to Miniature Carving" workshop that was held on September 17th. Because the carving process is very detailed, to prepare attendees for the workshop Chuck had scheduled two separate preparatory sessions at the August meeting so everyone might have a look. Roy Goroski reported that the workshop was very well done and that he had a great time. The carving involved the Queen Anne [Royal cypher](#) that will be used in the barge kit that Chuck is designing. Chuck stated that he would like to do more Saturday sessions like this and he asked that anyone who has a topic please let us know so that we (he) can prepare a good presentation. Chuck noted that members had shown interest in painting techniques to produce clean and realistic results. He will be preparing a painting tech session for the spring.

Tom McGowan volunteered to do a presentation on the American Bureau of Shipping rating systems for both Merchant and Naval Craft. We will be adding this to the schedule for future technical sessions.

The next Saturday workshop will be held on October 22nd, at Chuck Passaro's house.

Tom, once again, offered more materials from Mike Gutsick's workshop. All the items he brought were sold.

UPCOMING EVENTS

OCTOBER

6—8 - NRG Conference, San Diego, CA
 22 - Group Working Session
 25 - Monthly Meeting - 6:45PM,
 Roseland Public Library, 1st Floor

NOVEMBER

TBD - Group Working Session
 22 - Monthly Meeting - 6:45PM,
 Roseland Public Library, 1st Floor

DECEMBER

TBD - Group Working Session
 27 - Monthly Meeting - 6:45PM,
 Roseland Public Library, 1st Floor

On the Horizon

Exhibition

December and January at the Morris
 County Library, Whippany, NJ

Joint Clubs Meeting at Annapolis

OLD BUSINESS



Morris County Library Show: December 4 through January 17, 2017. If you have been following *The Broadaxe* and the website, you know that we are still requesting models. [Steve Maggipinto](#) has been providing a signup sheet at the monthly meetings for those models that you wish to exhibit. Please fill that sheet out as soon as possible or send Steve an email with your information if you aren't able to attend the meetings. Let him know if your model is cased or uncased and the approximate model dimensions (including case, if applicable). So far, we have twenty five models committed. We would like approximately thirty five or so.

NEW BUSINESS



Mason Logie informs us that the [National Lighthouse Museum](#) would like us to reprise the exhibit that we did last year. There is interest among members although we will need to move quickly. We will be doing a weekend exhibit in November. Mason will investigate additional details.

Since Dennis Powell will be moving to North Carolina, he won't be able to set up the coffee and snacks for our breaks from that distance. Chuck P. asked for a volunteer. Larry Friedlander graciously accepted provided that the term is limited to one year. We accept Larry's offer. Thanks for stepping up, Larry.

Yes, it is early, but we will need to set up a committee for this year's Northeast Joint Clubs meeting in April. We will need to liaise with Dan Pariser and the New York Club to make certain that we have a round table speaker and that all details for the Jim Roberts Award are set up quickly and efficiently. Also, SMSNJ will be hosting the meeting in 2018. We need to plan in April 2017 to take on that responsibility. Chuck Passaro and Tom Ruggiero will be on the committee, but at least one more member is requested. Note that Al Geigel usually does this, but we are giving him a break this time. We're asking that someone else step up.



Upcoming Tech Sessions

October - Simple one piece molds and casting of the piece carved at the September workshop: *Chuck*
November - Bring a Model Night.
December - No tech session.

January 2017 - White Whale Auction.
February - Belaying pins and treenails...how-to: *Chuck*

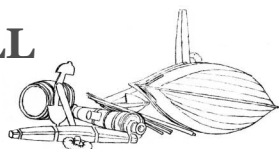
MATERIALS REVIEW



Chuck Passaro brought in several pieces of milled [Alaskan Yellow Cedar](#). It is used primarily in the South as a construction material because it is rot and insect resistant. Although it can be indented with a fingernail, it has almost no heavy graining.

Alaskan Yellow Cedar machines, sands and bends very well, and holds a very sharp edge. As an experiment, Chuck will be doing a trial kit of his barge with this wood; it looks very promising and is more economical than Castello Boxwood or Swiss Pear.

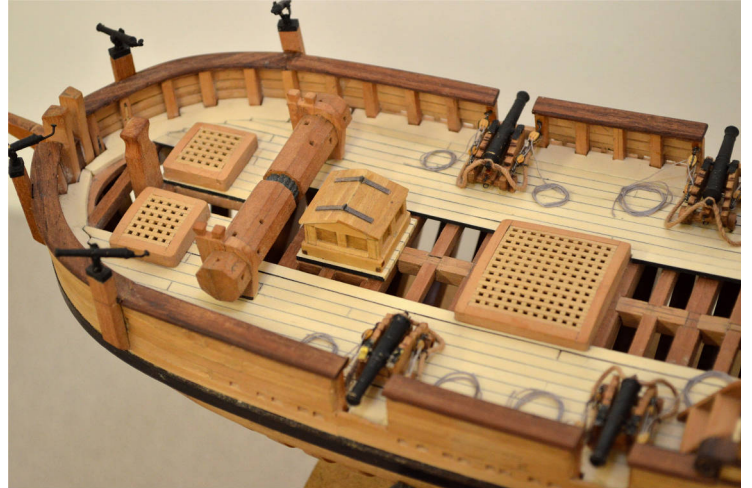
SHOW AND TELL



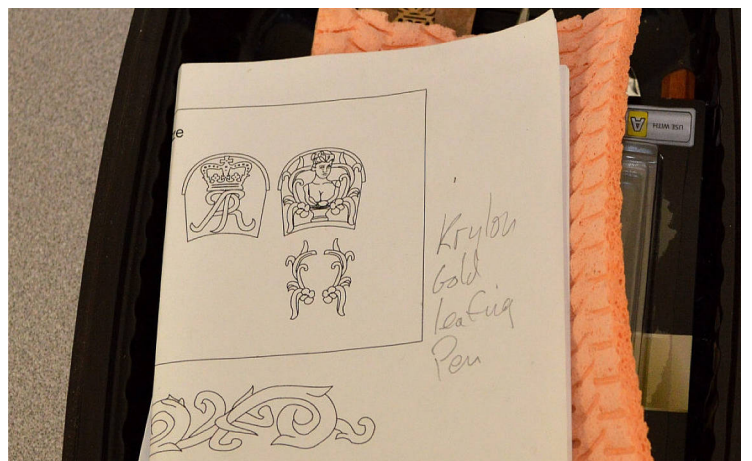
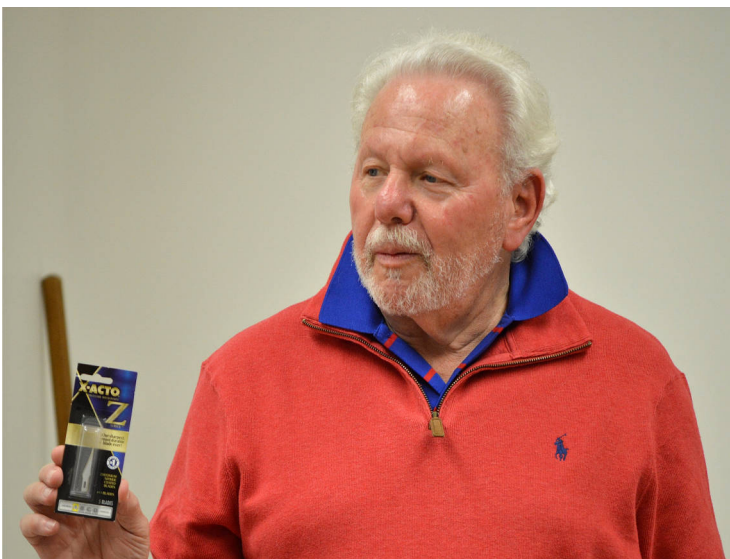
Barry Rudd showed his in-progress model of the [Hannah](#). Hannah was the first boat in Washington's Navy and was a conjectural conversion of a fishing boat of the period. This was the subject of a group build several years back and Barry intends to complete it with stub masts. Since we've last seen

Barry's model, he has added the swivel guns. He thinks that they are too black. Chuck P. suggested brush-on weathering powder. Barry will be trying that in his new shop in Florida. The powder is available from [MicroMark](#) as well as other suppliers.





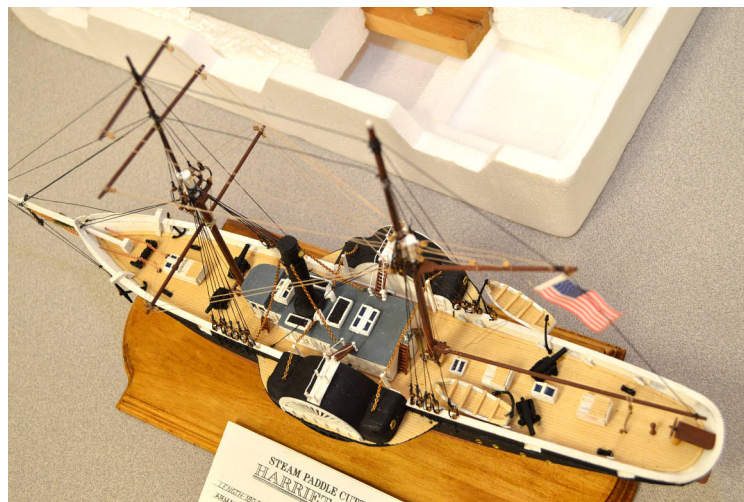
Larry Friedlander brought in the cypher and ficus leaves that he carved at Chuck's workshop. Larry stated that what you should try to achieve is variation in elevation of relief in the carving to create some movement, rather than simply rounding off the piece. He emphasized that it is important to preplan to determine where different branches and leaves rise and descend in the relief. Larry has done a great job. He has been using [X-ACTO Z blades](#). They are extremely sharp and hold their edge much longer than the standard blades. The advantage is that the Z easily slices through the grain of the wood. He also used a very small V gouge. Chuck noted that he heard from a modeler on [MSW](#) waiting for the results of this workshop to determine if he (modeler) wants to attempt the carving or go with the resin castings that Chuck plans to offer as an option. Larry also showed the microscope that he uses to help with the carving. The Z blades are available on line.



SHOW AND TELL



Don Otis discussed his model of the Civil War blockade runner, later Union paddle wheeler, [Harriet Lane](#). The model is from the old Model Shipways solid hull kit. To take a little bit of a break, Don did this right out of the box with minimum kit bashing. This kit isn't offered anymore. Barry Rudd noted that John Shedd, the late founder of Model Shipways, made the castings in metal (probably lead) and sent them to a piano leg fabricator in Brooklyn. The device the fabricator used to create the fittings was basically a carving machine that used a pantograph. Speaking of the Shedd family, Barry informs us that John Shedd's wife Catherine passed away on August 21st. She was 103. In 1945, the first ship model produced and sold by Model Shipways, the [Katy](#), was named by John Shedd for Catherine.



Mason Logie brought in a model of the [Phantom](#) and asked for assistance in building it. Don Otis offered to help Mason.



SHOW AND TELL



John Marinovich showed his very large scale (1:36) scratch built model of the schooner yacht [America](#) (1851). The prototype was designed by George Steers and built by William H. Brown for \$30,000. The model has laminated white oak ribs with teak strip planking. John has seen the original and is currently working on the cockpit and tiller. Very well done, John.



Ken Whitehead showed a tiny belaying pin that Chuck P. helped him turn at the last workshop. He started with an emery board and worked the piece into a perfect scale pin. Full size these are 18" end to end. A great job. See opposite:

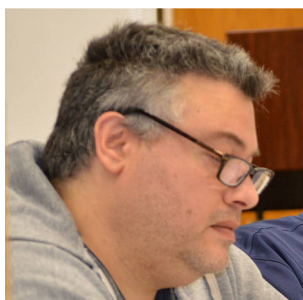
full size and (in the plastic case, practically invisible) the miniature.



SHOW AND TELL



Tom Ruggiero returned with his never ending project, *HMS Liverpool*, built in 1758 and destroyed during a storm in Long Island Sound in 1778. Since last time, Tom has completed all of the deck furniture including the helm as well as the binnacle cabinet. Tom is affixing gratings that he had fabricated years ago. The very last grating that he was placing dropped into the hull, never to be seen again. Time to make another one. Next come the masts. Tom hasn't rigged anything in a long time. This time he plans to forego installing the fighting tops until after the shrouds and stays are seated on the masthead. We'll see how it goes.



Chuck Passaro brought in the prototype of his Queen Anne Style Barge (1703). It is 1:24 scale and is quite impressive. Jim Lavelle is trial building Chuck's barge with floors and futtocks built upside down. When the frames bottom out in the jig, they are perfectly aligned.



The Ship Model Society of New Jersey

The Broadaxe is published monthly by The Ship Model Society of New Jersey (SMSNJ), a nonprofit organization dedicated to teaching and promoting ship modeling and maritime history. Membership dues are \$25.00 for the first year and \$20.00 per year thereafter.

Visit our Web Site at:
<http://www.shipmodelsocietyofnewjersey.org> where a web version of *The Broadaxe* can be found. *The Broadaxe* is distributed by both US mail and email in PDF format.

Regular meetings are held on the fourth Tuesday of every month at 6:45 PM, at the Roseland Free Public Library, 20 Roseland Avenue, Roseland, New Jersey. Guests are always welcome.

Contributions to *The Broadaxe* are always welcome, and SMSNJ members are encouraged to participate. Articles, shop hints and news items may be submitted directly to the Editor as typed manuscript or electronic files, either on discs or by email. Handwritten notes or other materials will be considered depending on the amount of editing and preparation involved.

The Broadaxe is edited by Steve Maggipinto. Your ideas and suggestions are always welcome. Please submit them to Steve Maggipinto at Stevemagg@optonline.net.

If any member would like an email copy of the roster, please drop a note to Tom Ruggiero at the email address listed below. If there is an error in the roster let Tom know and the roster will be amended. Please make sure that your spam filter is not blocking emails from Tom because if it is, you won't get member bulletins. You can eliminate the filtering by adding Tom's email address to your contact list. Please keep the secretary informed of any changes so that the roster can be kept current. If you would like a printed copy of the roster, please send a SASE to Tom Ruggiero at the address below and one will be mailed to you. Rosters are also available at the monthly meetings.

Please keep your contact information up to date. Your email address is particularly important because that is the main avenue of communication for club announcements. In case of emergencies such as last-minute cancellations due to weather, emails will be sent to the members.

Direct All Correspondence To:

Tom Ruggiero
54 Peach Orchard Dr, East Brunswick, NJ 08816
(732) 257-6063
Email: Trugs@comcast.net

Club Officers

PRESIDENT:

Jim Lavelle
11 Red Twig Trail, Bloomingdale, NJ 07403
(973) 492-9407
E-mail: Jim@JMLavelle.com

VICE PRESIDENT:

Chuck Passaro
175 Orient Way, Rutherford, NJ 07070
(201) 507-5310
E-mail: Cpassaro@verizon.net

TREASURER:

Al Geigel
453 Second Street, Dunellen, NJ 08812
(732) 529-5147
E-mail: Algeigel@optonline.net

SECRETARY:

Tom Ruggiero
54 Peach Orchard Dr, East Brunswick, NJ 08816
(732) 257-6063
Email: Trugs@comcast.net

WEBMASTER:

Chuck Passaro
E-mail: Cpassaro@verizon.net