



Volume 40, Number 12 *Newsletter of the Ship Model Society of New Jersey*

December 2022

In This Issue

- [Meeting Report](#)
- [Old Business](#)
- [New Business](#)
- [Books and Pubs](#)
- [Submarines Built in Manitowac](#)
- [National Lighthouse Museum](#)
- [Show and Tell](#)
- [Club Information](#)

Meeting Report: The meeting was opened at 7 PM by our President, Bill Brown. We had sixteen members and two guests.

Walter Figiel Model from a monastery. Recommendations on what to do with it and what age.

Tom reported on the state of our Treasury. The treasury is healthy.

The meeting adjourned at 2030.

**Upcoming Events
& Tech Sessions**

The next meeting is;
December 27, 7:00 PM (1900)
The December meeting will be a **Virtual only** meeting. In January we will meet in our normal meeting place.

Dues 2022 PAST DUE

About 10 members have still not paid their dues. Yearly dues are \$20. If you joined after November 1, 2021 you are covered for this year. Dues may be paid at the June meeting or mailed to the Treasurer. Make checks to "Ship Model Society of New Jersey".

Workshops

We are pleased to announce that Saturday Workshops are Back!
The next Saturday workshop will be in January, 2023 at 10am at Chuck's workshop. (Date to be determined). Details will be emailed.

Next Tech Session

The Tech Session the December Meeting will be a presentation by Bill Woodward about Miniature World in Staten Island.

OLD BUSINESS



No Old Business at this meeting.

NEW BUSINESS



Parsippany Library Exhibit

Ossie Thalmann has had a model display in the Parsippany Library. The Library Director of Adult Programs has asked if SMSNJ would be willing to do a demonstration in the Library that could also appeal to children and teenagers. We have done an exhibit there before, but this would be a bit more interactive. Tom Ruggiero has the contact information and will be discussing this with her after the Holidays.

think? Please let us know. Thanks!

NRG Secretary Newsletter Announcements

A benefit of being an NRG Chapter is that the SMSNJ is entitled to put announcements of other club news into the Secretary Newsletter that the NRG distributes periodically. Toni Levine, Chair of the NRG Board of Directors Chair was in attendance at the meeting and noted that this gives Chapter Clubs to advertise the activities of their Club to an huge international audience. It allows the Club to promote their speakers so as to allow them to attend as well. This is a benefit that is offered to all the Chapter Clubs.

BOOKS AND PUBS



No books or pubs this meeting.

THE NAUTICAL RESEARCH GUILD

"ADVANCING SHIP MODELING THROUGH RESEARCH"

Annual membership includes our world-renowned quarterly magazine, Nautical Research Journal, which features photographs and articles on ship model building, naval architecture, merchant and naval ship construction, maritime trade, nautical and maritime history, nautical archaeology and maritime art.

Other benefits include discounts on annual conferences, ship modeling seminars, NRG products and juried model competitions which are offered exclusively to Guild members. We hope you will consider joining our ongoing celebration of model ships and maritime history.



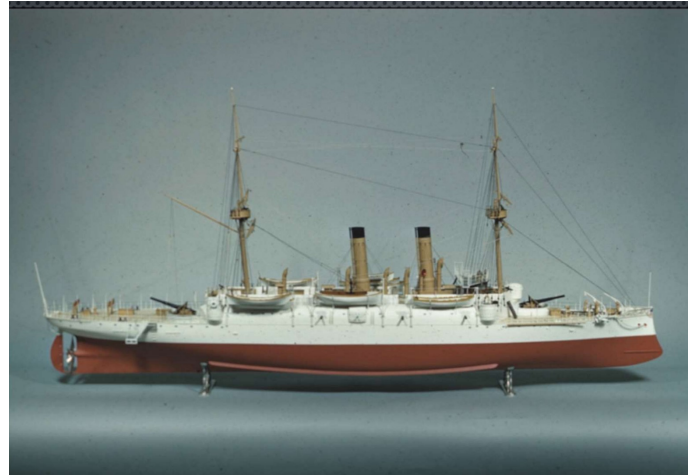
For more information contact us at: www.thenrg.org or call 585 968 8111

Technical Session

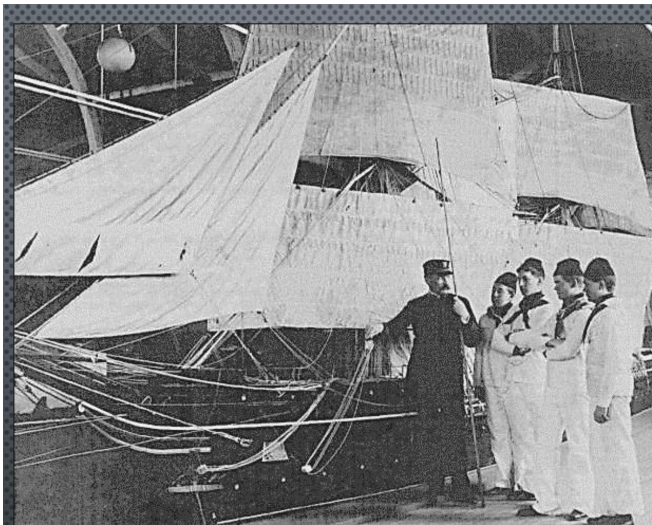
“The Navy’s Ship Model Program” presented by Jennifer Marland,

Jennifer Marland is the Assistant Curator, Office of the Curator of Models, Naval Surface Warfare Center. The United States Navy

The Navy has a collection of ship models even though it doesn’t have its own museum. Over 3,000 models are displayed in several museums throughout the United



USS Atlanta—1883 (credit NAVSEA)

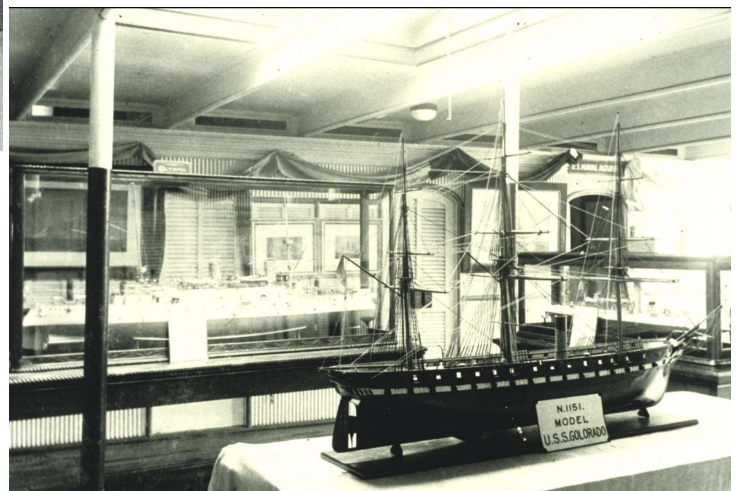


USS Antietam, Naval Academy 1904 (credit NAVSEA)

1883. Several of these models are test tank models.

The Bureau of Construction and Repair began highly detailed models. The Atlanta is the earliest the ships. Thaddeus Wilson was responsible for producing these models. He exhibited 16 models

States and in a few places outside the country. There is a three dimensional record of every different type of craft since,



Columbian Exposition, Chicago, 1893 (Credit NAVSEA)

the 1893 World Columbian Expo in Chicago. 1:48 was set as the standard. And the exhibit started the standard.



(left) Model Builders & Draftsmen

Washington Navy Yard 1898 (Credit NAVSEA)

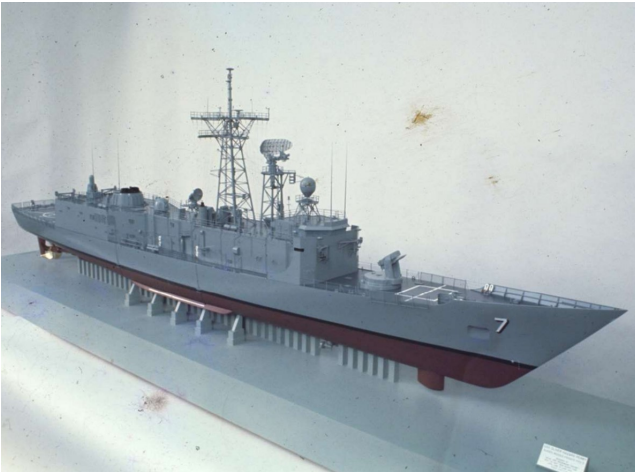
Boucher was one of the original model builders at the Navy yard and then formed the Manufacturing Company on Madison NY. One of the first companies to manufacture

Technical Session

“The Navy’s Ship Model Program” presented by Jennifer Marland,

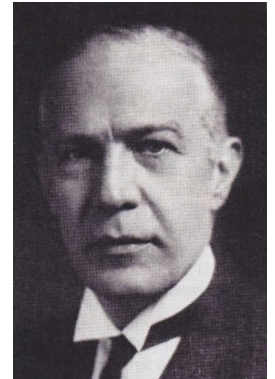
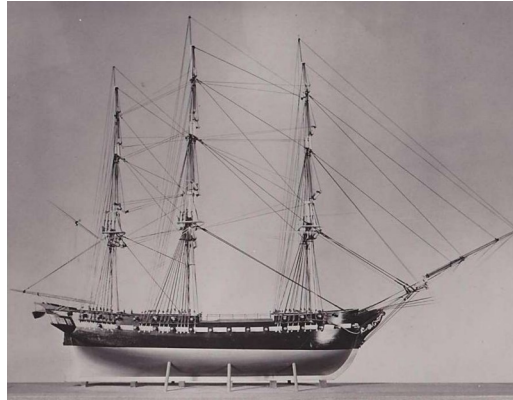
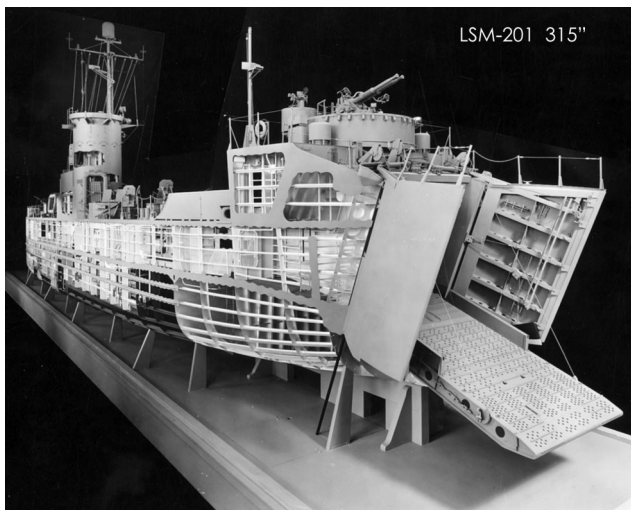
Horace Boucher, 1874-1935, was one of the original model builders at the Navy yard and then formed the Manufacturing Company on Madison NY, and one of the first companies to manufacture for the public.

William Gibbs (1886-1967) began building



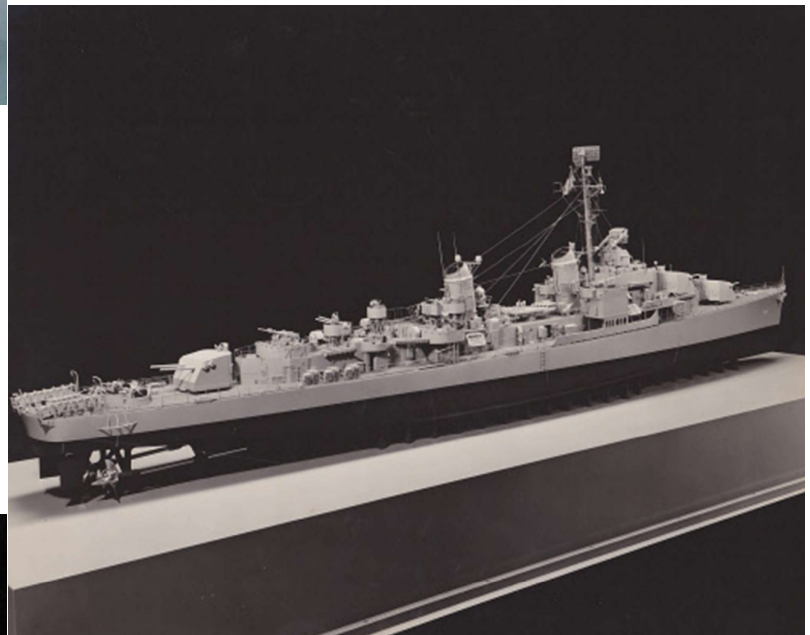
USS Oliver Hazard Perry (FFG 7) Navy’s last Boucher Co. Model 1976 (Credit NAVSEA)

Barbrack was one of them) on an entire floor in a building at 40 Rector St in Manhattan. 30 full exhibition models were produced. The Gearing required 16,503 man-hours to build.



USS Constitution, Boucher Model Company, 1922 (Credit NAVSEA)

models for the Navy, The models were used for working out some designs. The Gibbs and Cox Company employed 160 model builders during World War II (past member Henry



USS Gearing (DD-710) Model by Gibbs & Cox 1948 (Credit NAVSEA)

The model of LSM-1 is 1.5” to the foot (1/8 of full size), entirely from brass. This model had to be removed from the building by crane through a window. Gibbs and Cox received \$1.5 million for this model in 1943, the actual ship cost only half a million more. It is possibly the most expensive model built.

LSM-1 (credit NAVSEA)

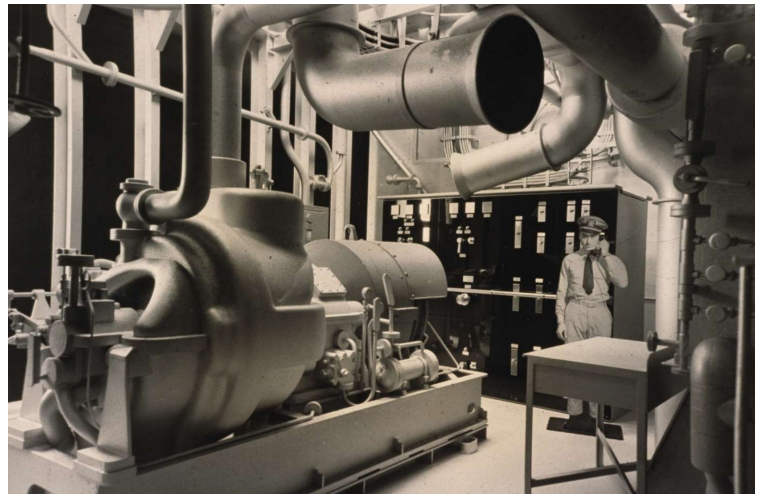
Technical Session

“The Navy’s Ship Model Program” presented by Jennifer Marland,

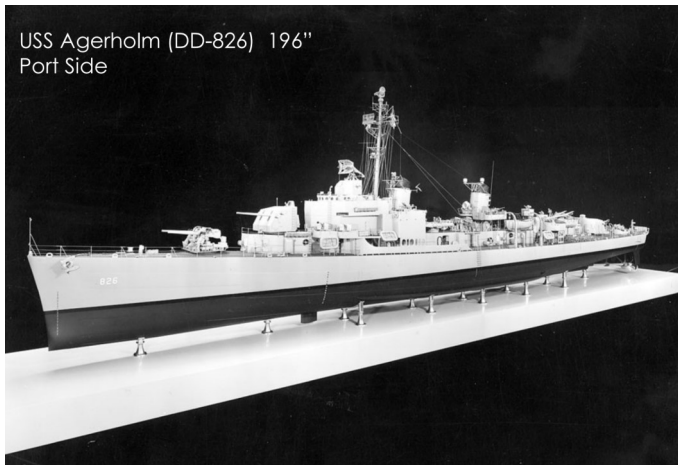
LSM-1 Model (all photos Credit NAVSEA)



LSM-201 315"
Penn Station NYC, 1948



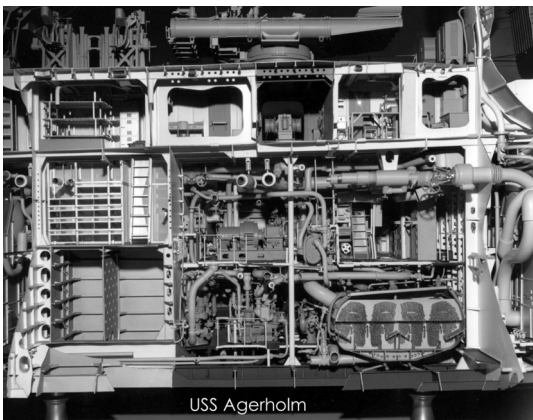
Note that the figure is nine inches tall. Another cut away model built by Gibbs and Cox is the USS Agerholm.



USS Agerholm (DD-826) 196"
Port Side



USS Agerholm
Starboard Side



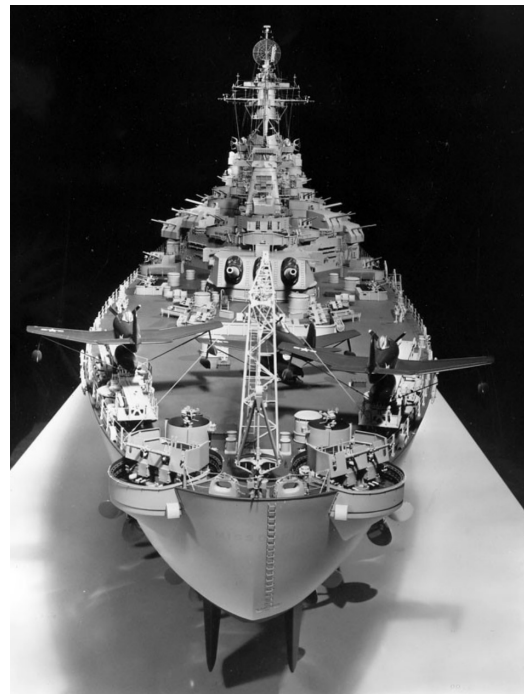
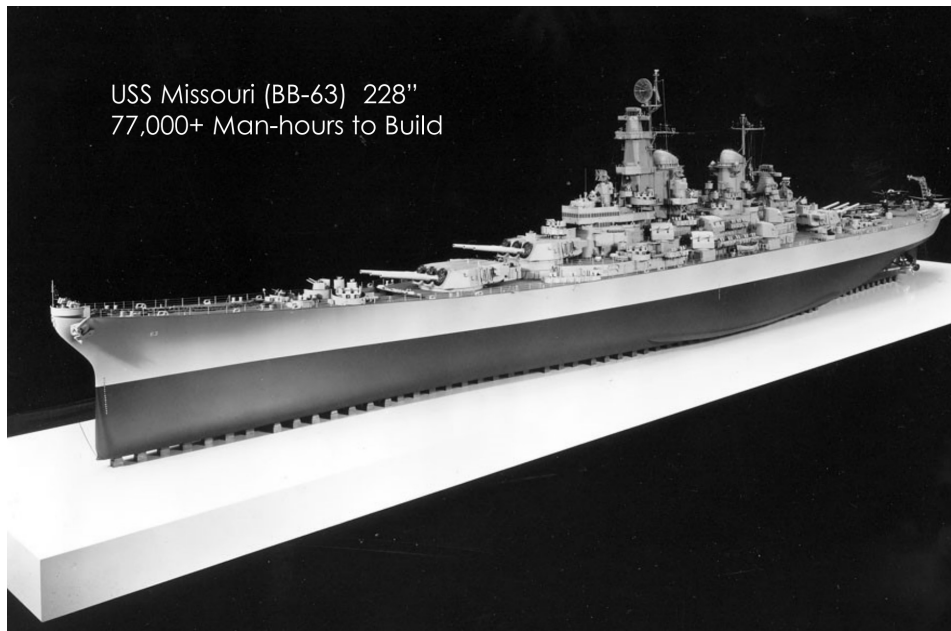
USS Agerholm

All photos Credit NAVSEA

Technical Session

“The Navy’s Ship Model Program” presented by Jennifer Marland,

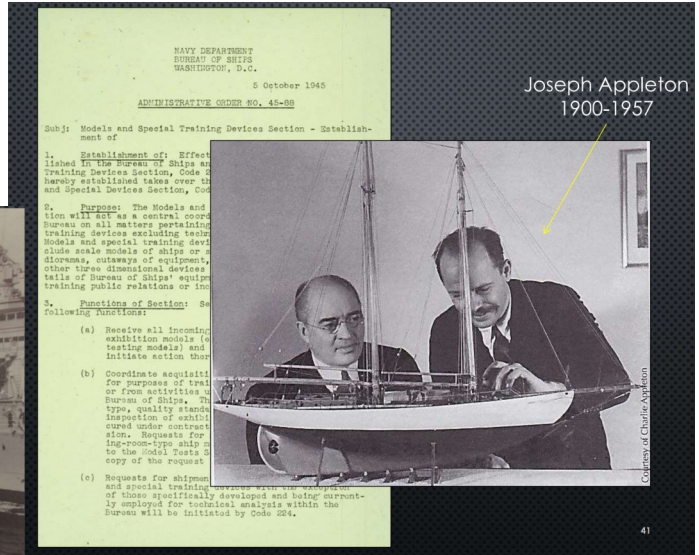
No discussion of these models would be complete without USS Missouri. (Henry Barbrack was on the team that built this model ed.)



USS Missouri (all photos Credit NAVSEA)

“The Navy’s Ship Model Program” presented by Jennifer Marland,
Technical Session

The models were kept by the Navy in the same area where their test tanks were located but it was realized that the humidity was not a good thing for the exhibition models. So, the loan program began starting during World War II. The first curator was Joseph Appleton.



USS Newport News Installed in a Museum

(Credit NAVSEA)

The Navy has a large collection of recognition models as well. Jennifer notes that they typically have the class leader of each ship and that it is not necessarily the same as the as-built ship.

The loan program continues to various museums and other venues in the USA as well as in other countries.

The SMSNJ thanks Jennifer for this excellent presentation of this sometimes unknown collection of beautiful work.



Installing USS Helena (CA-75) Great Lakes, IL (Credit NAVSEA)

An Important Anniversary

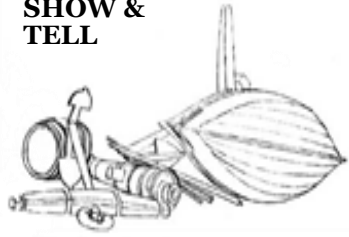


US Army Cpl. Oswald Thalmann (right) and Cpl. Rudi Tappeiner (center) November 28, 1953 Being sworn in as citizens of the United States. Both Rudi and Ossi served in the Korean War 1951-1953 and were honorable discharged on December 24, 1959.

Member Ossi Thalmann walked out of East Germany to West Germany with his brother. They both emigrated to the United States. Ossi was told that if he joined the Army it would be a quick path to citizenship. Congratulations Ossi!

The Broadaxe

SHOW & TELL



Nina, Spanish, 1492

Lindberg Kit, Scale 1:75

Mason Logie

Mason brought in this model of the Nina. The model is a plastic kit and Mason has been finishing the hull with some weathering. Masting and rigging is next.

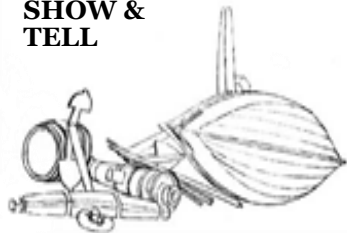


is a



The Broadaxe

SHOW & TELL



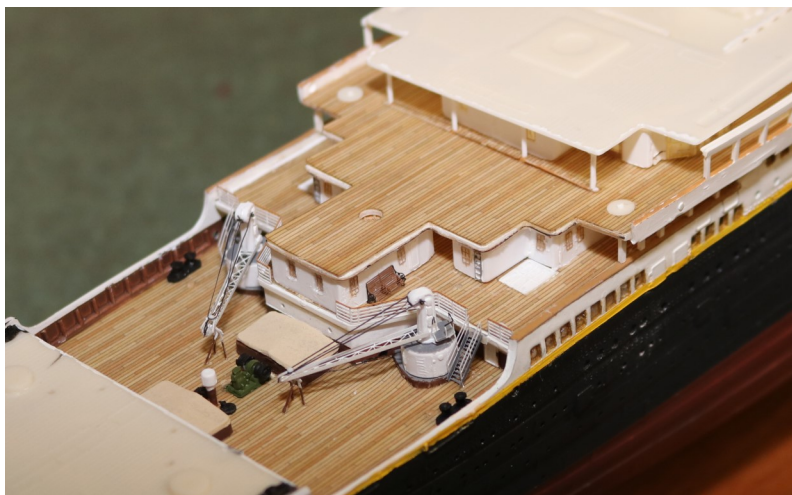
RMS Titanic

British Ocean Liner 1912

Scale 1:350, Minicraft Kit

Tom Ruggiero

Tom brought in his continuing project. Since last time he installed the cargo cranes on the Fore and Aft Well Decks. The booms for the cranes are photoetch from Tom's Model Works. Each crane has the main hook and traversing cables. C Deck was completed, and the Promenade Deck was installed. The Boat Deck is trial fitted and

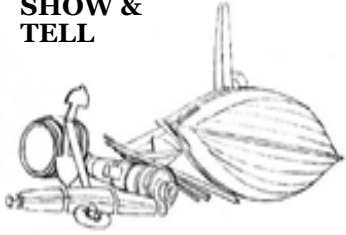


Tom notes that fit up is a challenge because the minor variations in the lower decks and bulkheads stack up as you put them on top of each other. Tom notes that there is a tremendous amount of information online for this particular kit. In addition to a very detailed book on a 1:96 Titanic Model, the two websites he uses are Rivet Counter <http://www.rivet-counter.com/> and <http://www.titanicmodel.net/> The second site is a log of a beautiful and lighted model by Art Braunschweiger. The model is based on the same kit and depicts Titanic dockside in Cherbourg, France. It was the final land fall before she sank.



The Broadaxe

SHOW & TELL



Mayflower (1620)

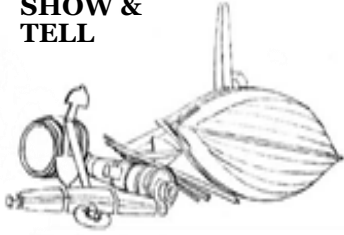
Walter Figiel

Walter attended his first meeting to show us this model that he has asked Bill to restore for him. The model is quite old and was in the possession of a friend of Walter. The model was in a Monastery. Walter is asking for advice on what the depicted ship represents as well as what degree of repair or restoration should be performed. After some discussion, member Don Kieffer determined, from the flags, that it was **Mayflower**. Bill opined that it may have been a model that was suspended above the altar in a church.



The Broadaxe

SHOW & TELL



HMS Victory, English 1st Rate,
Scale 1:72, Modified Caldercraft Kit
(54 x 21 x 37 inches)

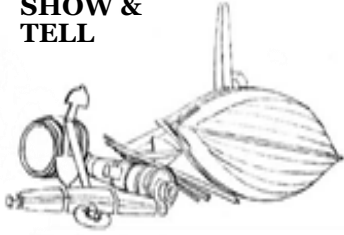
- Mort Stoll

Mort is continuing with the ship's boats. They're plank on frame builds; very delicate and challenging. We have confidence in you, Mort.



The Broadaxe

SHOW & TELL



HMS Thorn, English 6th rate

Scale 1:48

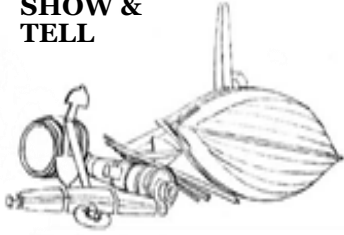
Kevin Kenny

Kevin is making excellent progress with pintles and gudgeons to hang the rudder. He has been silver soldering and his thread at Model Ship World includes a video about the process. Very well done.



The Broadaxe

SHOW &
TELL



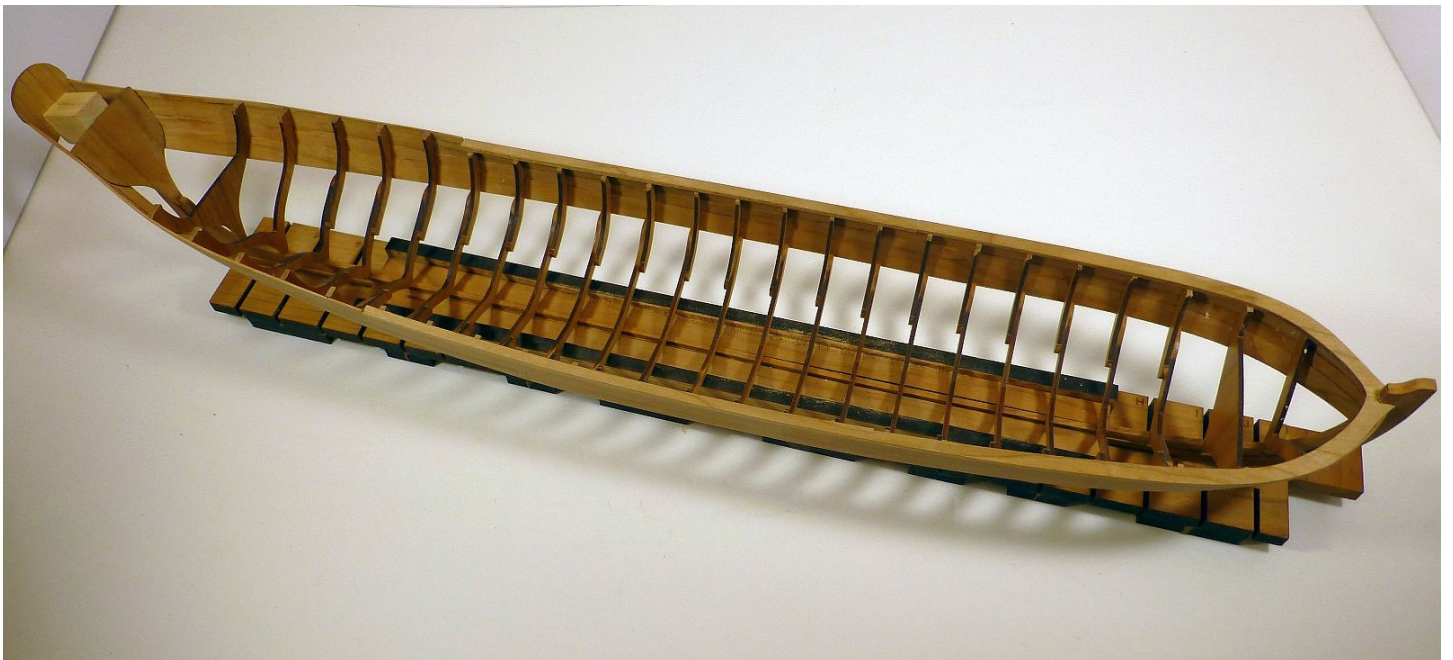
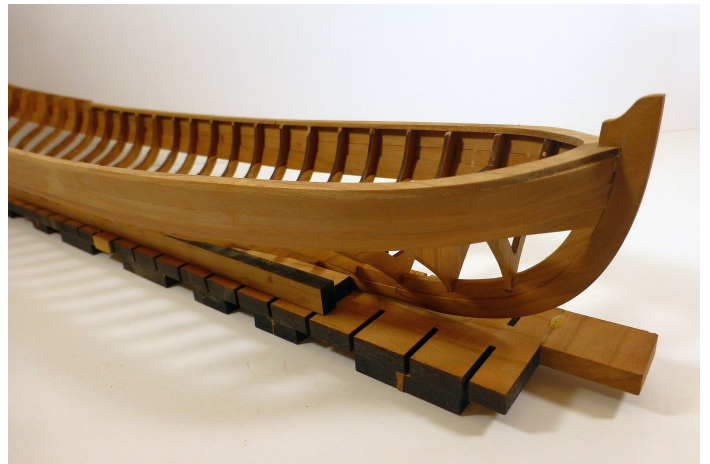
Queen Anne Style Royal Barge

1705, Scale 1:24

Syren Ship Model

Ryland Craze

Queen Anne Style Royal Barge, a 1:24 scale model kit from Syren Ship Model Company designed by Chuck Passaro. I have installed the forward cap rail and started thinning them down to a thickness of 5/64". Progress is slow as the frames are very fragile. Coming along great Ryland.



The Ship Model Society of New Jersey



The Broadaxe is published monthly by The Ship Model Society of New Jersey (SMSNJ), a nonprofit organization dedicated to teaching and promoting ship modeling and maritime history. Membership dues are

\$25.00 for the first year and \$20.00 per year thereafter.

Visit our Web Site at: <http://www.shipmodelsocietyofnewjersey.org> where a web version of *The Broadaxe* can be found. *The Broadaxe* is distributed each month by email in PDF format.

Regular meetings are held on the fourth Tuesday of every month at 6:45 PM, at the Roseland Free Public Library, 20 Roseland Avenue, Roseland, New Jersey. Guests are always welcome.

Contributions to *The Broadaxe* are always welcome, and SMSNJ members are encouraged to participate. Articles, shop hints and news items may be submitted directly to the Editor as typed manuscript or electronic files, either on discs or by email. Handwritten notes or other materials will be considered depending on the amount of editing and preparation involved.

The Broadaxe is edited by Tom Ruggiero. Your ideas and suggestions are always welcome. Please submit them to Steve Maggipinto at trugs@comcast.net.

If any member would like an email copy of the roster, please drop a note to Tom Ruggiero at the email address listed below. If there is an error in the roster let Tom know and the roster will be amended. Please make sure that your spam filter is not blocking emails from Tom because if it is, you won't get member bulletins. Please keep your contact information up to date. Your email address is particularly important because that is the main avenue of communication for club announcements. In case of emergencies such as last-minute cancellations due to weather, emails will be sent to the members. Direct All Correspondence to Tom Ruggiero.

Club Officers

PRESIDENT:
Bill Brown
28 Betsy Ross Drive
Allentown, NJ 08501 (732) 294-8960
E-mail: wldjbrown@gmail.com

VICE PRESIDENT:
Mason Logie
20 Sylva Lane
Staten Island, NY 10305 (718) 273-1813
E-mail: mlogiejr@aol.com

SECRETARY/TREASURER:
Tom Ruggiero
54 Peach Orchard Dr
East Brunswick, NJ 08816 (732) 257-6063
Email: trugs@comcast.net

WEBSITE CONTACT:
Chuck Passaro
E-mail: cpassaro123@gmail.com