



Volume 41, Number 3

# Newsletter of the Ship Model Society of New Jersey

March 2023

## In This Issue

- [Meeting Report](#)
- [Old Business](#)
- [New Business](#)
- [Books and Pubs](#)
- [Tech Session](#)
- [Miniature World](#)
- [Show and Tell](#)
- [Cool Tool](#)
- [Club Information](#)

**Meeting Report:** The meeting was opened at 7 PM by our President, Bill Brown. We had twenty members present. Tom reported on the state of our Treasury.

Pat O'Hare decided to add sails to his model of Bluenose. We saw photographs of the model before she had sails and the consensus was that the model looks better with the sails.

The meeting adjourned at 2045.

## Upcoming Events & Tech Sessions

- The next meeting is;
- March 28, 7:00 PM (1900) in the Roseland Library.
- April 30, 2023 40th Annual Northeast Joint Clubs, New London, CT.
- June 3, 2023 Pennsville Farm Show Exhibit with the Philadelphia Ship Model Society

## Club Officer Nominations

Bill and Mason's second terms will end this June. We ask for nominations for both offices. If you wish to be considered for one of these positions, please let Bill or

## Workshops

The next Saturday workshop is TBD

## Next Tech Session

The Tech Session the March Meeting is "Tool Sharpening" with Eric Marshall.

# The Broadaxe

## OLD BUSINESS



### 40th Northeast Joint Clubs

Registration is open for this years meeting hosted by the New York Shipcraft Guild. An email was sent out distributing the forms. Make your reservations now for the lowest price.

The planned speaker is Kroum Batchvarov, PhD., maritime archaeologist, historian, and professor at the University of Connecticut. He will entertain us with tales of his work on some of the ancient wrecks that are being discovered in the Black Sea. We may also have a special ship modeling speaker.

Vendors will include Bluejacket Shipcrafters, Train-Troll models and supplies and Seawatch Books. Several others who cannot attend have donated welcome gifts for each attendee, catalogs, flyers, and numerous raffle prizes.

The raffle will also feature door prizes from each club, a new kit from Bluejacket, and there will be a special super prize of significant value. We'll keep it a secret for now.

Of course there will be tabletop demonstrations of modeling tips and techniques presented by master modelers from each club.

All of the clubs will conduct a short Round Table presentation. We ask one of you the volunteer. Contact Bill Brown if you are interested.

## Club Officer Nominations

Bill and Mason's second terms will end this June. We ask for nominations for both offices. If you wish to be considered for one of these positions, please let Bill or Tom Ruggiero know.

## NEW BUSINESS



### Auction and Adds

We haven't had an auction in quite some time. We have found that the auctions have many more sellers than buyers and not much gets moved. It was decided that if you have something that you want to part with, it can be listed in the Broadaxe. The intent is that this puts a buyer in contact with a seller. If you have something you want to part with, details must be sent to the Broadaxe editor two weeks before that months meeting.

## BOOKS AND PUBS



No books or pubs this meeting.

## THE NAUTICAL RESEARCH GUILD

"ADVANCING SHIP MODELING THROUGH RESEARCH"

Annual membership includes our world-renowned quarterly magazine, Nautical Research Journal, which features photographs and articles on ship model building, naval architecture, merchant and naval ship construction, maritime trade, nautical and maritime history, nautical archaeology and maritime art.

Other benefits include discounts on annual conferences, ship modeling seminars, NRG products and juried model competitions which are offered exclusively to Guild members. We hope you will consider joining our ongoing celebration of model ships and maritime history.



For more information contact us at: [www.thenrg.org](http://www.thenrg.org) or call 585 968 8111

**“Enhancing and Accurizing Ship Models ”  
by Tom Ruggiero**

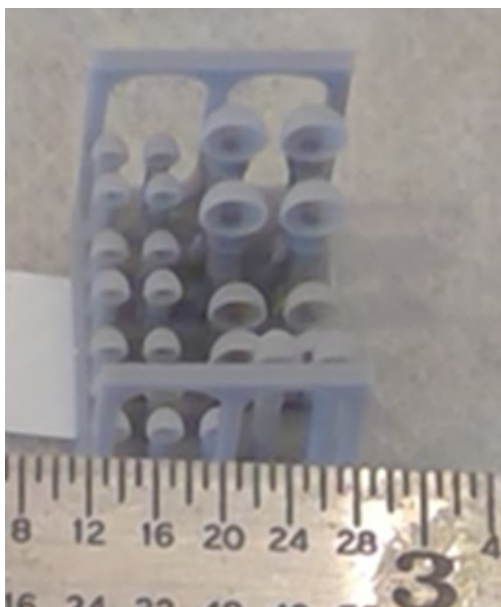
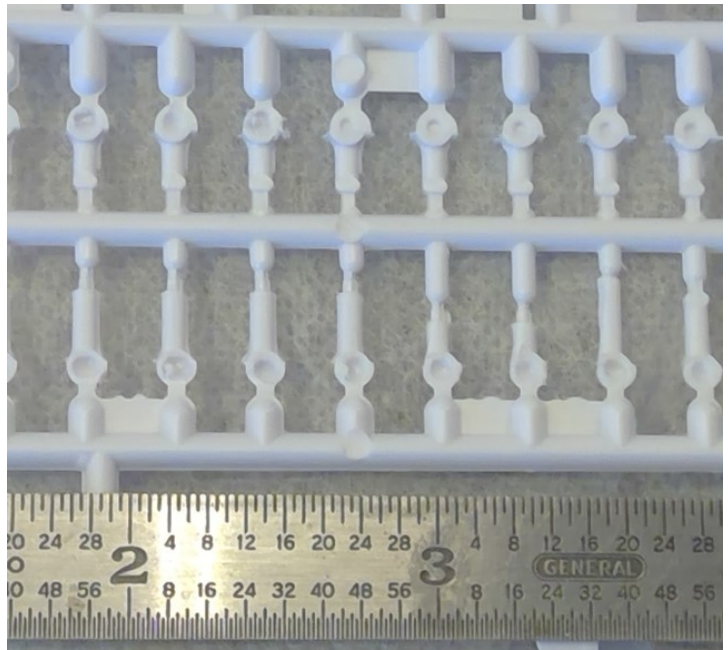
**Technical Session**

Tom Ruggiero has been working on a 1:350 Titanic. Tonight, he presented how he plans to use 3D printed parts as well as photoetch on the model. He noted that plastic castings have limitations. Very thin castings are impossible to cast, square edges are more difficult the thicker the casting (in general, the bulkheads have a radius top and bottom that needed to be squared up). The availability and increased quality of 3D printing has great potential. While you can get custom prints can be made from your artwork (as Bill Brown presented in a prior Tech Session), ready made models are now readily available, some from the original plans of the ship. The parts are expensive but as with LED TVs, he expects that prices will come down somewhat as the process matures.

Here are the kit castings for the cowl vents. The scale is 1:350. They measure roughly; Trunk Diameter 0.085”; Cowl Diameter 0.138. All of them are about the same. Additionally, many of the trunks look oval rather than cylindrical. You could clean them up, but at this size it would be very tough to clean out the cowl consistently, time intensive, and they would still be way oversize, too thick, and all the same. Here is a comparison of the kit casting sizes versus some of what would be required:

Kit Castings; Trunk Diameter 0.085”; Cowl Diameter 0.138. All of them are about the same. Additionally, many of the trunks look oval rather than cylindrical. Required sizes:

Overall Height	Trunk Diameter	Cowl Diameter	Centerline to end
0.343	0.055	0.132	0.062
0.230	0.036	0.091	0.048
0.230	0.047	0.099	0.055
0.291	0.049	0.099	0.055
0.302	0.055	0.121	0.066



The kit castings for the cowl vents are generally all the same size and way oversize. Note lots of mold flash and a very thick cross section.

On the left are the 3D printed parts. The differences are obvious. The thickness of the vent is accurate and the trunk, for the larger vents, is hollow. You can't achieve this with a casting and scratch building at this scale would be near impossible.

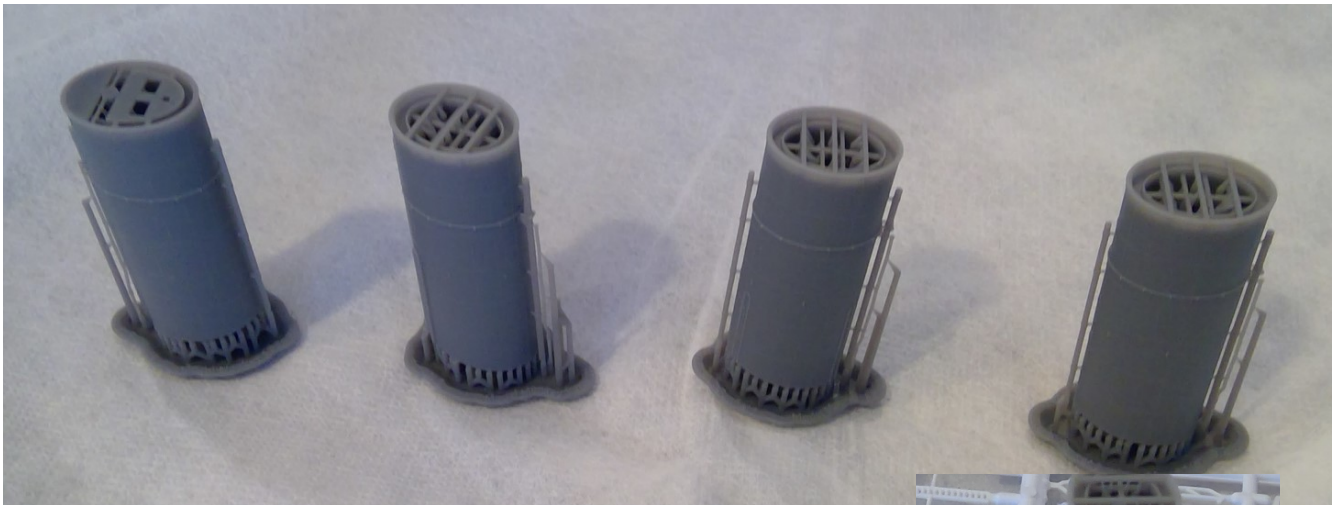
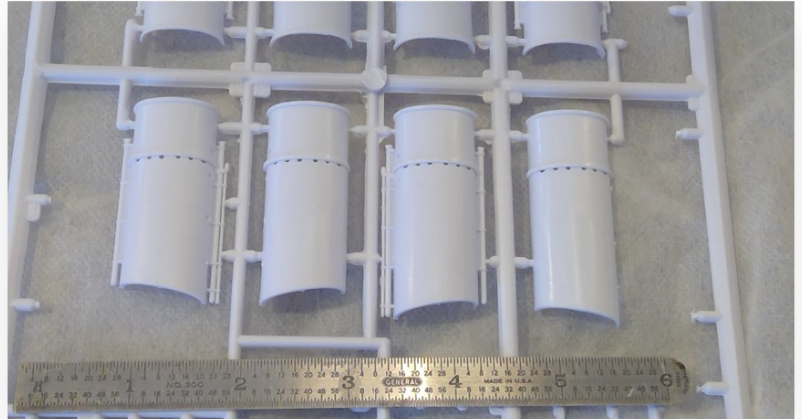


**“Enhancing and Accurizing Ship Models”  
by Tom Ruggiero**

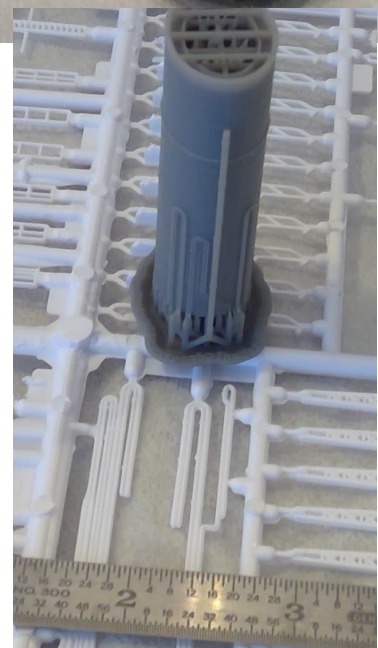
**Technical Session**

Here is what is supplied in the kit for the four funnels. Note that the funnels themselves have little detail. Also, there are oversized holes to thread through the twelve stays that are required on the funnels. Note that the pipes running up the fore side are thick with lots of mold flashing that would need to be cleaned away. Also, piping that runs from funnel 3 to the Tank room is not included on the casting.

Below are 3D printed funnels. They were printed using the actual builders drawings. They are complete and have panel lines and rivets. They are complete except for the fore side ladders that will be added with photoetch. Note that the piping is to scale. The risers attached to those pipes will be removed. Those risers are needed as part of the 3D process.



On the right is the 3D printed funnel 3. Funnel 3 had several pipe drains and loops running down the aft side that continue to the Tank Room. The piping on the funnel is included on the printed funnel. The piping to the Tank room will be made of brass wire. Also shown are the cast parts supplied in the kit. Note that they are way oversize.

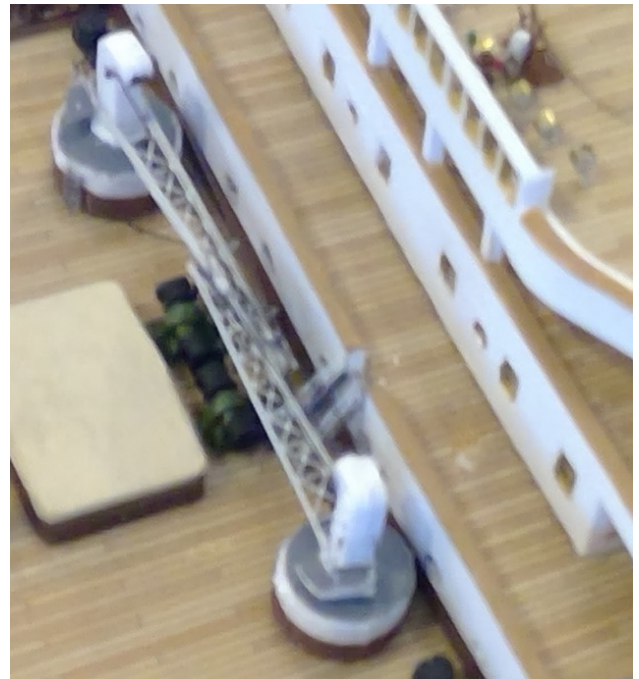
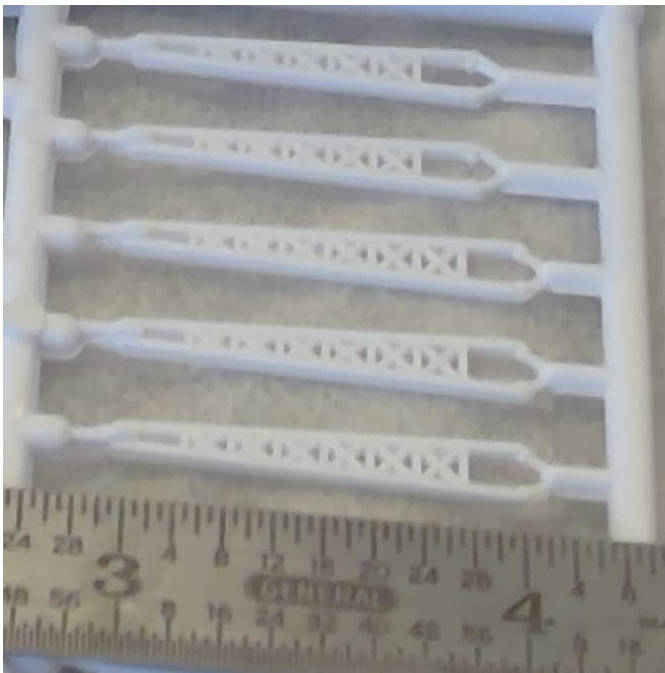




## Technical Session

“Enhancing and Accurizing Ship Models ”  
by Tom Ruggiero

Photoetch looks better than a bad casting, however round cross section in photoetch is generally not possible. In larger scales the prototype part needs to be flat although railings and such in smaller scales are okay. In larger scales, scroll work can be made more prototypical if it is topped with gesso to give the impression of a curved surface. For structures in large scales consider 3D printing or building it scratch. Here is a comparison of crane booms that are photoetched parts versus casting. Note the very thick cross bracing and all the flash that needs to be cleaned away in the cast parts. The photoetch is to scale.



Here are a few places where you can source ready made 3D parts and sources for photo-etch.

### 3D Printing

Model Monkey [www.model-monkey.com](http://www.model-monkey.com)

Shapeways [www.shapeways.com](http://www.shapeways.com)

Starling Models <https://starling-models.co.uk>

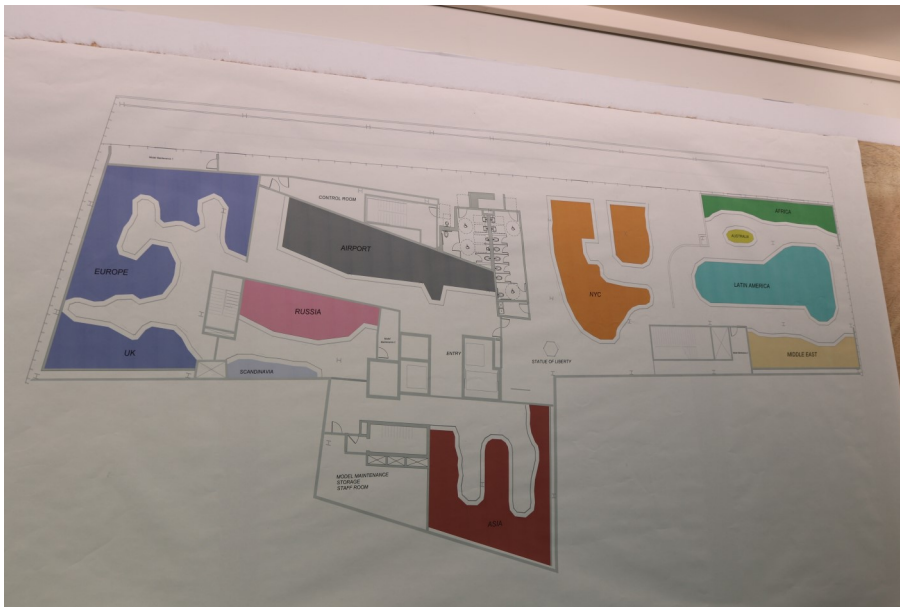
### Photoetch

Toms Model Works [www.tomsmodelworks.com](http://www.tomsmodelworks.com)

Gold Medal Models [www.goldmm.com](http://www.goldmm.com)

## Miniature World Visit

The Tech Session in January was a presentation by Bill Woodward of Miniature World, formerly Gulliver's Gate. On March 11, 2023, we were invited to a behind the scenes tour of the workshops and storage area for Miniature World. The workshop is in a former store in the Empire Outlets Mall in Staten Island, that has been converted into a workshop to do the architectural modeling and improve the buildings on the model of Manhattan. Since the new space is smaller and configured differently, most of the models need to be rebuilt, at least in part. The Manhattan model is now split so that you can walk through the model. Additionally, there are water features of both the Hudson and East River as well as the Upper Bay. There are HO Ships that move through the water features and there is an underwater drive feature to move them. The water feature is sixteen inches wide and one hundred feet long with five drive loops to move the boats. The new Miniature World will occupy an are on the top floor of the mall (20,000 sq ft) that faces out to the Upper New York Bay overlooking Lower Manhattan and Brooklyn.



The model will be divided into sections where each section is an area of the world. Unlike Gulliver's gate, the model of Manhattan will allow you to walk into the display with model on all sides.

The different areas of the model were literally built all over the world. Manhattan

was built in Brooklyn. The New England model was built by Steven Lamb in Massachusetts. Europe and the UK was built in Italy. Russia was built in St Petersburg. Asia was built in Beijing. Latin America was built in Buenos Aries by a family and fifty other people. Because of the high quality, that family was hired to build of portion of Miniature Wonderland in Hamburg, Germany. There was a model of the Middle East built in Jerusalem.

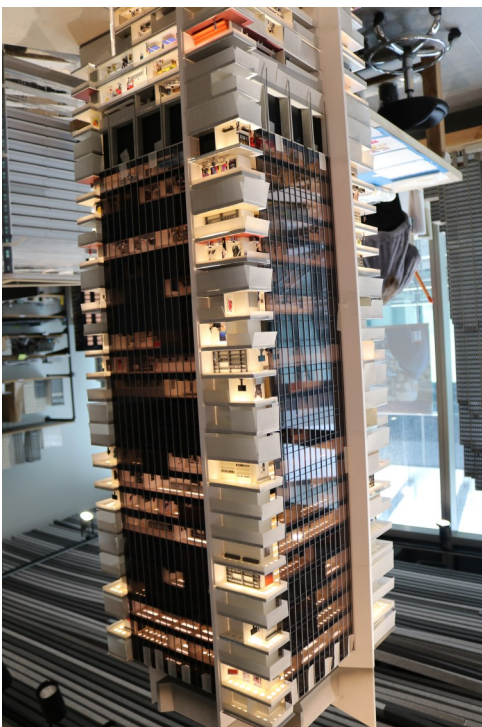
## Miniature World Visit

Some of the models include liquid waterways with moving ships including and operating model of the Panama Canal. In the Manhattan model, automobiles will run on roadways. The system will have cars with an electro magnet guided along the roadway by a small wire within the roadbed.

One of these animations will be a Fireboat responding to an emergency. There will be water pools with dyed water so the bottom isn't visible. All of this will be HO scale. The Latin America model includes and operating Panama Canal with a 36" long Container Ship.

Bill believes that even though it is a smaller exhibit it is a much better exhibit including rural England and the Netherlands including water canals and the Thames. As you can see from the photos on this page, a modern tower includes lighting of various apartments and rooms of apartments. The lighted rooms include figures and furniture and some subdued lighting rooms will have a flickering blue light to suggest that the occupants are watching television.

The circuitry and logic for all of these moving displays is, in a word, incredible. Also not the lineup of 3D printers.

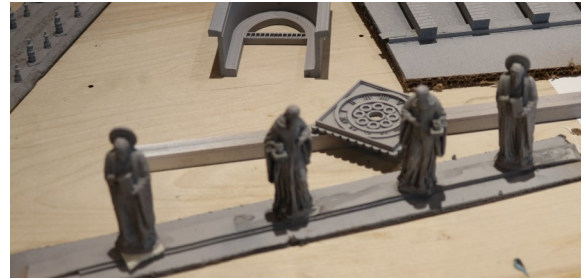


Apartment Tower (left)  
Light apartments (top left &  
right)

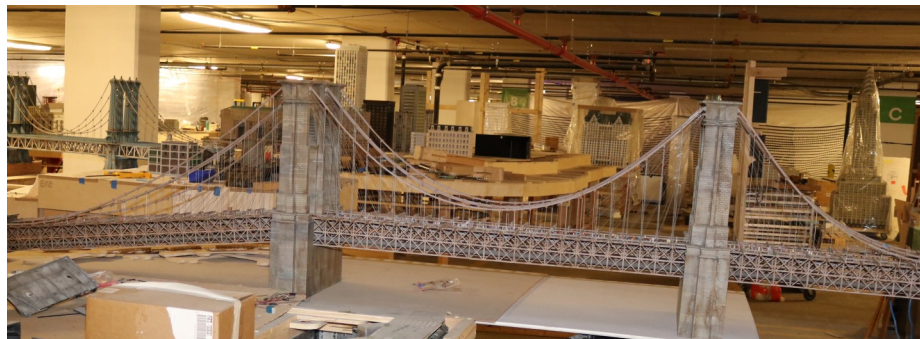




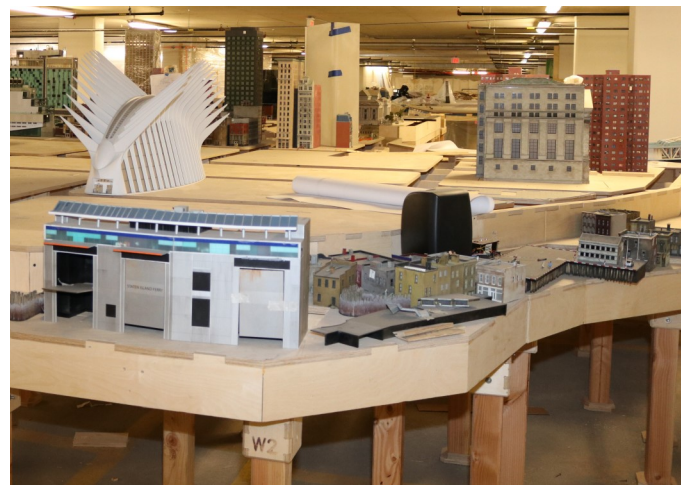
# Miniature World Visit



3D printed parts for Trinity Church (left) Statues for the church (right) Brooklyn Bridge (below)

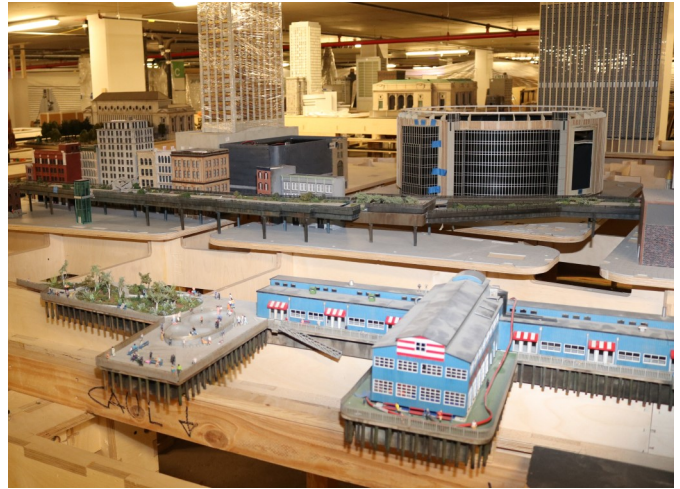
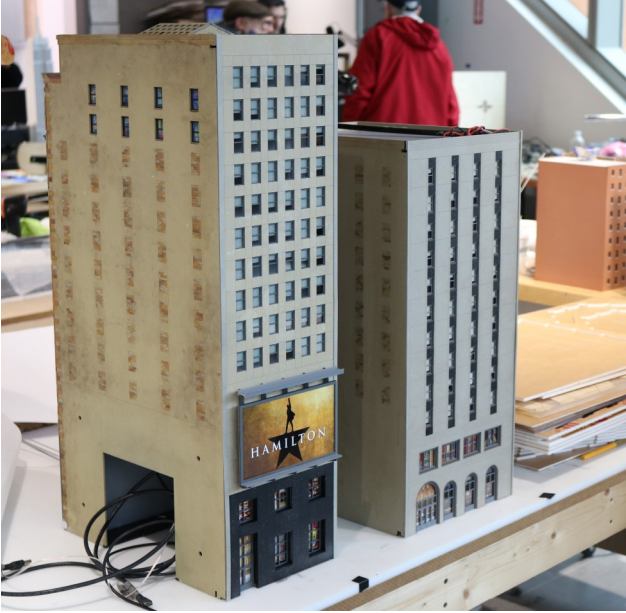


New York Library on 5th Avenue

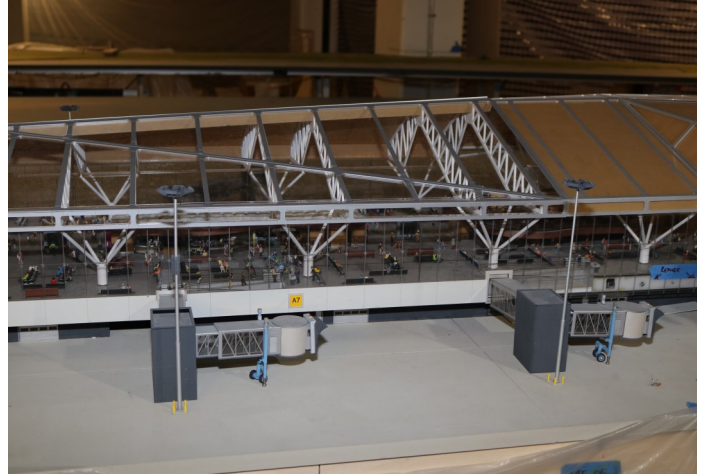




## Miniature World Visit



West side piers and Madison Square Garden (above) The 60 foot long airport runway (left below) and Terminal (right below) Train depot (bottom)





## Miniature World Visit



Italy Tower of Pisa and Coliseum  
(above left) Big Ben (above right)  
Red Square (left)

Panama Canal (below) showing  
the mechanism for operation of  
the model

As model builders, we can spend a good deal of time exploring the detail of each of the buildings and settings as well as marveling at the technology that makes the models come alive. Thank you Bill for the fantastic Tour. We look forward to seeing this beautiful exhibit and wish you all success.





## Miniature World Visit



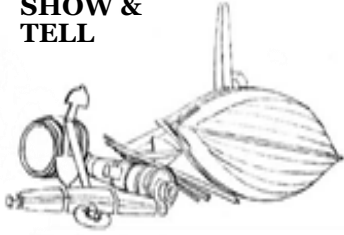
Middle East model showing the stacked Styrofoam structure for Temple Mount.





# The Broadaxe

SHOW & TELL



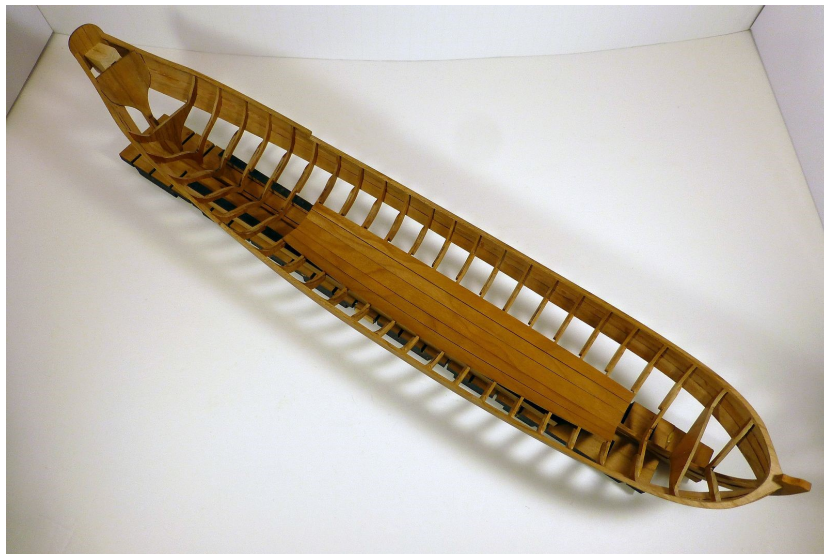
## Queen Anne Style Royal Barge

1705, Scale 1:24

## Syren Ship Model

Ryland Craze

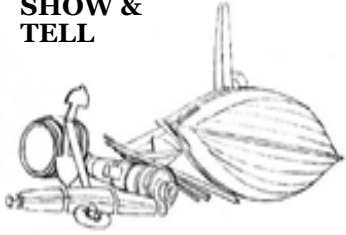
Queen Anne Style Royal Barge, a 1:24 scale model kit from Syren Ship Model Company designed by Chuck Passaro. He has finished thinning down of the frames and cap rail and is starting to work on the interior details of the model. On the right is the relief carving for the stern. Coming along great Ryland.





# The Broadaxe

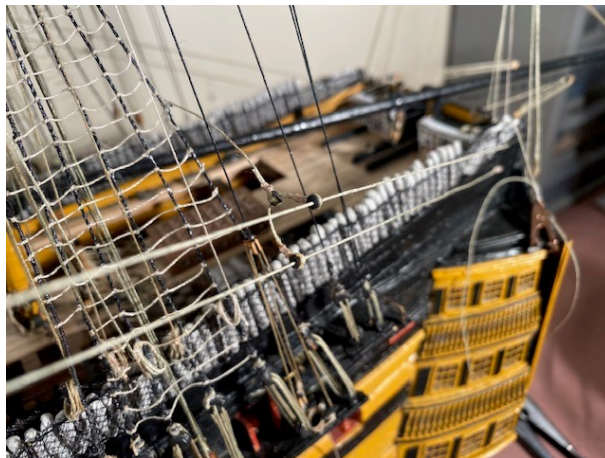
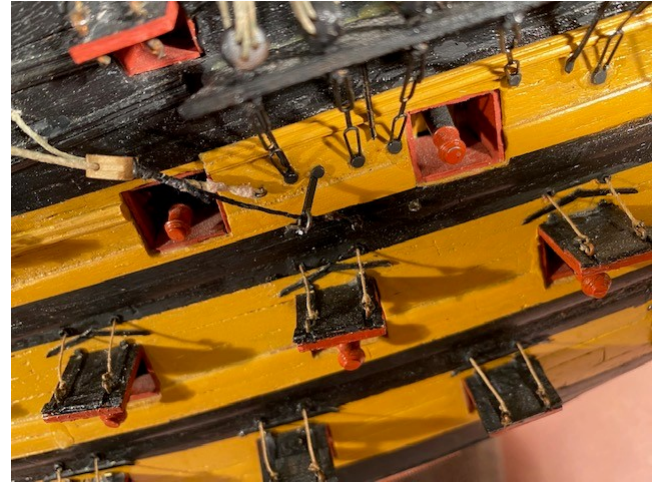
SHOW & TELL



HMS Victory, English 1st Rate,  
Scale 1:72, Modified Caldercraft Kit  
(54 x 21 x 37 inches)

- Mort Stoll

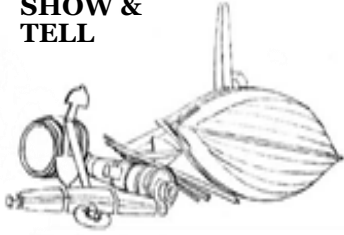
Mort finished rigging Victory. Here are photos of the stern, main sheets and spider and main braces and lizard. Next it's onto the quarter davits. Excellent Mort.





# The Broadaxe

SHOW & TELL



## RMS Titanic

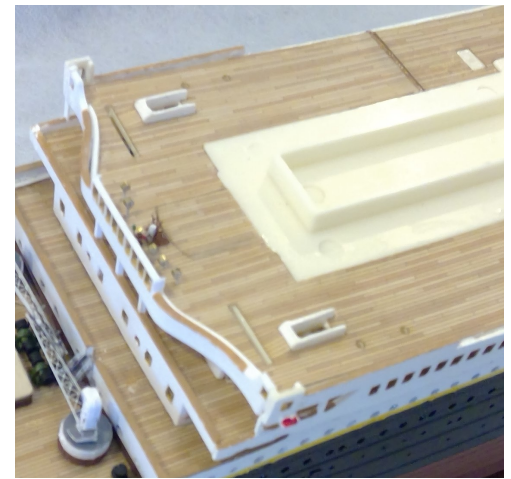
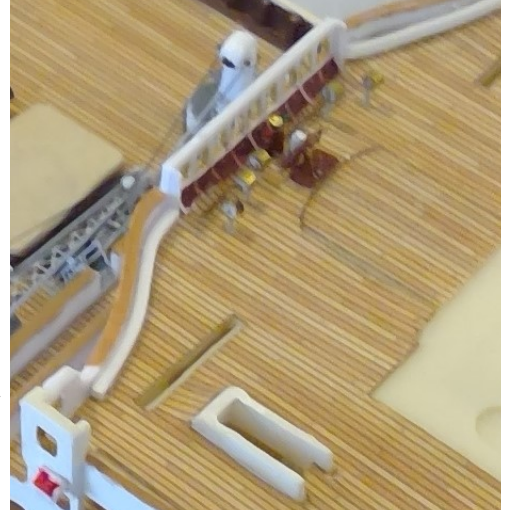
British Ocean Liner 1912

Scale 1:350, Minicraft Kit

Tom Ruggiero

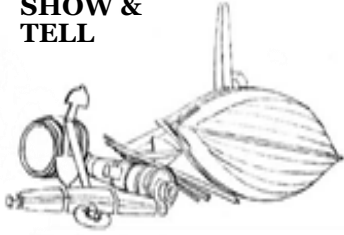
Tom continues working on Titanic. At this stage he is adding detail to the ship. At this point this detail will be visible although some will be partially hidden. Case in point is the Bridge. The kit has no details or parts for the bridge. I have photoetch ship wheels from Toms Model Works. There are several places to find details of the Bridge. There are five engine telegraphs, a binnacle, a pedestal for the wheel, and a small grating that the helmsman stands on. There are also storm shutters for the bridge windows.

I made the storm shutters by using Microsoft Excel and the printing them to the correct scale size. The I glued them below the windows as a single strip. I grooved a block of wood so that I could hold brass tube and rod on my drill press. I then drilled a single hole part way through a rod. I then inserted a smaller rod in that hole. That became an engine telegraph. For the binnacle I drilled through a brass tube. I cut it to length and inserted a brass wire. Both ends of the wire were bent up 90 degrees. A small drop of Krystal Clear was put on each. After drying they were painted green and red. Then, a lill pin was inserted in ome end to make the compass cover. Finally, the pedestal for the wheel was a length of brass rod in which a hole was drilled for the wheel axle. With the deck above installed the bridge is barely visible, but I will need to do this detailing on the navigating tower and docking bridge. They are open and fully visible so the Bridge gives me some practice.



# *The Broadaxe*

SHOW &  
TELL



Rattlesnake

Colonial Privateer

Scale 1:64, Mamoli Kit

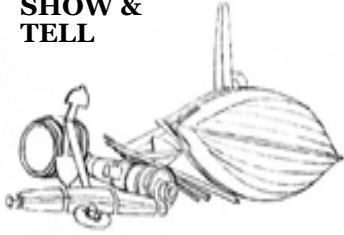
Larry Friedlander

Larry resurrected a model that he started 20 years ago. Although it starts as a kit, Larry have basically replaced everything in the kit other than the bulkheads and keel piece. He used the practicum from Bob Hunt. He is working on the deck beams.



# The Broadaxe

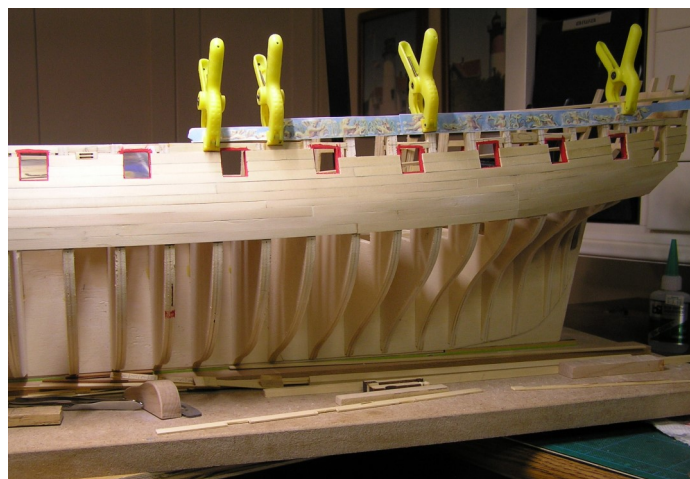
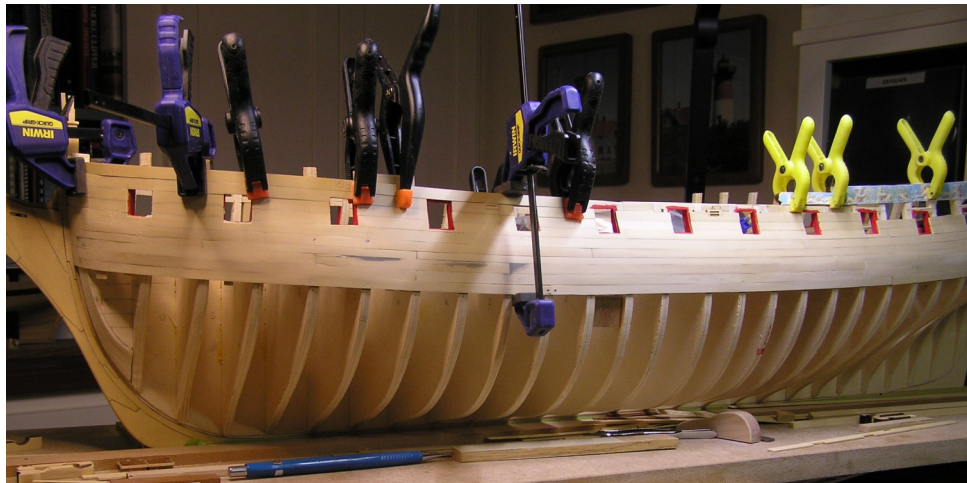
SHOW & TELL



HMS Winchelsea,  
English 5 th Rate,  
Scale 1:48, Syren Shipmodel  
(40 x 8 x 10 inches)

Joe Lorenzo

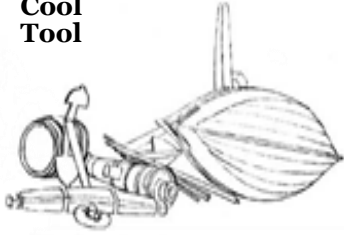
The top photo depicts a partial repair of the wales on Winchelsea after Joe found some discrepancies in alignment. The wales are at an underlayment stage and the gray areas are a bit of fill after tear out in repair. The bottom photo is a “look ahead” as to how the frieze will fit when planking is completed in the stern area. Joe says that as with prior models the gun port reveal continues to be a challenge.





# The Broadaxe

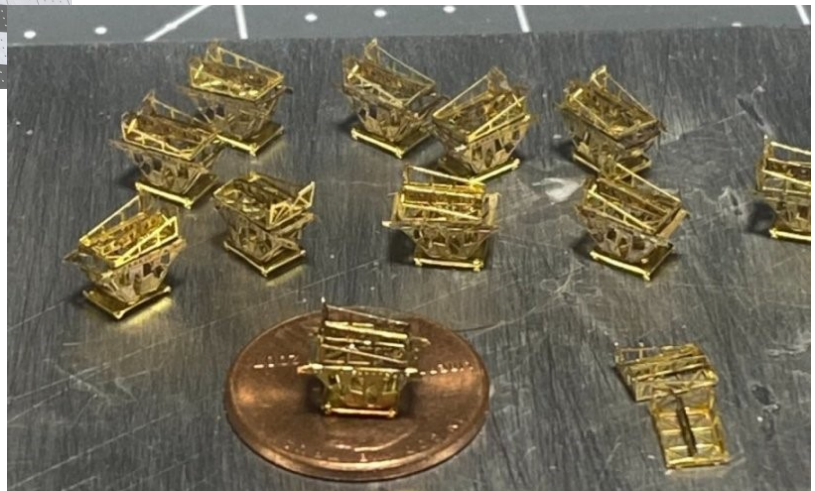
Cool Tool



## Microscope—Tomlov DM202 Max

Josh Fichman

Josh is building the IJN Mogami. While this model is based on the kit, Josh is using the “Detail Up” set to upgrade the model. There are thousands of photoetch replacements for the kit’s cast plastic. To assist in folding and assembling the many photoetch parts, Josh has a digital microscope. The microscope is 1300X HDMI LCD and you can take photos. It has a bottom transmitted light as is intended for soldering. It costs about \$150 from Amazon. You can work on a part while watching the screen. He finds that it is great in picking out fold lines on the photoetch as well as discerning which way to bend the part.



# The Ship Model Society of New Jersey



*The Broadaxe* is published monthly by The Ship Model Society of New Jersey (SMSNJ), a nonprofit organization dedicated to teaching and promoting ship modeling and maritime history. Membership dues are

\$25.00 for the first year and \$20.00 per year thereafter.

Visit our Web Site at: <http://www.shipmodelsocietyofnewjersey.org> where a web version of *The Broadaxe* can be found. *The Broadaxe* is distributed each month by email in PDF format.

Regular meetings are held on the fourth Tuesday of every month at 6:45 PM, at the Roseland Free Public Library, 20 Roseland Avenue, Roseland, New Jersey. Guests are always welcome.

Contributions to *The Broadaxe* are always welcome, and SMSNJ members are encouraged to participate. Articles, shop hints and news items may be submitted directly to the Editor as typed manuscript or electronic files, either on discs or by email. Handwritten notes or other materials will be considered depending on the amount of editing and preparation involved.

*The Broadaxe* is edited by Tom Ruggiero. Your ideas and suggestions are always welcome. Please submit them to Steve Maggipinto at [trugs@comcast.net](mailto:trugs@comcast.net).

If any member would like an email copy of the roster, please drop a note to Tom Ruggiero at the email address listed below. If there is an error in the roster let Tom know and the roster will be amended. Please make sure that your spam filter is not blocking emails from Tom because if it is, you won't get member bulletins. Please keep your contact information up to date. Your email address is particularly important because that is the main avenue of communication for club announcements. In case of emergencies such as last-minute cancellations due to weather, emails will be sent to the members. Direct All Correspondence to Tom Ruggiero.

## Club Officers

**PRESIDENT:**  
**Bill Brown**  
28 Betsy Ross Drive  
Allentown, NJ 08501 (732) 294-8960  
E-mail: [wldjbrown@gmail.com](mailto:wldjbrown@gmail.com)

**VICE PRESIDENT:**  
**Mason Logie**  
20 Sylva Lane  
Staten Island, NY 10305 (718) 273-1813  
E-mail: [mlogiejr@aol.com](mailto:mlogiejr@aol.com)

**SECRETARY/TREASURER:**  
**Tom Ruggiero**  
54 Peach Orchard Dr  
East Brunswick, NJ 08816 (732) 257-6063  
Email: [trugs@comcast.net](mailto:trugs@comcast.net)

**WEBSITE CONTACT:**  
**Chuck Passaro**  
E-mail: [cpassaro123@gmail.com](mailto:cpassaro123@gmail.com)