

THE BROADAXE

NEWSLETTER
of

THE SHIP MODEL SOCIETY OF NORTHERN NEW JERSEY
Founded in 1981



Volume 20, Number 8

July 2002

MINUTES OF THE REGULAR MEETING June 25, 2002

President Nick Starace mustered 27 members and one guest at 7:35 PM. **Jan Leung** of Hackensack came as a guest of **Stan Sinowitz** whom he had met via the Internet. **Jan** is building a Dumas kit of a motor lifeboat.

We were pleased to welcome back **Ed Nolan, Al Michaelson,** and **Olaf Eriksen**, all in recovery from health problems. **President Starace** also mentioned hearing from **Ben Passantino** who is recovering from a serious accident. We wish **Ben** a strong recovery.

Treasurer Al Geigel mentioned that our funds have received a nice increase owing to the sale of some of the kits donated to club by the family of the late **Jeff Gottlieb**. A list of the kits still available can be found elsewhere in this edition of the *BROADAXE*.

OLD BUSINESS

Eighteen members met and toured the *USS New Jersey* on June 1. Both traffic and parking problems complicated matters. Additionally, there was uncertainty about both the group rates and the tour itinerary aboard ship. **Ken Schuetz** mentioned the poor communication with the museum director. However, the tour proceeded well, the ship is in great shape and the staff is doing a good job (with a few rough spots probably due to funding problems). **Tom Ruggiero** provided a series of fine photographs. (These can be seen on the SMSNNJ website at: www.njshipmodelsociety.org/Main/News/USSNJ.htm.)

Nick Starace commented that the museum director is still interested in having a model ship exhibit aboard the *New Jersey*.

Henry Schaefer reported that the Red Bank art

gallery model exhibit would be impractical for several reasons. The proposal has been dropped.

Dave Watkins took the names of those who will be definitely exhibiting at the South Street Seaport Festival on August 3 and 4.

President Starace reminded us of the August 25 picnic outing in concert with the South Orange Seaport Society R/C boat event. Details and directions can be found elsewhere in this edition of the *Broadaxe*.

Vice President Bob Brehm provided all present with Tech Session questionnaire complete with an addressed and stamped return envelope. **Bob needs these returned as soon as possible** to help the next Vice President schedule useful Tech Sessions.

NEW BUSINESS

Nominations Chairman **Frank Hanavan** has presented his slate of nominees for our club's officers: Vice President, **Barry Rudd**; Secretary, **Tom McGowan**; Treasurer, **Francois Lachelier**. Lacking a volunteer or nomination for President, **Nick Starace** has agreed to continue as President. Elections will be held at the July meeting.

Current Vice President **Bob Brehm** is still seeking a presenter for the July meeting.

Tom Ruggiero visited the Sand Diego Maritime Museum and found it most worthwhile.

Mention was also made of the advertisement in the August, 2002 *Seaways Ships in Scale* for the touring exhibition of models from the Paris Musee de la Marine. This extraordinary exhibit will be at the Peabody Essex Museum, East India Square, Salem, Massachusetts from July 12 through October 14, 2002. For more information visit the Museum website at <http://www.pem.org>.

SHOW AND TELL

The *BROADAXE* is short of space this month so that there is not room for photos in the paper version. They are included in the Internet version at <http://www.njshipmodelsociety.org/Main/BroadAxe/index.htm>.

Henry Schaefer presented his completed *Citta di Livorno*, a scratch built 1927 combined freighter and passenger ship. **Henry** described his methods for creating lifeboats, davits, and antenna rigging for this obscure Mediterranean Sea vessel that was operated by the long defunct Italian Line. **Henry** finally identified the line with the help of a long out-of-print volume about markings on ship funnels. **Henry** has done a fine job.

Dennis Powell is completing the hull of the revenue cutter *Roger B. Taney* from the original Model Shipways kit. **Dennis** got some good advice from members about making authentic gun port lids.

Don Otis presented two offbeat, non-nautical projects which he's doing as house gifts for his son. Both were purchased from Model Expo catalogs. **Don** built a 1929 Ford Model A from a die cast metal Hubley kit and finished it exactly like the Model A he received from his grandfather in 1951. **Don's** second item was a European country house which he is building from a Domus kit.

BRING A PROBLEM

Barry Rudd sought advice about filling gaps between metal and wood. **Tom Ruggiero** and others agreed that liquid solder (a metal filled adhesive that usually comes in a tube) works very well. **Nick Starace** suggested that epoxy putty is equally suitable.

SPECIAL ANNOUNCEMENT

South Street Seaport Show August 3 and 4

So that we can be assured that the SMSNNJ members can set up their exhibits together, we need to notify the show planners which of us will be exhibiting and on what day(s). If you plan to exhibit, please notify **Dave Watkins** so that he can provide a list to the show organizers. If you haven't received a registration form, contact **Dave** or Keren Ludwig at (212) 748-7442.

CLUB PICNIC

As announced by **Nick Starace** in last month's Broadaxe we are planning to have our second club picnic, August 25 at noon, at the Meadowland Park Duck Pond in South Orange. Some of you may recall we had our first club picnic there three years ago.

This will be a wonderful opportunity for us to get together socially, outside the confines of the meeting room! Guests are of course welcome. There is a large pond and food vendors are intermittently available. Guests are invited to bring their own food and beverages. The park does not permit BBQ grills.

The South Orange Seaport Society will be having their annual Fall Fun Float starting at around 10 AM. The event will give us a chance to admire a nice collection of model boats of all types, some in action on the pond. If you have a model, R/C or not, by all means bring it along.

Directions to the Picnic

The pond and community center are in Meadowland Park off of Ridgewood Road in South Orange.

From 78 East:

Get off at the Maplewood exit and make the second right turn (jug handle) after you come off the exit. This Jug Handle will be for Valley Road. Go through the light and follow Valley Road all the way to South Orange Avenue. It is about 8-9 lights. South Orange Ave is the main street in South Orange so the corner will be fairly obvious. At the light for South Orange Ave. turn left and go under the railroad trestle. You will come to a light with an apartment house on the right corner. Make a right turn onto North Ridgewood Road. You will pass the apartment house on the corner and then a school. For the pond, make the immediate right as soon as you pass the school and the pond will be very visible on your left. Park in the lot in front of you.

From 78 West:

Get off at the Millburn/Maplewood Exit (Vauxhall Road). Make a right hand turn off of the exit and take the road you are on. You will pass Springfield Avenue first. After about a total of 4/10 mile from I78 you will come to Valley Road. Make the right onto Valley Road and follow Valley Road all the way to South Orange Avenue. It is about 7-8 lights.

South Orange Avenue is the main street in South Orange so the corner will be fairly obvious. At the light for South Orange Avenue turn left and go under the railroad trestle. You will come to a light with an apartment house on the right corner. Make a right turn onto North Ridgewood Road. You will pass the apartment house on the corner and then a school. For the pond, make the immediate right as soon as you pass the school and the pond will be very visible on your left. Park in the lot in front of you.

From the Garden State Parkway South:

Get off at the South Orange exit and head west. Once you are in downtown South Orange, continue under the railroad trestle. You will come to a light with an apartment house on the right corner. Make a right turn onto North Ridgewood Road. You will pass the apartment house on the corner and then a school. For the pond make the immediate right as soon as you pass the school and the pond will be very visible. Park in the lot in front of you.

From the Garden State Parkway North:

Get off on 78 East. At the next exit follow signs for 78 West. This is a quick turn around as you get off the highway, cross over an overpass, and enter 178 heading west. Once on 78 West follow directions from 78 West above.

See map on the outside page of this edition.

MODEL KITS FOR SALE

As previously announced, the estate of the late **Jeff Gottlieb** has generously donated to the SMSNNJ several ship model kits that had belonged to **Jeff**. The club has made these available for sale to interested individuals.

The following list gives a brief description of each kit and its status.

Anyone interested in purchasing any of the unsold kits should contact **Nick Starace** at (973) 376-9026 E-mail: nstaracell@aol.com .

LIST OF JEFF GOTTLIEB DONATED MODELS

1. **LYNX** by Panart, LOA 35", Scale 1:62, \$100

2. **HARVEY** by Artesinia Latina, LOA 37", Scale 1:50, \$85
3. **RATTLESNAKE** by Mamoli, LOA 28", Scale 1:64, \$140
4. **NINA** by Amati, LOA 16", \$65
5. **ALBATROSS** by Mantua, LOA 28", Scale 1:40, \$70 **SOLD**
6. **ROYAL CAROLINE** by Panart, LOA 33", Scale 1:47, \$120 **SOLD**
7. **PRINCE DE NEUFCHATEL** by Constructo, LOA 40", Scale 1:58, \$125
8. **BLUE SHADOW** by Mamoli, LOA 28", Scale 1:64, \$70
9. **NIAGRA** by Model Shipways, LOA 43", Scale 1:64, \$130
10. **ESSEX** BY Aeropicola, LOA 44", Scale 1:70, \$290 **SOLD**
11. **VASA** by Mantua (Sergal), LOA 47", Scale 1:60, \$350 **SOLD**
12. **DALLAS** by Artesinia Latina , LOA 29", Scale 1:50, \$90 **SOLD**

TECH SESSION

Bob Brehm discussed his method for trying to replicate the oil finish that the instruction manual for his **Emma C. Berry** project suggest for finishing the deck.

Bob made basswood chips which he finished with stains and various combinations of stains in order to try to achieve either a northern pine or maple texture on the model's basswood deck.

Much discussion ensued, punctuated by **Captain Earl Young's** recollections of the daily swabbing of New York Harbor pilot boat decks. **Captain Young's** point was that the deck of any working vessel, in particular a fishing vessel like the **Berry**, would show black caulking and decking in a driftwood shade of gray. That driftwood shade is a consequence of bleaching from saltwater, sun, sand and holy-stoning.

We adjourned at 9:45 PM after **President Starace** reminded us of the need for a volunteer to take over as refreshments person for **Tom McGowan**.

Mark Your Calendar

South Street Seaport Ship and Boat Model Festival August 3, 4.

SMSNNJ Picnic August 25 12 Noon

NRG Conference October 17-21

The 'BROADAXE' is published monthly by The Ship Model Society of Northern New Jersey, a nonprofit organization dedicated to teaching and promoting ship modeling and maritime history. Membership dues are \$20.00 for the first year and \$15.00 per year thereafter.

Visit our Web Site at:

<http://www.njshipmodelsociety.org>

where an Internet version of the *BROADAXE* can be found.

Regular meetings are held on the fourth Tuesday of every month at 7:30 P.M., at the Millburn Free Public Library, 200 Glen Avenue, Millburn, New Jersey. Guests are always welcome.

Contributions to the *BROADAXE* are always welcome, and SMSNNJ members are encouraged to participate. Articles, shop hints and news items may be submitted directly to The Editor as typed manuscript, electronic files, or on 3.5" floppy discs. Handwritten notes or other materials will be considered depending on the amount of editing and preparation involved.

Direct All Correspondence To:

BROADAXE EDITOR

David C. Watkins, 4 Knollwood Ave, Madison, NJ 07940

E-mail davidwatkins@telocity.com

OFFICERS

PRESIDENT:

Nick Starace II, 9 Fielding Rd., Short Hills, NJ 07078
(973) 376-9026 E-mail: nstaracell@aol.com

VICE PRESIDENT:

Bob Brehm, II Portland Road, Summit, NJ 07901
(908) 273-1288 E-mail: Boblyle@bellatlantic.net

TREASURER:

Al Geigel, 237 Maple Ave., Dunellen, NJ 08812
(732) 968-5969 E-mail: AlGeigel@worldnet.att.net

SECRETARY:

Don Otis, 1008 Windsor Rd., Teaneck, NJ 07666
(201) 836-1810

WEBMASTERS:

Al Geigel, E-mail: AlGeigel@worldnet.att.net
Dave Watkins, E-mail: davidwatkins@telocity.com

FROM THE EDITOR



I'm off to Norway and Spitsbergen next month so the August Broadaxe will be abbreviated.

THE BROADAXE

NEWSLETTER

of

THE SHIP MODEL SOCIETY OF NORTHERN NEW JERSEY

Founded in 1981

Volume 20, Number 8

July 2002

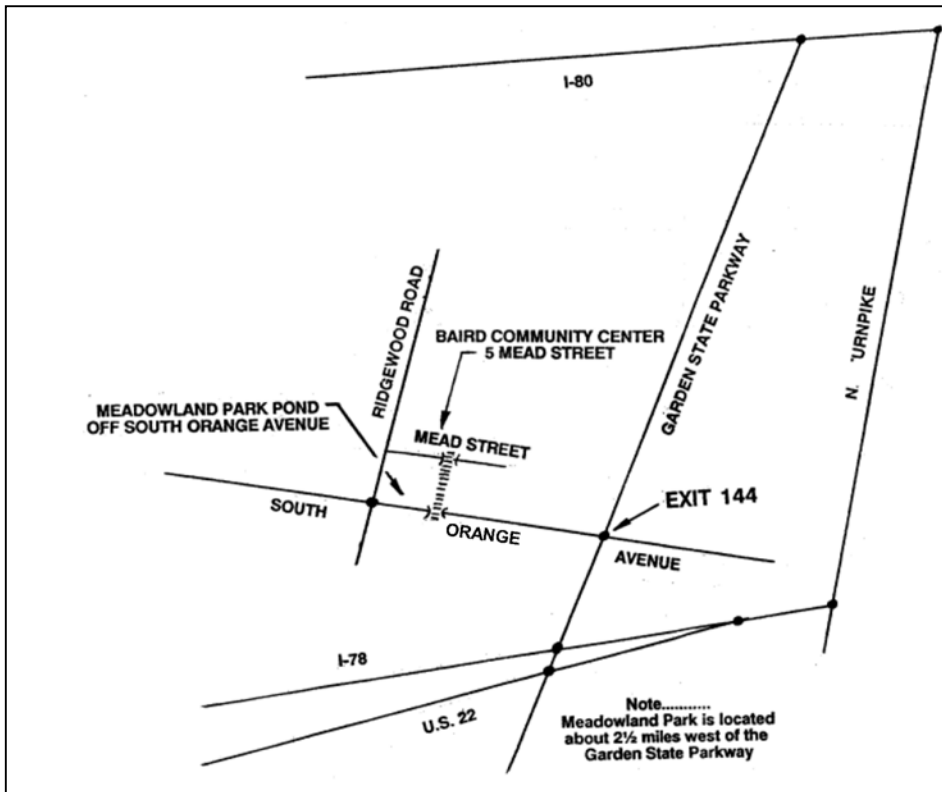
Newsletter Editor:

David Watkins

4 Knollwood Ave.

Madison, NJ 07940

Location of the Club Picnic on August 25



NEXT MEETING:

July 23, 2002
7:30 PM

MILLBURN
PUBLIC
LIBRARY

Tech Session:

To Be
Announced