

THE BROADAXE

NEWSLETTER
of
THE SHIP MODEL SOCIETY OF NORTHERN NEW JERSEY
Founded in 1981



Volume 23, Number 10

October, 2005

MINUTES OF THE REGULAR MEETING September 27, 2005

The meeting was called to order by President **Jeff Fuglestad** at 7:30 PM with 31 members in attendance. **Ed Marrie** was attending his 3rd meeting and was unanimously elected to membership. We also had one new guest attending his first meeting, **Tony Alworth** from Blairstown, NJ.

After presenting his treasurer's report, **Ken Schuetz** reviewed some major expenses incurred over the past year which contributed to the decrease in the club's operating account, the more significant being last year's show at White Meadow Lake and the deposits on the Brookdale and Joint Clubs shows. Ken also did a cash flow analysis of inflows from dues and outflows for normal operating expenses (meeting room rental, Broadaxe costs and website fees) and reported that we are currently operating at a small deficit. The dues are not covering these expenses.

Jeff Fuglestad addressed the proceeds to be generated from the sale of items donated by the members at the Brookdale show. Jeff also thanked **Dave Roach**, present at the meeting, for his very generous donation of books to be sold at the show. A discussion then followed addressing the dues shortfall. Jeff advised the members that the Executive Board members have waived their exempt status and will pay their annual dues for the current year. A proposal was then made to increase the annual membership dues from \$15 to \$25 per year. Several members pointed out that this will require an amendment to the club's constitution. After some discussion of the wording of the amendment change, Jeff Fuglestad requested **Bob Fivehouse** to draft an amendment to the club's constitution increasing the dues from \$15 to \$25 effective July 1, 2006. Bob was asked to have the amendment available at his earliest convenience, hopefully for the next regular meeting in October where it will be presented to the members. The proposed amendment will then be included in the next issue of the Broadaxe after which a vote by the membership on the amendment will be taken at the following meeting.

Jim Caulkins addressed the membership to advise them of several power tools he is donating to the club (total retail value of over \$800!) including a Delta bandsaw, Micro Lux tilting arbor table saw and several Micro Lux miniature

tools. Any tools not sold at the Brookdale show will be available for auction at our White Whale Auction in December. Our thanks to Jim for his very generous donation!

Allan Yedlinsky spoke about a David Antsherl workshop he attended in June on lofting of frames and reading ship plans. Allan informed us that there is another workshop coming up in January 2006 covering silver soldering and other disciplines. The guest speaker will be Grant Walker whose photos have appeared in the Nautical Research Journal.

Dave Roach provided us with an update on **Abe Taubman** who is doing well. Dave saw Abe, along with **Alan Frazer**, at a recent meeting regarding vendors that will be at the upcoming NRG Conference.

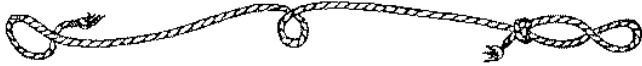
Mike Gutsick reported on an e-mail he received from **Mason Logie** inquiring of membership interest in a cruise next summer on the museum fireboat *John J. Harvey*. Mike noted that Mason hopes to be at the October meeting where he will provide more information on the cruise.

Jeff Fuglestad updated the members on **Tom McGowan's** condition. Tom was recently hospitalized. We all wish Tom a speedy recovery and his return as Club Secretary. Mike Gutsick agreed to be acting secretary during Tom's absence.

The Brookdale show was then discussed at length with requests for volunteers to put flyers for the show in local hobby and toy stores and handle various tasks needed at the show, along with bringing donuts, coffee, sodas, cups and other items to the site. Thanks to all those members who stepped up to handle all these tasks.

Jeff Fuglestad also appealed to all those present to make every effort to attend the show. We are hoping for a good turnout that will make this our most successful show.

Finally, Jeff spoke briefly about the Joint Clubs show in New London. The theme will be "Ships throughout History". We will be addressing the special needs of this show at upcoming meetings.



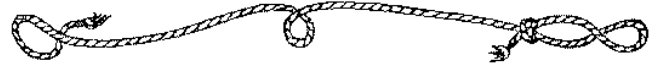
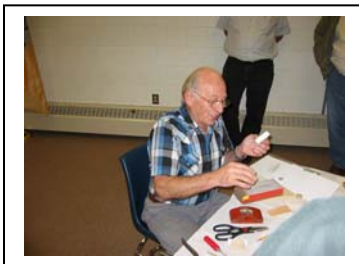
BOOKS AND PUBLICATIONS

Barry Rudd presented us with "The Island Nation – a History of Britain and the Sea" by Brian Lavery and published by Conway Maritime Press. The book discusses the 1,000 year maritime history of England. There are numerous thumbnail sketches of ships (*HMS Victory*, *HMS Belfast*, *Cutty Sark*) and an extensive list of maritime attractions and museums in the U.K. The book sells for \$23.00 and is available at Barnes & Noble and Amazon.com.



TECH SESSION

Ozzie Thalmann demonstrated his techniques for laminating styrene to wood to simulate metal surfaces on modern ships. Ozzie's preferred sheet thickness is .020" unless he is covering a multi-sided piece for which he will use .010" and wrap it completely around the piece and end up with one seam in the unit. Ozzie uses the thicker, gap filling CA glue which he spreads over the wood surface. Ozzie suggests that the glue be put on the plastic strip rather than the wood if it's being applied to an end grain surface. Ozzie also showed how he achieves a laminated side piece which ends up flush with a deck surface. Ozzie uses various grits of sanding and emory paper to smooth the edges. He recommends sanding the full surface very lightly with very fine sand paper to improve paint adherence. Ozzie will also mark out all portholes on the plastic strip and punch them out with a metal hole punch before he glues the strip to the wood. He then hammers in the brass airports. Ozzie will use a hole punch (used for making belt loop holes in leather) to punch out pieces of masking tape which he uses to cover the inside of the porthole before painting. Ozzie also showed the members some of the completed components of the Liberty Ship he is currently building. Very nice job, Ozzie!



SHOW AND TELL

Don Otis brought in the Colonial Schooner *Sultana*, a Model Shipways kit in 3/16" scale. Don has built several of these models for gifts and enjoys making this ship.

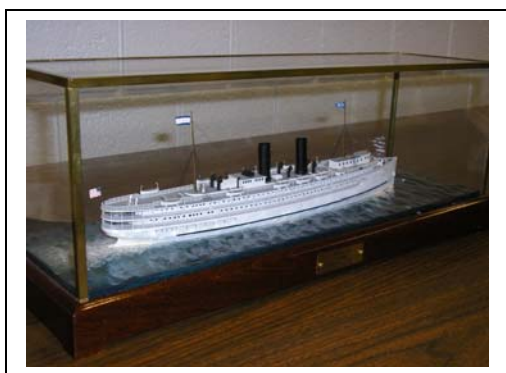


Allan Yedlinsky showed his completed *HMS Roebuck*, built Admiralty style with no masts, yards or rigging but all deck furniture. Allan spent over 900 hours on the *Roebuck*. He felt his scratch built long boat was the best he ever made. Allan also used the silver soldering technique for some of the ship's metal work, the first time he has done this and finds he prefers the silver soldering technique.



Although not part of the Show & Tell, **Bill Dunphy** brought in a Marine Model kit he received as a boy 50 years ago. It's a model of the *Cutty Sark*. It has a machine carved solid hull. However, it's made of oak, not basswood!

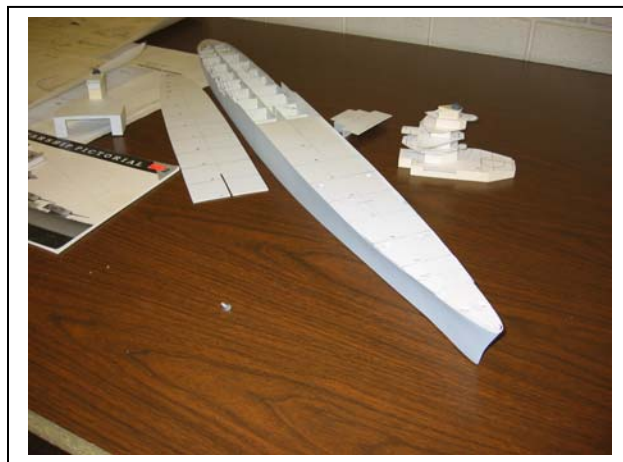
Bob Fivehouse brought in a model of an American Coastal Steamer, *Yale*, built in 1906. The Steamer ran very successfully between New York and Boston. Bob scratch built the ship using plans he found in engineering magazines and many photos he was able to find on the vessel. Its scale is 1:384 or 1" = 32'. The *Yale* and its sister ship *Harvard* were among the first triple screw turbine steamers built in America.



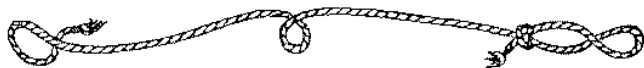
Roy Goroski showed us his progress on the Noak built ,sloop rigged Smack, *Emma C. Berry*. Since he last showed us his progress, he's completed the transom molding and rails, bulwarks, hawse pipes, mooring chocks and railing details. Roy said he will start on the diorama stand he will mount his model upon. Very nice so far Roy!



Gary Kingzett brought in his work in progress of the heavy cruiser *U.S.S. San Francisco*. Gary has completed the basic waterline hull and several of the superstructures. Gary is building it for a friend who served on the ship. He's having some difficulty in the ship's appearance as he wants to complete it as launched and is finding far more pictures of the ship later in its history after several re-fits. The bow and stern pieces are shaped from "butter board", a urethane foam product available from McMaster & Carr. Gary said the product has excellent working properties. It's easy to saw and carve and its surface is very smooth and is not porous. Gary is building his waterline model from plans from Floating Drydock in 1:192 scale.

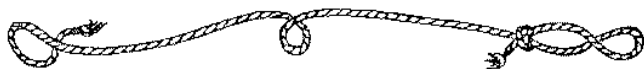


After a very full and fast paced evening, the meeting was adjourned at 9:30 PM



FROM THE EDITOR

I would just like to take the opportunity to wish Tom McGowan a very speedy and complete recovery from his recent surgery. I also want to thank him for the outstanding job he has done as our secretary. Having sat in his chair for the first time, I see first hand how tough a job it is. It's the only job at the meeting where you really have to pay attention to everything that's going on in order to make sure the minutes are accurate. No daydreaming allowed!



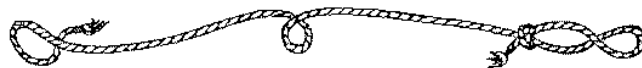
"Soundings from D Deck"

There are just a couple of things this month I'd like to pass along to you.

From **Dave Sasher** – Some sad news to pass along to those PT Boaters out there. Alyce "Mrs. Boats" passed away on September 28th. She will be laid to rest in Memphis, Tennessee.

To those who may be in or near Palmetto, Florida on March 11th & 12th, 2006 –

The Model Boat Guild of the Florida Gulf Coast Maritime Museum at Cortez is presenting an exhibition spotlighting model ships and boats at the Manatee Conference Center in Palmetto, just south of Tampa Bay. Anyone interested in more information should contact Harold Nils Pelta, Event Coordinator, Age of Sail, Age of Steam, P.O. Box 208, Ellenton, FL 34222 or by e-mail at hnpelta@erols.com



UPCOMING TECH SESSIONS

October 25, 2005 – Ernest Connor will discuss techniques for weathering your model

November 22, 2005 – To Be Determined

December 13, 2005 – White Whale Auction

The **'BROADAXE'** is published monthly by The Ship Model Society of Northern New Jersey, a nonprofit organization dedicated to teaching and promoting ship modeling and maritime history. Membership dues are \$20.00 for the first year and \$15.00 per year thereafter. Visit our Web Site at: <http://www.njshipmodelsociety.org> where a Web version of the **BROADAXE** can be found. The **BROADAXE** is distributed by both US mail and e-mail in PDF format.

Regular meetings are held on the fourth Tuesday of every month at 7:30 P.M, at the Millburn Free Public Library, 200 Glen Avenue, Millburn, New Jersey.

Guests are always welcome.

Contributions to the **BROADAXE** are always welcome, and SMSNNJ members are encouraged to participate. Articles, shop hints and news items may be submitted directly to The Editor as typed manuscript or electronic files, either on discs or by e-mail. Handwritten notes or other materials will be considered depending on the amount of editing and preparation involved.

Direct All Correspondence To:

BROADAXE EDITOR

Michael Gutsick, 34 Junard Drive, Morristown, NJ 07960
(973) 734-1648 E-mail: mikejgutsick@optonline.net

OFFICERS

PRESIDENT:

Jeffrey Fuglestad, 73 Rensselaer Road, Essex Fells, NJ
07021
(973) 228-3230 E-mail: boatworks1@worldnet.att.net

VICE PRESIDENT:

Edward Hegstetter, 79 Cyprus Point Lane, Jackson, NJ
08527
(732) 928-1140 E-mail: jeheg14@optonline.net

TREASURER:

Ken Schuetz, 34 Oak Drive, Roseland, NJ
07068(973) 226-9004 E-mail:
knschuetz@verizon.net

SECRETARY:

Thomas McGowan, 36 Clover Hill Lane, Colts Neck, NJ
07722
(732) 946-8322 E-mail: jmcgcla@aol.com

WEBMASTER:

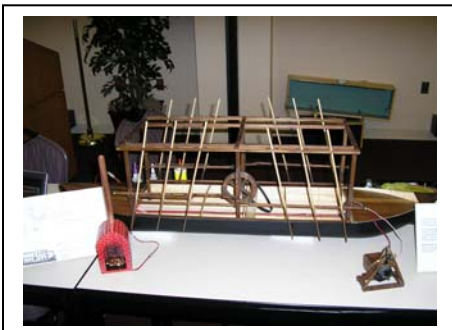
Al Geigel E-mail: algeigel@optonline.net

From The Quarterdeck –

....I just want to express my gratitude and heartfelt thanks to all who braved the horrible weather on Saturday to bring their models to Brookdale College, including those who just came to be there and lend a hand. Everyone there thought the facility was first rate. We also had a fair number of the public come through in spite of the rain. I can tell you that our show was well received by all. It also looks like we may be close to breakeven on show expenses. Ken and I will provide an update at the October meeting.

Jeff Fuglestad, President

A few Photos from the Show



THE BROADAXE

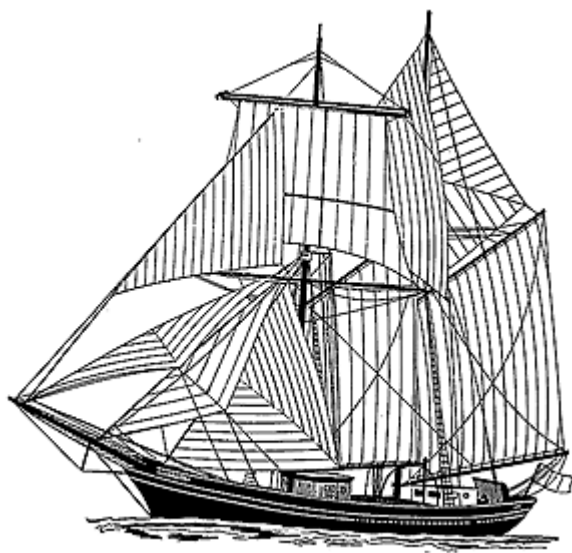
NEWSLETTER
of
THE SHIP MODEL SOCIETY OF NORTHERN NEW JERSEY

Founded in 1981

Volume 23 Number 10

October 2005

Newsletter Editor:
Michael Gutsick
34 Junard Drive
Morristown, NJ 07960



NEXT MEETING:

October 25, 2005

7:30 PM

**MILLBURN PUBLIC
LIBRARY**

TECH SESSION

Weathering Techniques
Ernest Connor