

THE BROADAXE
NEWSLETTER
of
THE SHIP MODEL SOCIETY OF NEW JERSEY
Founded in 1981



Volume 30, Number 5

May, 2012

**MINUTES OF THE REGULAR MEETING
May 22, 2012**

The regular meeting was called to order at 7:30 with 21 members and one guest present. The latest issue of the Broadaxe has been emailed, but hard copies have not yet been sent. Please notify the secretary if you are not getting the Broadaxe and other communications that are forwarded on occasion. We are trying to eliminate the mailing of hard copies of the Broadaxe, preferring instead to send you the beautiful color edition by e-mail. Broadaxe creation is a joint effort of **Larry Friedlander** and **Michael Storch**. **Dennis Powell** distributes both the electronic and printed versions.

In the absence of **Larry Friedlander**, **Steve Maggipinto** was impressed into service as scribe (didn't we fight the War of 1812 over this?). Steve humbly apologizes for errors or omissions and states that any such are unintentional.

Editor's Note: On behalf of the club, I want to thank both Steve and Larry. Being the club scribe is an onerous task and their services to the NJSMS are most appreciated.

As **Chuck Bergman** was in attendance at his third meeting as a guest, he was unanimously invited to join the group. **Bob Fivehouse** then promptly set an astronomical fee for Chuck's initial dues (these outgoing officials sure do take liberties, don't they?!) To Chuck's immense relief, Bob recanted.

Al Geigel submitted the Treasurer's Report. Expenses from the April 28th Joint Clubs Conference slightly exceeded receipts. However, through the usual stellar selling efforts of **Tom Ruggiero**, 11 mugs left over from the conference were sold to the members present. Bottom line: we

ended up a few dollars in the black. Nice going Al and Tom! Don't worry, Al—we're not going to submit your name to the Congressional Budget Office as a guru on "how it's done". We'll keep that knowledge strictly in house.



OLD BUSINESS

Dan Pariser thanked the Broadaxe staff for the Nautical Research Guild ad in the April edition of the newsletter. He reminded everyone that a discounted NRG membership fee of \$33 is being offered to club members through June 30th.



**A special offer for our friends in the
Ship Model Society of New Jersey**



For a limited time, members of the Ship Model Society of New Jersey have an opportunity to join the Nautical Research Guild at a special rate of \$33.00. Existing members can renew or extend their membership at a special rate of \$35.00. The Nautical Research Journal is better than ever, with more color photos, more articles on model ship building and an expanded Shop Notes section.

The NRG website offers members exclusive access to a 2000-book lending library, project photos, research assistance, a members list, and the Guild's e-mail system and member e-mail forums.



ADDED BONUS: A copy of Shop Notes II will be donated to the Ship Model Society of New Jersey library.

To receive a complimentary copy of Shop Notes II for your club library, a minimum of five SMSNJ members must fill out the special registration forms and return them, along with their remittance, to the NRG Home Office, by no later than June, 30, 2012.

<http://www.thenrg.org/>

Al Geigel thanked those who attended the Joint Clubs Conference on April 28th for their support. Specially named were **Chuck Passaro**, who gave the conference presentation, **Don Otis** for his “Table Talk” tech session, those who manned the registration and hospitality table, model judges, **Jim Roberts Award** presenters and all other club members who participated and brought models. There were 108 attendees, with more than 66 models represented. All feedback was positive and consensus is that the conference was a huge success. Congratulations to our own **Chuck Passaro**, winner of the **Jim Roberts Award** for his 18th Century longboat! There was one concern—when attendees were at lunch, no one was designated to watch the models. Something to consider for the future. By the way, for those interested, there are still some Model Expo discount cards left over from the conference.



Bob Fivehouse reminded attendees that our current President, Vice President and Treasurer are required to relinquish their posts in July. Our bylaws stipulate that no person can hold the same office for more than four years. As **Larry Friedlander** is only halfway through his term as Secretary, short of “recall” by the membership, his post is secure for another two years.

Note: Since the May meeting, the following candidates have been nominated:

Tom Ruggiero _____ President
Chuck Passaro _____ Vice President
Ken Schuetz _____ Treasurer



NEW BUSINESS

We’re back in the shirt business! **Tom Ruggiero** stated he can get royal blue polo shirts with the SMSNJ logo for something less than the cost of the denim shirts. The shirt company already has the logo, so there’s no set up fee. Tom circulated a sign-up sheet for those interested. There was interest and several names were collected.

True to form, **Ozzie Thalmann** attended this year’s annual Midwestern Model Ships and Boats Contest held in Manitowoc, WI (home of the Tonka Truck). And, as usual, Ozzie came away a winner—in this case, 2nd prize for his PT boat model...with lethal working parts, of course. Good job, Ozzie!



On the subject of shows, **Michael Storch** passed around photos of several “4-Club” conferences from the early 1990’s.

Bob Fivehouse mentioned that he has a good supply of pearwood. He will bring it to a future meeting.

Roy Goroski asked if anyone knows how to fix a wonky lathe. Seems Roy has one that only wants to go in one direction. General thought is that this is an electrical problem. Solutions offered included getting a reversing switch or a rheostat. Roy will bring the ailing machine to the next meeting for

some professional diagnosis and surgery recommendations.

Next under discussion was selection of a new model or type for a group build. Something like the *Hannah* might be too complex. **Bob Fivehouse** suggested that we hold a second meeting each month where members can work on their own individual projects—and get help on the spot from fellow members. Where to do this? Two possibilities were mentioned: 1) a sewing/quilting room in Morris Plains used by **Tony Alworth**'s wife, 2) the Millburn Library (no charge to the club) on a Saturday. Tony will check with his wife; **Chuck Passaro** will check with the library. Two potential concerns are availability of electrical outlets and protection of the premises from spills, paint spray, dust and the like.



WEBSITE & LENDING LIBRARY

Website: <http://www.shipmodelsocietyofnewjersey.org/>

Lending Library:

<http://www.shipmodelsocietyofnewjersey.org/club-library.php>



BOOKS AND PUBLICATIONS

Dan Pariser passed around a catalog from Bonham's Auction Sale held on May 23rd in New York City. Entitled *Life on Board: Maritime Paintings and Art*, it featured such gems as a Napoleonic Prisoner-of-War bone model of a naval brigantine, a 12-foot(!) builder's model of *Rangitiki* offered for \$40-\$60K, and *Titanic*'s White Star burgee. This latter was presented by surviving crew members to the "Unsinkable" Molly Brown. It sold for \$15,000.

<http://www.bonhams.com/auctions/19994/>



TECH SESSION

There was no tech session planned for the meeting. **Tom Ruggiero** reminded the members that, per our constitution, it's a member's responsibility to volunteer for Tech Talk duty. If anyone needs assistance with a formal presentation, help is available.

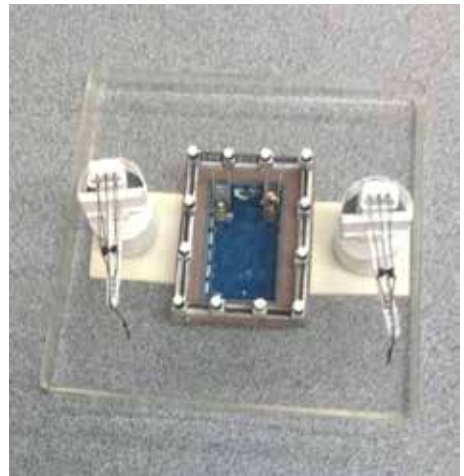
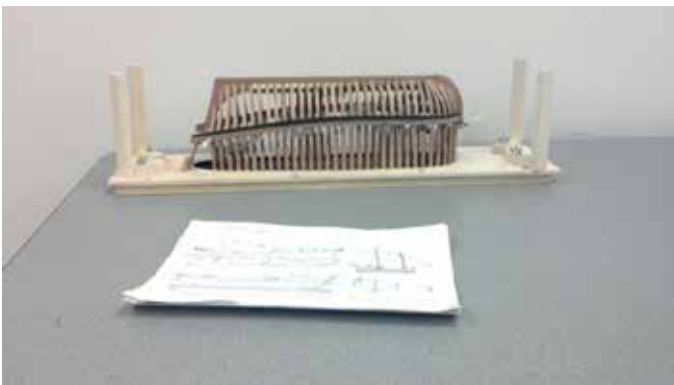
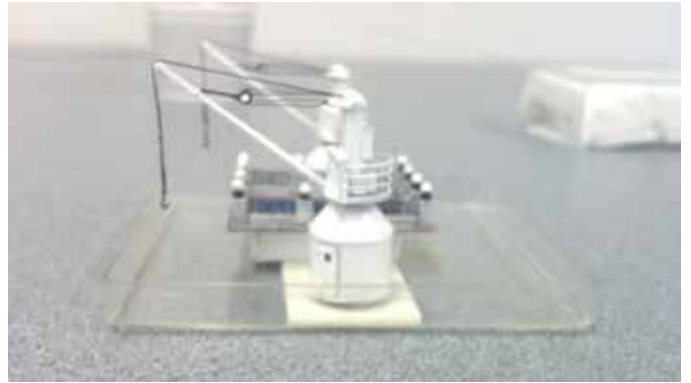
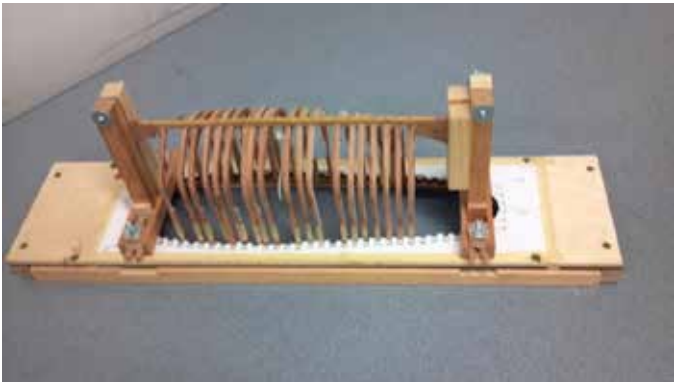
Bob Fivehouse mentioned we have quite a few videos from past tech sessions. Question: Can these be made available on the website (YouTube?) or via the lending library? Some of these are in Betamax format and would need to be converted.



SHOW AND TELL



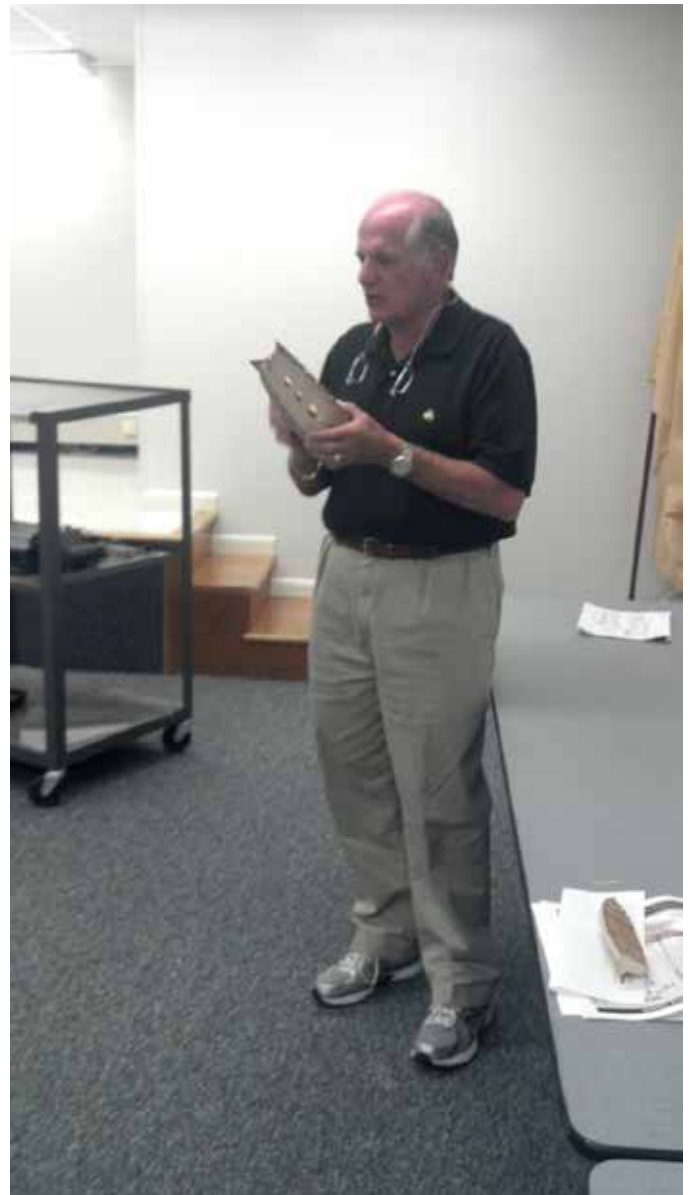
[This photograph speaks for itself]



Tom Ruggiero and **Dennis Powell** brought in models of the *Hannah* they are creating in the group build. Tom found several discrepancies in the Hahn plans he was originally using, e.g., where the wales were placed. He has secured Chapelle plans from the Internet that seems to be more accurate. In constructing the hull, Tom has been using a cheap and very efficient clamping device using #6 machine screws, 2 washers and a wing nut. Often, you can't beat home-built tools for a specific application.



Chuck Bergman is working on a model of the *Lady Nelson* circa 1780. He has run into some hull planking issues and asked if he might get some assistance from more experienced club members. Chuck Passaro offered to help his namesake.



Al Geigel is building Chuck P's kit he won at the Joint Club's conference. Although a small model, the kit is advanced, and Al found the physical size quite a test. Al's also been on hiatus from model building for a while, so that just added to the challenge. But in true once-you-learn-to-ride-a-bike fashion, he has been pedaling right along and is almost finished.



Mason Logie showed the *LST* he has been building from a 1950's *Lindberg* kit. He intends to leave the loading doors open and ramp down, but this raises an issue. Just what did the interior of those doors look like? To date, he hasn't been able to find plans to answer that question. What he *has* found is a 40mm Bofors that closely matches in scale what he needs for the *LST*'s armament. Gotta be thankful for the little blessings. Mason also showed a *Cutty Sark* he has been working on. Fortunately, he found lots of information for *this* vessel on the web.



Dan Pariser announced he's been commissioned to build a model of *SS Rex*, an Italian ocean liner launched in 1931. *SS Rex* won fame as the westbound 1933 Blue Riband champion, an accolade she earned in August of that year. The Blue Riband was unofficial recognition given to the passenger liner crossing the Atlantic at the highest recorded speed while in regular service. *Rex* held that honor until 1935 when it was captured by *SS Normandie*. Dan has been working from a book in Italian with many detailed photos. Most of the model is scratchbuilt, but Dan has found suitable photo etch railings and a searchlight platform from BlueJacket. The ship's bar is hand done, as is a handsome rendering of the pool. This latter is 1¼" x 1¾". Pool water is 30-minute epoxy poured into a cube painted dark blue on the bottom, light blue on the sides. Ropes are constructed of annealed iron wire wrapped around a dowel in coils, then clipped and glued. Scale is 1:200.



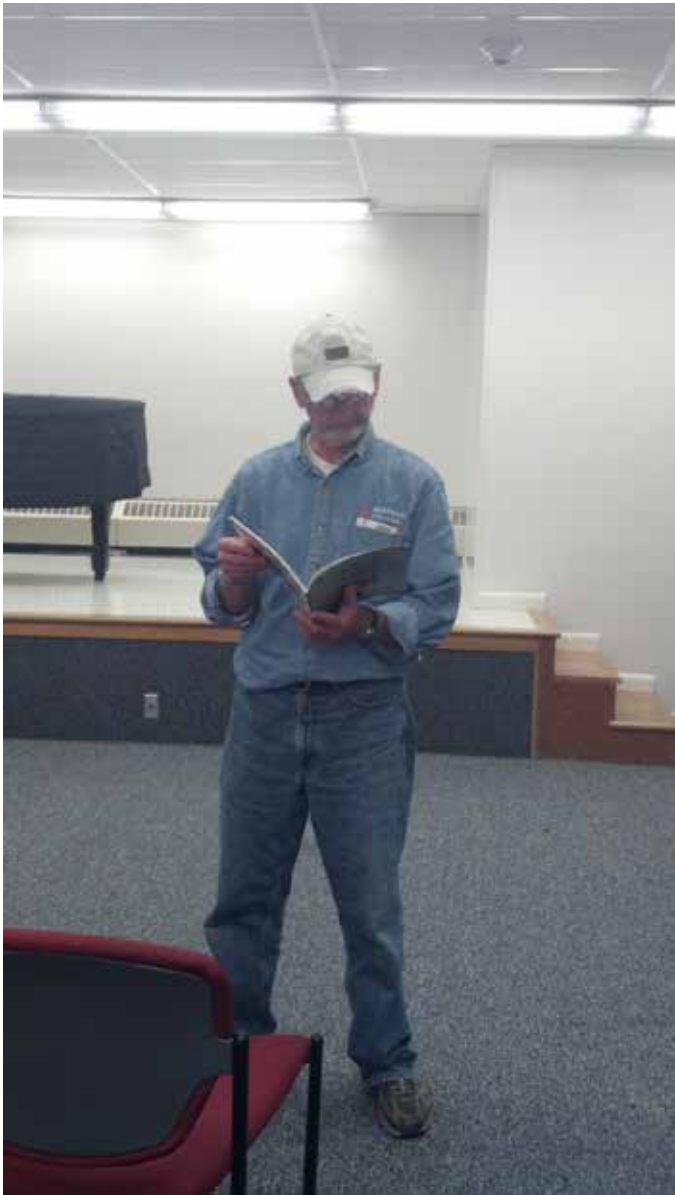
HANNAH GROUP

The next Hannah group met will be held on June 23rd at **Tom Ruggiero's** house.



CANDID SHOTS





Your ideas and suggestions are always welcome in the Broadaxe. Please submit them to Larry Friedlander.

UPCOMING TECH SESSIONS

To Be Announced

Ongoing reminder, that Tom McGowan is asking for **volunteers to give future tech sessions.**

If there is some facet of the hobby that you can tell us about, have an idea for a tech session, or are interested in learning about one of the multitude of tasks that go into the creation of a ship model please contact **Tom McGowan.**

The meeting was adjourned at 9:45.

The '**BROADAXE**' is published monthly by The Ship Model Society of Northern New Jersey, a nonprofit organization dedicated to teaching and promoting ship modeling and maritime history. Membership dues are \$25.00 for the first year and \$20.00 per year thereafter

Visit our Web Site at:

<http://www.shipmodelsocietyofnewjersey.org> where a Web version of the **BROADAXE** can be found. The **BROADAXE** is distributed by both US mail and e-mail in PDF format.

Regular meetings are held on the fourth Tuesday of every month at 7:30 P.M., at the Millburn Free Public Library, 200 Glen Avenue, Millburn, New Jersey. Guests are always welcome.

Contributions to the **BROADAXE** are always welcome, and SMSNNJ members are encouraged to participate. Articles, shop hints and news items may be submitted directly to The Editor as typed manuscript or electronic files, either on discs or by e-mail. Handwritten notes or other materials will be considered depending on the amount of editing and preparation involved.

The **Broadaxe** is written by **Larry Friedlander**, edited by **Michael Storch**, and distributed by **Dennis Powell**.

Direct All Correspondence To:

BROADAXE EDITOR

Michael Storch, 115 Virginia Ave., Clifton, NJ 07012
(973) 472-3232 E-mail: mstorch@stro.com

OFFICERS

PRESIDENT:

Robert Fivehouse, 53 Ironia Road, Randolph, NJ 07869
(973) 927-3426 E-mail: Fivehouse@verizon.net

VICE PRESIDENT:

Tom McGowan, 36 Clover Hill Lane, Colts Neck, NJ 07722
(732) 946-8322 E-mail: jmcgcla@optimum.net

TREASURER:

Al Geigel, 453 Second St, Dunellen, NJ 08812
(732) 529-5147 E-mail: algeigel@optonline.net

SECRETARY:

Larry Friedlander, 112 Holiday Lane, Rivervale, NJ 07675
(201) 666-6984 E-mail: Twomai@gmail.com

WEBMASTER:

Chuck Passaro E-mail: cpassaro@verizon.net

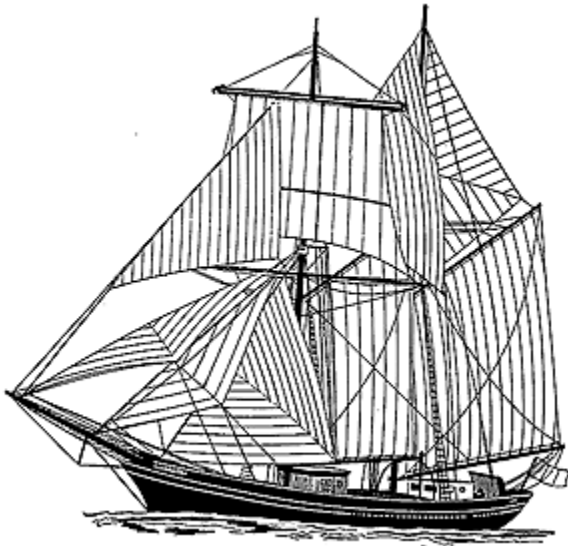
THE BROADAXE NEWSLETTER
THE SHIP MODEL SOCIETY OF NEW JERSEY

Founded in 1981

Volume 30 Number 5

May 2012

Newsletter Editor
Michael Storch
115 Virginia Ave.
Clifton, NJ 07012



NEXT MEETING:

June 26, 2012

7:30 PM

MILLBURN PUBLIC
LIBRARY

Bring Your Models
[Finished or Unfinished]