

# THE BROADAXE

NEWSLETTER  
of  
THE SHIP MODEL SOCIETY OF NEW JERSEY  
*Founded in 1981*



Volume 27, Number 8

August, 2009

## MINUTES OF THE REGULAR MEETING July 28, 2009

The meeting was called to order by President **Bob Fivehouse** at 8:15 PM with 22 members in attendance. We had 2 visitors this evening, **Stephen Sudia** from Jersey City and **Chuck Passaro** from Rutherford.

Our late start this evening was at the request of the Millburn Library as our room was needed for auditions for a children's play. As a result of the late start and the time Al Geigel indicated he needed to present his tech session, **Bob Fivehouse** asked the members to defer any old or new business they were planning to bring up until the August meeting. There being no urgent topics to discuss, the business meeting proceeded with the comments on the Broadaxe and the Treasurer's Report.

Comments, questions and or corrections to the July issue of the Broadaxe were requested. There being no corrections, the July 2009 issue of the Broadaxe was accepted into the minutes.

**Al Geigel** presented his Treasurer's Report to the members. There being no discussion or comments on the report, the Treasurer's Report was accepted into the minutes.

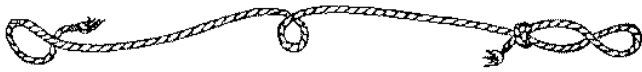
The meeting was turned over to Al Geigel for his tech session.



## TECH SESSION

Tonight's tech session topic was photo-etching using Micro Mark's photo-etch kit. **Al Geigel** brought all of the materials he has been using to make various parts for his model of the *Charles W. Morgan*. He decided to show us the complete process for photo-etching support bars for the cross trees. Al decided to fabricate this support piece as some of the wood cross tree members proved to be too easily broken. Some of the steps were completed prior to the meeting such as printing the artwork onto the film and exposing the film. Al had several samples of artwork he has already used and explained that they were all created using TurboCad. Al demonstrated how the metal is prepared and then laminated the photoresist to the metal and how the film and laminated metal are exposed. Al uses a 100 watt bulb and exposes each side for about 10 minutes. The plate is then ready for etching. Taking his already prepared plate, he placed it into the etchant tank containing ferric chloride and allowed the chemical to etch the brass. Al periodically checked the process and re-immersed the brass into the tank. The process resulted in a nicely formed cross tree support when finished. The kit contains all of the materials needed and an instruction book detailing all of the steps to be taken. The chemicals used require protective clothing when handling such as latex gloves, plastic apron and goggles. Your work area must have adequate ventilation as well. Al noted that his initial efforts were less than successful but with more experience, he has been quite pleased with the results, as his work tonight gives proof.

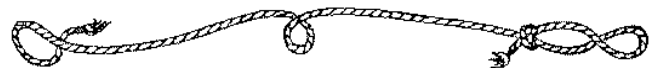
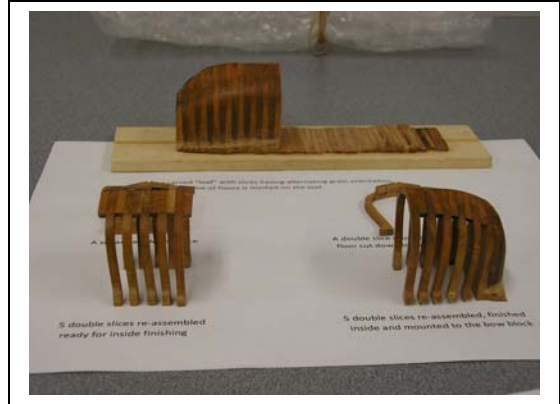
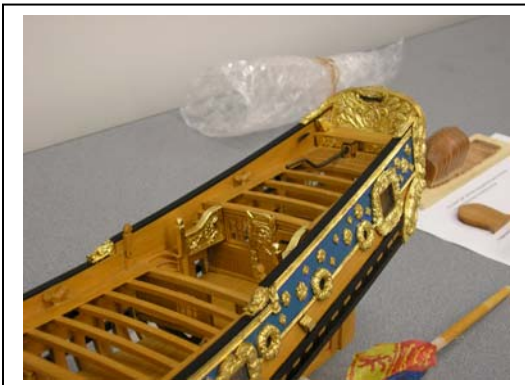
Many of us have probably considered making our own photo-etch parts but have been intimidated by all of the work involved. After tonight's tech session, I think several might be willing to try. Thanks, Al!



## SHOW AND TELL

Although several models were on hand, lack of time prevented us showing them all. Bob Fivehouse asked if the members could bring back their models next month so that we could limit Show and Tell to just one model and one tool.

**Dan Pariser** brought in his model of *Henrietta*, built in 1679. We've seen this model before but Dan is in the process of reworking it and wanted to show us some of the changes he's now incorporating. Dan has gold leafed the ornamentation on the hull and the finish is far superior to using gold paint. He is also remaking his flags and explained that by using Word Art, you can skew the rectangular shape of the flag so that it hangs more realistically. Dan is also working on a smaller scale *Henrietta*, and explained the "loaf of bread" method he is using to construct the individual frames by gluing up 2" x 2" blocks and then carving the hull shape. He can then cut out a section to allow him to sand the interior of the hull shape with a dremel tool and with an additional cut, ends up with individual frames.



## TOOL TIME

**Barry Rudd** showed us the modifications he made to his Preac saw which allows him to set blade height much more easily. He also modified the vertical fence guide. Barry provided details on his modifications which can be found in this issue of the newsletter.

The meeting adjourned at 10:10 PM.

## Upcoming Meeting Topics

**August 25, 2009** – Ernest Connor will show us how to make oars for your models

**September 22, 2009** – Allan Yedlinsky will discuss his technique for hull frame construction

### **MARK YOUR CALENDARS**

**September 2009** - Model display at Ocean County Library, Toms River, NJ

**October 6-11, 2009** – NRG Conference, Buffalo, NY (Registration Form included in this issue)



### **FROM THE EDITOR**

Call it the summer blahs or a lack of content from not having much of a business session or only one model to discuss this month that this issue of the Broadaxe is on the short side. I hope you're all having a good summer so far. It's sure gone fast for me!

*Mike Gutsick*

The '**BROADAXE**' is published monthly by The Ship Model Society of New Jersey, a nonprofit organization dedicated to teaching and promoting ship modeling and maritime history. Membership dues are \$25.00 for the first year and \$20.00 per year thereafter

Visit our Web Site at: <http://www.njshipmodelsociety.org> where a Web version of the **BROADAXE** can be found. The **BROADAXE** is distributed by both US mail and e-mail in PDF format.

Regular meetings are held on the **FOURTH Tuesday** of every month at 7:30 P.M., at the Millburn Free Public Library, 200 Glen Avenue, Millburn, New Jersey.

Guests are always welcome.

Contributions to the **BROADAXE** are always welcome, and SMSNJ members are encouraged to participate. Articles, shop hints and news items may be submitted directly to The Editor as typed manuscript or electronic files, either on discs or by e-mail. Handwritten notes or other materials will be considered depending on the amount of editing and preparation involved.

### **Direct All Correspondence To:**

#### **BROADAXE EDITOR**

Michael Gutsick, 34 Junard Drive, Morristown, NJ 07960  
(973) 206-1004 E-mail: [mikejgutsick@optonline.net](mailto:mikejgutsick@optonline.net)

### **OFFICERS**

#### **PRESIDENT:**

Robert Fivehouse, 53 Ironia Road, Randolph, NJ 07869  
(973) 927-3426 E-mail: [Fivehouse@verizon.net](mailto:Fivehouse@verizon.net)

#### **VICE PRESIDENT:**

Thomas McGowan, 36 Clover Hill Lane, Colts Neck, NJ 07722  
(732) 946-8322 E-mail: [jmcgcla@optimum.net](mailto:jmcgcla@optimum.net)

#### **TREASURER:**

Al Geigel, 453 Second Street, Dunellen, NJ 08812  
(732) 529-5147 E-mail: [algiegel@optonline.net](mailto:algiegel@optonline.net)

#### **SECRETARY:**

Michael Gutsick, 34 Junard Drive, Morristown, NJ 07960  
(973) 206-1004 E-mail: [mikejgutsick@optonline.net](mailto:mikejgutsick@optonline.net)

#### **WEBMASTER:**

Michael Storch E-mail: [mstorch@stro.com](mailto:mstorch@stro.com)

### SHOP HINT FOR PREAC SAW

If you use the Preac saw and also have the vertical fence guide and the stop, this is the small metal block that attaches to the fence to allow repetitive cross cuts, you have to remove one to use the other, because they both use the same screw holes to attach them to the standard fence. This is a pain in the neck to keep switching them. What I did is attach the stop to one side of the standard fence and the vertical fence guide to the other side of the standard fence using the screws. Now all you have to do is rotate the fence on the saw table to use one of the other.

The stop can be attached with either epoxy or double sided tape.

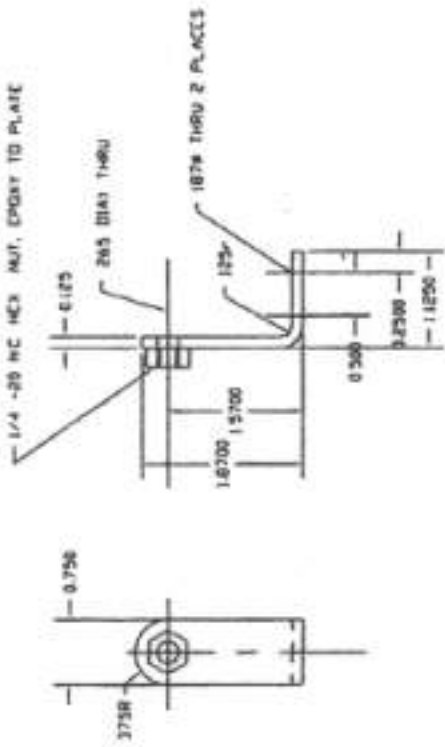
See photo



Barry Rudd  
7/28/09

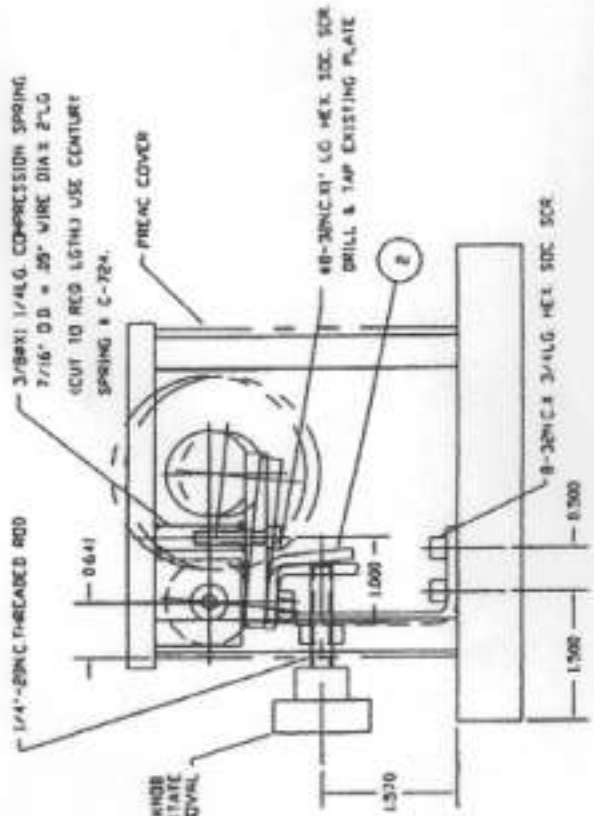
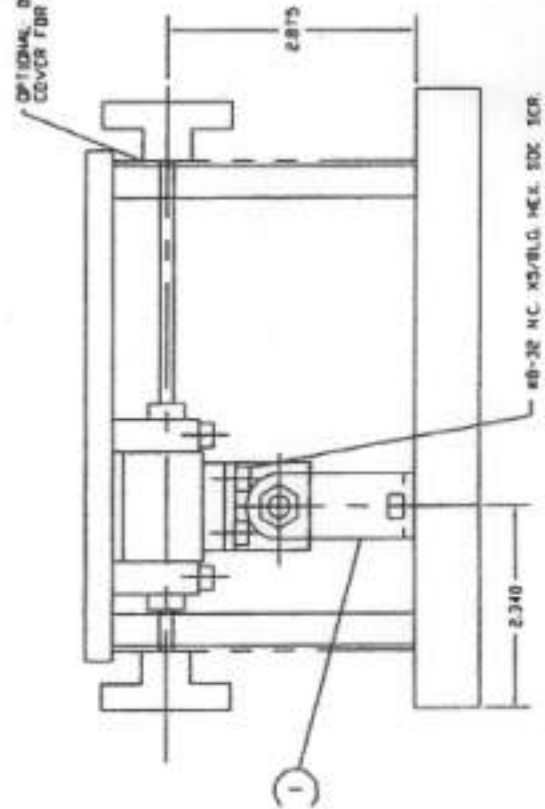
Drawing by Keith Harrison

Design by Charles Green



1 MATERIAL: ALUM PLATE

2 MATERIAL: ALUM PLATE



PREAC SAW MODIFICATION: Blade height adjustment.

A couple of ship modelers, Keith Harrison, who is a member of the Seaways Shipmodeling List and another gentleman named Charles Green came up with a design and drawing of a modification for a height blade adjusting mechanism for the Preac Saw.

It's basically an easy and inexpensive modification. It took me a few hours and about \$10.00 for the aluminum strip and assorted nuts and bolts from the local hardware store to build it.

Barry Rudd

5/26/09

---

# *THE BROADAXE*

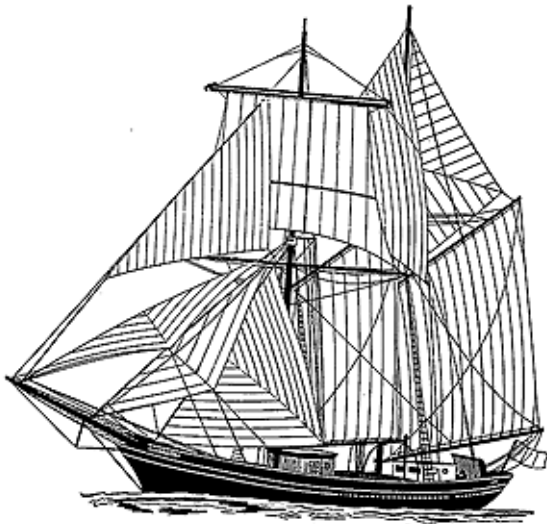
NEWSLETTER  
of  
THE SHIP MODEL SOCIETY OF NEW JERSEY

*Founded in 1981*

Volume 27, Number 8

August 2009

Newsletter Editor:  
Michael Gutsick  
34 Junard Drive  
Morristown, NJ 07960



## **NEXT MEETING:**

**August 25, 2009**

**7:30 PM**

MILLBURN PUBLIC  
LIBRARY

Tech Session

**Making Model Oars**

By

**Ernest Connor**