

# THE BROADAXE

NEWSLETTER  
of  
THE SHIP MODEL SOCIETY OF NEW JERSEY  
*Founded in 1981*



Volume 27, Number 10

October, 2009

## MINUTES OF THE REGULAR MEETING September 22, 2009

The meeting was called to order by President **Bob Fivehouse** at 7:40 PM with 24 members in attendance. We had 1 visitor this evening, **Chuck Passaro**, attending his second meeting.

Comments, questions and or corrections to the September issue of the Broadaxe were requested. There being no corrections, the September 2009 issue of the Broadaxe was accepted into the minutes.

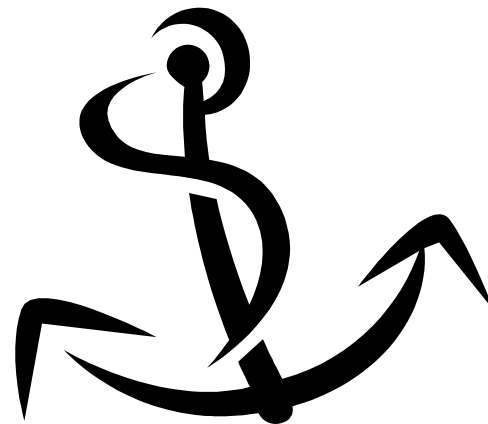
**Al Geigel** presented his Treasurer's Report to the members. There being no discussion or comments on the report, the Treasurer's Report was accepted into the minutes. Al also read a letter he received from the U.S. Merchant Marine Combat Veteran Just Compensation Committee thanking us for our donation in memory of Capt. Earl Young and expressing their condolences to his family.

**Tom McGowan** spoke about the Ocean County Library display and his disappointment that only 5 members provided models for the show. While there are 33 models on display, over half of them are Henry Schaefer's. One of the members present noted that when he called about bringing his and another member's models to the library, he was told that they were not needed as they had enough. **Steve Maggipinto** then said that he brought his model of a Sub Chaser to the library on the second drop off date and was well received by the library staff. The librarian also told him it was one of the best exhibits they have had at

the library. **Henry Schaefer** told us that he made two large signs, one for the vestibule and one on the second floor to direct visitors to the display. The members were also reminded that the models must be picked up from the library on October 31<sup>st</sup>.

**Ed Hegstetter** suggested that we should have some uniform information available to accompany each model. Ed was reminded that a suggested format had been available at the last meeting (as well as e-mailed to members before the display opened) which very few members bothered to take. **Steve Maggipinto** then volunteered to create a standard information sheet for our models and would begin with this evening's Show & Tell Forms as the base.

**Roy Goroski** inquired about the previously discussed trip to Annapolis that was supposed to occur this October. Considering that several members will be attending the NRG Conference in Buffalo at the beginning of October and, per Tom Ruggiero, not all exhibit halls are currently open, it was decided to defer the trip to Annapolis until April 2010.





## TECH SESSION

Business commitments prevented Allan Yedlinski from presenting his talk about his method of constructing ships frames. To fill the gap, Vice-president **Tom McGowan** brought in his Sherline lathe and gave an informative demonstration on its use. Tom's lathe is a long bed model and is quite light compared to similar metal working bench top lathes which can weigh 90 lbs or more. The Sherline is not an inexpensive tool, however, being priced at almost \$700 which excludes many accessories needed for detail work. Thanks for bringing in your lathe, Tom. We enjoyed seeing this precision instrument up close.



## SHOW AND TELL

**Henry Schaefer** seems to have a never ending supply of paper ship model kits that he uses as a base to construct his wood model. This evening, he brought in his current project, the German Guidance Vessel *TOGO*, named in honor of Japanese Admiral Togo who defeated the Russian Navy at the battle of Tsushima in May 1905. The *Togo* was built in 1938 and was used to guide fighters in night combat between 1943 and 1945. Henry is currently working on the hull which is of solid sugar pine. The hull is shaped by using the paper forms in the kit to create station templates.

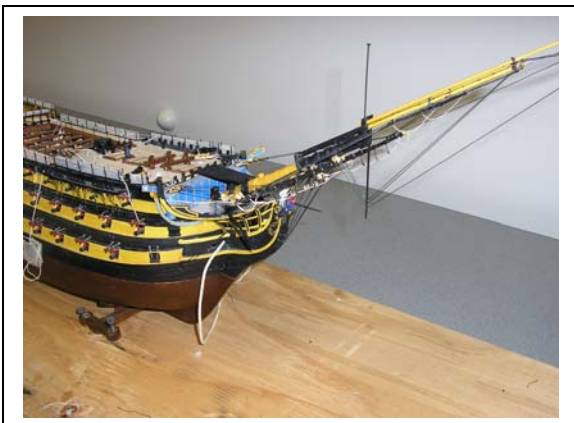


**Don Otis** is currently working on HMS *FLY*, the first in a series of Swan class ship rigged sloops. Don will rename the model as HMS *Swan*, the first in the series of 15 that were constructed. Don is making the model for his eldest daughter, an ardent admirer of the ballet, hence the name Swan. This is an Amati kit in their Victory Model series and in Don's opinion is a magnificent kit with respect to quality of materials. The model is double plank on bulkhead construction, the second layer being of walnut. The scale is 1:62.



**Daniel Caramagno** is working on a plastic kit model of HMS *Victory* as she appeared in 1805. The model is in 1:100 scale. Dan is making numerous modifications to the model having replaced the plastic gratings with wood gratings, planking the decks with wood strips and carving an entry way into the hull. The cannon balls are made of mustard seeds and

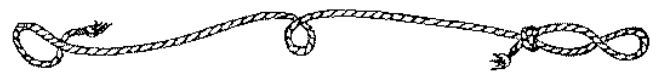
Dan is also using a ropewalk to fabricate his own scale rigging. Dan is making considerable use Longridges's "Anatomy of Nelson's Ships" and Lever's "Young Sea Officers Sheet Anchor" to enhance the model.



The meeting adjourned at 9:50 PM.

**MARK YOUR CALENDARS**

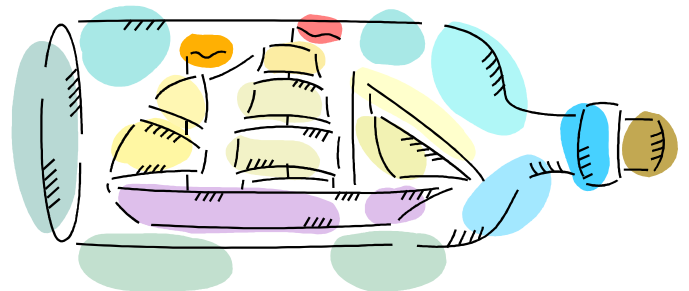
**October 31, 2009 – Models on display at Ocean County Library, Toms River, NJ must be picked up!**



### FROM THE EDITOR

The October meeting is one of our two "Bring a Model" nights. Over the past few months there has been a drop off in the number of models that are brought in for Show & Tell. Part of it goes along with the drop off in attendance during the summer months and part of it might be due to lengthy tech sessions that have left little or no time for members to talk about the models they have brought in, which can be discouraging. October 27<sup>th</sup> is for the models, which is what this organization is all about. Let's fill those tables with your handiwork!

*Mike Gutschick*





# SPECIAL ANNOUNCEMENT!

We have all been anxiously awaiting **Ollie Eriksen's** second book. We don't have to wait any longer! Ollie's new book about the USS *Constitution* All Sails Up and Flying is now available. It is in an oversized, coffee table format and Ollie will be at the October 27<sup>th</sup> meeting to discuss his new book and will have copies available for purchase. The book will retail for \$120 but can be purchased from Ollie at the meeting for \$75. Come and meet the author!



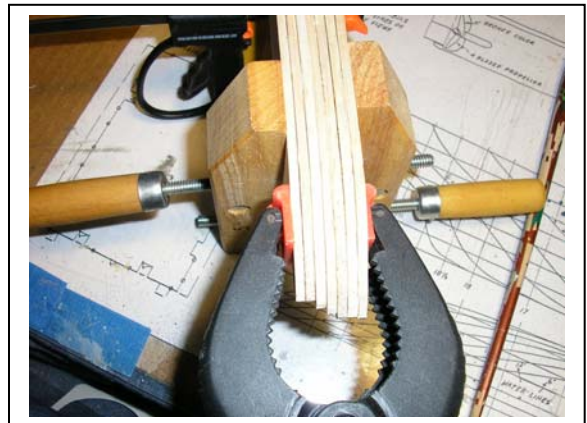
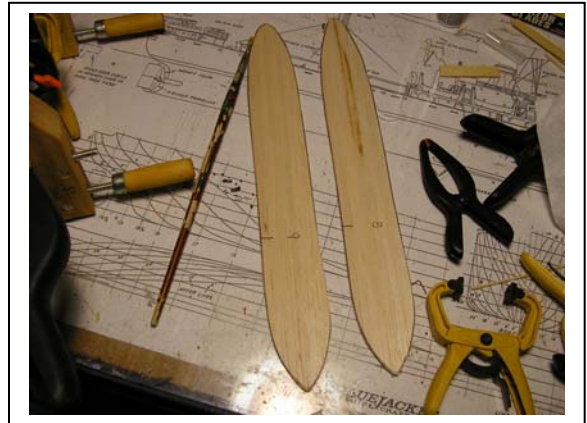
## A REMINDER!

We still have a fair number of members who have not paid their dues yet for the current year. Dues must be paid by December 31<sup>st</sup> in order to remain a regular member. Please see Al Geigel at the meeting or mail your dues payment to him at your earliest convenience. The annual dues are \$20.

## And a rambling thought

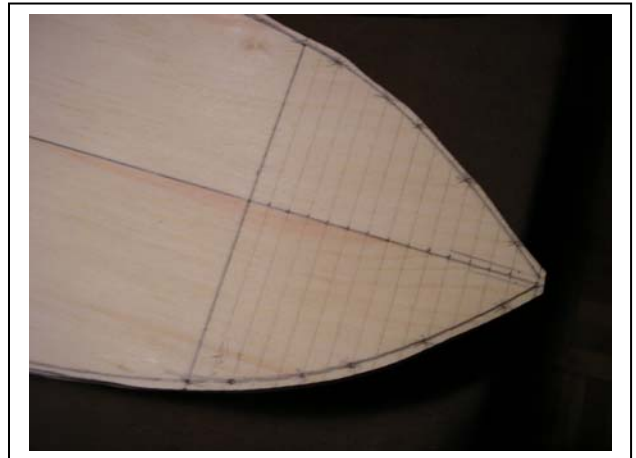
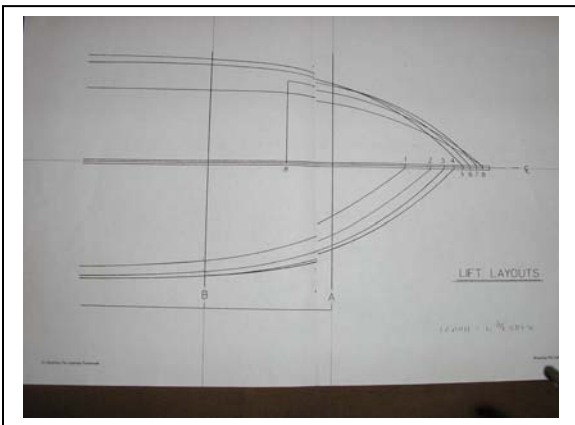
We've seen some nice models at the meetings and have been shown several methods of hull construction including plank on frame/bulkhead or solid machine carved hulls found in kits and built up layers many have used in scratch built models. The layered approach, also known as bread and butter or the lift method, is one I find myself using on two models I'm currently working on. One is a kit and one I am scratch building. I find it an interesting construction method and one that we rarely see at

a meeting in its very early stages. In my case, the two models illustrate two ways to obtain the waterline templates to construct your layers. If you have plans with full line drawings, the plan view will give you your waterline templates. Neither of my models came with full line drawings. In the liberty ship kit model, this didn't matter since the waterline outlines were printed on the balsa sheets. Each layer was easily cut out with an Exacto knife and then glued up. In this case, final hull shaping was done by eye as no body section templates were provided.



What's that you see underneath the model? Why, it's the lines for the *Jeremiah O'Brien*! A Type A modeler would undoubtedly have redrawn or reduced the plan to the correct scale to obtain body templates for 100% accuracy. That ain't me! I bought the kit while taking a cruise on the *John W. Brown*. It's a balsa kit that takes great liberties in scale and deck layout and I don't feel a particular need to make drastic changes to the kit to make it more "historically accurate". On the other hand, the second bread and butter model I started will be a

different story. It is a 1:48 scale model of the Lightship WAL 524 currently on permanent display in Portsmouth, VA. At this scale, the model cries out for detail. While in Oregon a couple of years ago, I went to the Columbia River Maritime Museum. The retired lightship *Columbia* is docked next to the museum and is open to the public. While in the museum store, I picked up a book "Modeling the Portsmouth" as it seemed an interesting model. As with the liberty ship kit, the plans in the book do not include full line drawings but they do include body station templates and partial waterline plans for the 8 boards that make up the hull. The waterlines were drawn to correspond with standard 1 x 8 lumber. I started to lay out the full length waterlines on heavy brown contractor's paper but finally decided to lay out the waterlines directly on each plank. I used dividers to transfer the intersection points of each waterline to the plank and used a flexible rule to "loft" the line. I added additional station lines at the bow and stern to get a more accurate shape of the line. Each plank was then cut out on my band saw. The layers are now ready for gluing up. I will be heading to Portsmouth to take many close up photos of the actual ship so that the model will be as close to the original as possible. Two models, two different attitudes toward construction but I'm enjoying each one. These are but two specific methods of constructing a bread and butter hull. If any of the members wish to share another method they have used, send me the information and I'll be glad to include it in a future issue.



## A Quick Shop Tip courtesy of Ed Hegstetter

Ed provided me with many modeling tips from past issues of FineScale Modeler. Having recently discarded a number of CD's at work, I wish I saw it sooner!



The '**BROADAXE**' is published monthly by The Ship Model Society of New Jersey, a nonprofit organization dedicated to teaching and promoting ship modeling and maritime history. Membership dues are \$25.00 for the first year and \$20.00 per year thereafter

Visit our Web Site at: <http://www.njshipmodelsociety.org> where a Web version of the **BROADAXE** can be found. The **BROADAXE** is distributed by both US mail and e-mail in PDF format.

Regular meetings are held on the **FOURTH Tuesday** of every month at 7:30 P.M., at the Millburn Free Public Library, 200 Glen Avenue, Millburn, New Jersey.

Guests are always welcome.

Contributions to the **BROADAXE** are always welcome, and SMSNJ members are encouraged to participate. Articles, shop hints and news items may be submitted directly to The Editor as typed manuscript or electronic

files, either on discs or by e-mail. Handwritten notes or other materials will be considered depending on the amount of editing and preparation involved.

### Direct All Correspondence To:

#### **BROADAXE EDITOR**

Michael Gutsick, 34 Junard Drive, Morristown, NJ 07960  
(973) 206-1004 E-mail: [mikegutsick@optonline.net](mailto:mikegutsick@optonline.net)

### **OFFICERS**

#### **PRESIDENT:**

Robert Fivehouse, 53 Ironia Road, Randolph, NJ 07869  
(973) 927-3426 E-mail: [Fivehouse@verizon.net](mailto:Fivehouse@verizon.net)

#### **VICE PRESIDENT:**

Thomas McGowan, 36 Clover Hill Lane, Colts Neck, NJ 07722  
(732) 946-8322 E-mail: [jmcgcla@optimum.net](mailto:jmcgcla@optimum.net)

#### **TREASURER:**

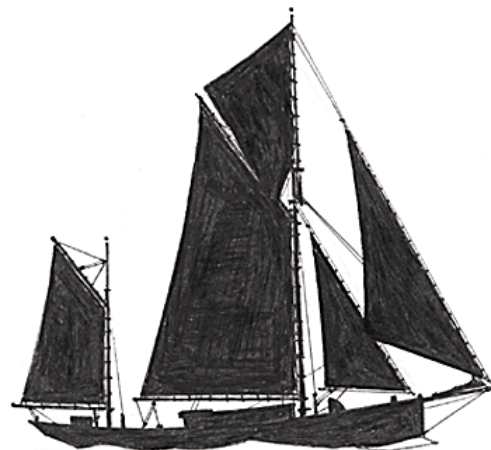
Al Geigel, 453 Second Street, Dunellen, NJ 08812  
(732) 529-5147 E-mail: [algiegel@optonline.net](mailto:algiegel@optonline.net)

#### **SECRETARY:**

Michael Gutsick, 34 Junard Drive, Morristown, NJ 07960  
(973) 206-1004 E-mail: [mikegutsick@optonline.net](mailto:mikegutsick@optonline.net)

#### **WEBMASTER:**

Michael Storch E-mail: [mstorch@stro.com](mailto:mstorch@stro.com)



*Can you identify this vessel type? The answer is on the cover.*

---

# *THE BROADAXE*

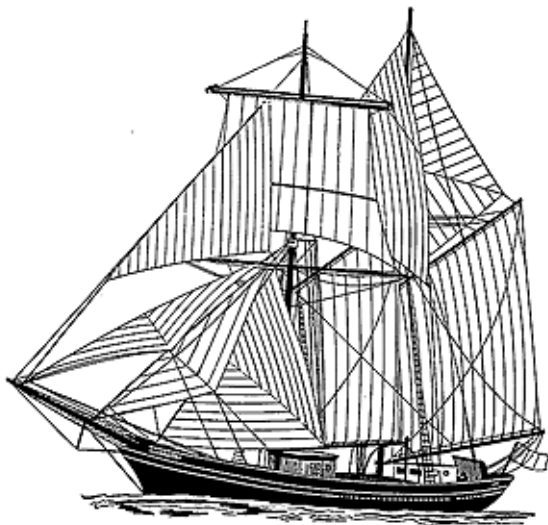
NEWSLETTER  
of  
THE SHIP MODEL SOCIETY OF NEW JERSEY

*Founded in 1981*

Volume 27, Number 10

October 2009

Newsletter Editor:  
Michael Gutsick  
34 Junard Drive  
Morristown, NJ 07960



It's a Ketch

## **NEXT MEETING:**

**October 27, 2009**

**7:30 PM**

MILLBURN PUBLIC  
LIBRARY

Tech Session

**BRING A MODEL  
NIGHT**