

THE BROADAXE

NEWSLETTER
of
THE SHIP MODEL SOCIETY OF NORTHERN NEW JERSEY
Founded in 1981



Volume 25, Number 5

May, 2007

MINUTES OF THE REGULAR MEETING April 24, 2007

The meeting was called to order by President **Jeff Fuglestad** at 7:40 PM with 30 members in attendance. We had 2 guests, **Bill Weller** from Gillette and **Tom Alcock** from Chester. Also joining us was **John Marinovich**, a former member who has decided to renew his membership to the Club. A hearty welcome was given to all!

Treasurer **Ken Schuetz** presented his Treasurer's Report which was accepted by the members present. He mentioned that 14 members were still in arrears on their dues. **Jeff Fuglestad** commented that he had called several of the individuals. A brief discussion ensued whereupon it was decided that those members still in arrears would be dropped from the membership rolls.

Ken Schuetz asked if the members would approve the purchase of a small footlocker to be used for storing the Club's banner and other items belonging to the Club. It would be kept at the Library in the back room where we currently keep the refreshment supplies. After a brief discussion, a motion was made and seconded to purchase a suitable locker in an amount not to exceed \$100.

The Annapolis trip was then discussed. Six members will be making the trip to the Naval Academy on May 12th. Drivers for the car pool were confirmed and Jeff Fuglestad indicated that he will coordinate the logistics for the car pools with the attendees.

A request for a show of hands was made of those members who were going to the North East Joint Conference show in New London the following Saturday, April 28th. Over a dozen members indicated that they will be attending.

Jeff Fuglestad brought up the proposed name change for the organization again. A significant majority of members in attendance were in favor of the proposed name change to **The Ship Model Society of New Jersey**. **Bob Fivehouse** was directed to prepare a draft of an Amendment to the Constitution of the Club to be discussed and printed in the Broadaxe prior to a final vote to adopt the name change.

John Marinovich addressed the members on behalf of the family of **Henry Barbrack**, a respected and admired member of many years. Henry's grandson inherited his house and contents and would like to donate Henry's lathe and tools to the Club. The members were in agreement that we should pick up Henry's items and arrange for an auction to benefit the Club and asked John to notify Henry's family of our intentions.

Barry Rudd will have an open house of his workshop on Saturday, May 26th from 10 AM to Noon. Directions to his house are included in this issue of the Broadaxe.

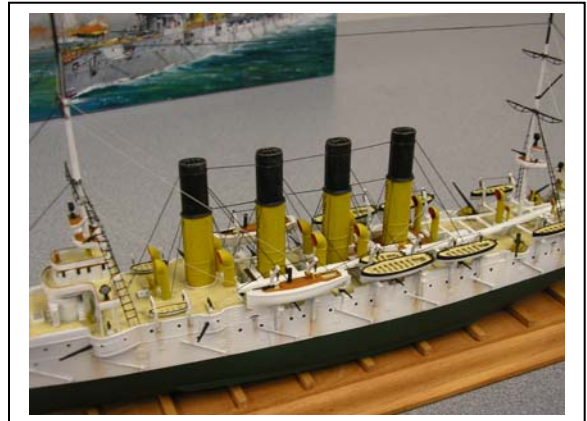


SHOW & TELL

Our guest **Bill Weller** brought in an interesting small boat his neighbor had in his attic. Bill was hoping some of the members could shed some light on the model. He thought it might be a pond model as its cabin is removable and it appeared that blocking for a motor had been put into the hull. Jeff Fuglestad offered that it appeared to be a 1920's lake boat, was home made and was well worth restoring, taking care to retain the aging of the finish on the deck.



Len Schwalm brought in a plastic kit model he is building for someone else. The kit was made in Russia. The model is of the *Varyag*, built in 1899 by a US shipbuilder and sold to the Russian Navy in 1901. The ship was scuttled by her crew in 1904 during a battle with the Japanese. The model is in 1:350 scale and nicely detailed. Len used some photo-etched brass for the railings and inclined ladders. The rigging is stretched sprue except for one piece of cord running from the bow to the stern.



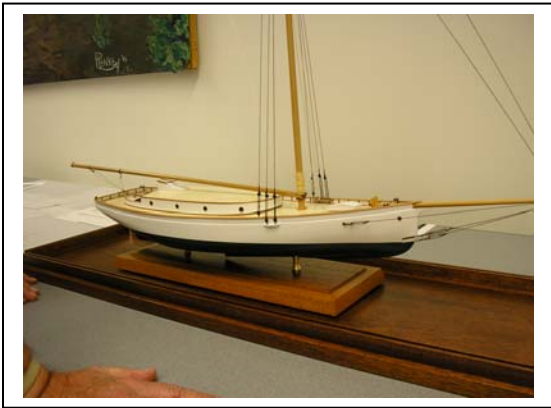
Joe Cilino had on hand a model he had brought in some time ago. The vessel is purported to be a New York harbor steam paddlewheel tug. The model is a kit model by ARKit, a European company. It is in 1:70 scale of plank on frame construction. It has proven to be an extreme challenge to build due to the poor quality of the materials and incorrect dimensions in the plans. Some interesting discussion took place regarding the tug's heritage as a New York harbor tug. It's stem has a distinctly Mediterranean sweep and a couple of members who have done extensive research on New York harbor vessels have never seen a photo or painting of any vessels comparable to this model. While its lineage may be in question, Joe has done a fine job in making the best of a horrible kit.



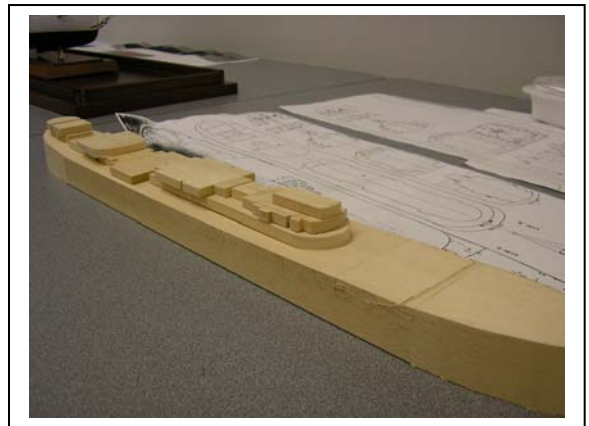
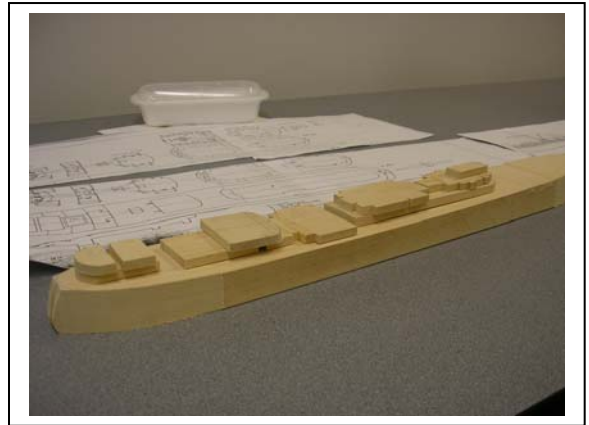
Tony Alworth showed us his model of the yacht *America* which he built in 1976. It's a Sterling Model kit in 3/8" = 1' scale making it 36" in length. The kit was for a pond model having a very deep keel with a lead weight to be attached for ballast. The hull is plank on bulkhead. *America* was built by Wm. H. Brown, NYC for a syndicate of NY Yacht Club members for a price of \$30,000 but Brown had to guarantee that it would beat any challenger in a race. Tony decided to make some changes to the model to make it more correct using John Rousmanhere's book "The Low Black Schooner".



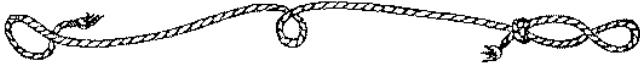
Jeff Fuglestad showed us his scratch built model of the yacht *Mallory* built in 1858. The model is in $3/8" = 1'$ scale using solid bread and butter construction. Jeff created his own plans using a painting of the *Mallory* he found in Mystic, CT, a Currier & Ives print and a photo of the half model of the yacht owned by the New York Yacht Club. Jeff couldn't take off measurements from the half model so he had to estimate measurements based on dimensions of the yacht included on the Currier & Ives print and relative measurements of known dimensions to the print and painting. Where there's a will, there's a way!



Bob Fivehouse's current project (actually it's one of 5 models Bob is currently working on!) is a scratch built model of *Cape Town Castle* built in 1938 for the Union Castle Line for the Southampton to Cape Town, South Africa run. At 734' in length, it was the longest motor ship afloat when it was built. The ship was retired in 1967. It's a solid basswood hull in two parts which provides Bob with a natural centerline as he carves the hull and positions the deck structures and fittings. The scale is $1" = 32'$, Bob's favorite scale for his models.



The meeting adjourned at 9:50 PM.



“Soundings From D-Deck”

For those of you who would like to see Barry Rudd’s workshop, here are the direction Barry provided:

From the Garden State Parkway – from the South – Take Exit 157 onto Route 20 North. Go about 3 ½ miles to Fair Lawn Ave Bridge. Turn right across the bridge onto Fair Lawn Ave. Go about 1 ½ miles to Well Drive. Turn left onto Well Drive. Barry’s house is the 2nd house on the 2nd block on the left.

From NJ Turnpike and Route 80 West – Take the Turnpike to Route 80. Take I80 to Route 17 North, then to Route 4 West. Follow Route 4 to Route 208 (about 2 miles). Go about a mile to the first Fair Lawn Ave exit. At the top of the ramp, turn right. You will be on Fair Lawn Ave going East. Go 1 mile to Well Drive and turn left onto Well Drive.

From Route 80 East – Take Rte 80 to the Route 20 exit in Paterson. Take Route 20 North for about 2 ½ miles to the Fair Lawn Ave Bridge. Then follow directions “**From Garden State Parkway**”

Barry’s address and phone number is:
1600 Well Drive, Fair Lawn, NJ
Home 201-791-1431 and Cell 201-280- 6353

FOR SALE:

In addition to opening up his workshop for us, Barry has a Craftsman 9" band saw with a 1/3 HP motor including a 1/4" saw blade, miter guide and rip fence for sale. Barry is asking \$60.00 with 10% of the proceeds going to the club. If you are interested, contact Barry Rudd. Tel: 201-791-1431 or email: Metrolimo@aol.com.



Over the years we have developed sources for tools and supplies we rely on. Many of them are often mentioned during Show & Tell but then fade from memory. It would be nice to have a booklet available to the members containing these various sources. **Joe Cilino** has volunteered to collate these sources into a booklet for our use. I would like all of the members to provide Joe with a list of your favorite sources so that he can begin this project. You should also indicate the type of category the supplier is in such as jewelry supplier, woodworking, etc. All of us will benefit from this source guide so please take the time to provide your feedback to Joe. You can e-mail your information to him at joe.cilino.verizon.net or give it him or one of the officers at any meeting.

We received an e-mail from Bob Eberlein, a member of the *Nitro* Association, made up of former crewmen of the US Navy Ammunition Ship *USS Nitro, AE-23*. Bob is looking to have a model of their ship made at some point in the future. If anyone might be interested in making a model of this Auxiliary ship for the Association, please contact Bob via e-mail at EBB23@aol.com



**JUST A REMINDER OF
UPCOMING EVENTS**

- May 26, 2007** – Work shop open house hosted by Barry Rudd
- June 10, 2007** – Philadelphia Ship Model Society RC Model Regatta
- June 29 – July 1, 2007** – The 16th Annual WoodenBoat Show at Mystic Seaport
- August 4 & 5, 2007** - South Street Seaport Museum Model Boat Festival
- September 9-13, 2007** - NRG Conference, Wisconsin Maritime Museum, Manitowoc, WI

UPCOMING TECH SESSIONS

- May 22, 2007** - **Mike Gutsick** will demonstrate his technique for forming styrene lifeboats in 1:600 scale using wood forms and a tea-light candle as a heat source
- June 26, 2007** – **Larry Friedlander** will be demonstrating his method of making treenails for his ship models

The '**BROADAXE**' is published monthly by The Ship Model Society of Northern New Jersey, a nonprofit organization dedicated to teaching and promoting ship modeling and maritime history. Membership dues are \$30.00 for the first year and \$25.00 per year thereafter

Visit our Web Site at:

<http://www.njshipmodelsociety.org> where a Web version of the **BROADAXE** can be found. The **BROADAXE** is distributed by both US mail and e-mail in PDF format.

Regular meetings are held on the fourth Tuesday of every month at 7:30 P.M, at the Millburn Free Public Library, 200 Glen Avenue, Millburn, New Jersey.

Guests are always welcome.

Contributions to the **BROADAXE** are always welcome, and SMSNNJ members are encouraged to participate. Articles, shop hints and news items may be submitted directly to The Editor as typed manuscript or electronic files, either on discs or by e-mail. Handwritten notes or other materials will be considered depending on the amount of editing and preparation involved

Direct All Correspondence To:

BROADAXE EDITOR

Michael Gutsick, 34 Junard Drive, Morristown, NJ 07960
(973) 734-1648 E-mail: mikejgutsick@optonline.net

OFFICERS

PRESIDENT:

Jeffrey Fuglestad, 73 Rensselaer Road, Essex Fells, NJ 07021
(973) 228-3230 E-mail: boatworks1@worldnet.att.net

VICE PRESIDENT:

Edward Hegstetter, 79 Cyprus Point Lane, Jackson, NJ 08527
(732) 928-1140 E-mail: jeheg14@optonline.net

TREASURER:

Ken Schuetz, 34 Oak Drive, Roseland, NJ 07068
(973) 226-9004 E-mail: knschuetz@verizon.net

SECRETARY:

Michael Gutsick, 34 Junard Drive, Morristown, NJ 07960
(973) 734-1648 E-mail: mikejgutsick@optonline.net

WEBMASTER:

Al Geigel E-mail: algeigel@optonline.net

THE BROADAXE

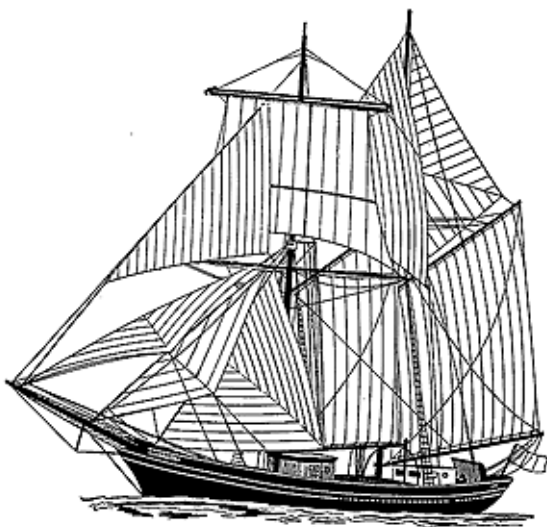
NEWSLETTER
of
THE SHIP MODEL SOCIETY OF NORTHERN NEW JERSEY

Founded in 1981

Volume 25 Number 5

May 2007

Newsletter Editor:
Michael Gutsick
34 Junard Drive
Morristown, NJ 07960



NEXT MEETING:

May 22, 2007

7:30 PM

**MILLBURN PUBLIC
LIBRARY**

**Forming 1:600 Scale
Lifeboats in Styrene**
Presented By
Mike Gutsick